

A sober profile, decided lines and great dimensional modularity are the characteristics that make Sax a unique and contemporary product. The range includes both vertical and horizontal models and versions with a single or double row. The latter is ideal for environments that require a high heating performance.



Sax Verticale, 20 elements, Hight 2000 mm, Lenght 800 mm, Bluish Lilac - RAL 4005

Construction features

manifolds with a 30 mm diameter circular section
tubes made of sheet steel with a 20x25 mm rectangular section
manifold threading 1/2" Gas right
maximum working pressure 4 bar
maximum working temperature 95°C

Standard equipment

wall fixing systems with screws and anchors
1/2" blind plug with piper cover kit
1/2" air vent

Certifications



Plus



Technical data

Model	Depth (mm)	Height (mm)	Conn. C. (mm)	Weight (kg)	Capacity (lt)	$\Delta t=50^{\circ}\text{C}$ (btu/h)	$\Delta t=50^{\circ}\text{C}$ (kcal/h)	$\Delta t=50^{\circ}\text{C}$ (Watt)	$\Delta t=40^{\circ}\text{C}$ (Watt)	$\Delta t=30^{\circ}\text{C}$ (Watt)	$\Delta t=20^{\circ}\text{C}$ (Watt)	Exponent
500	55,0	500	470	0,47	0,24	93,1	23,5	27,3	20,7	14,5	8,8	1,233
530	55,0	530	500	0,49	0,25	97,9	24,7	28,7	21,8	15,3	9,2	1,234
630	55,0	630	600	0,56	0,29	113,4	28,6	33,2	25,2	17,6	10,7	1,240
650	55,0	650	620	0,57	0,30	116,5	29,4	34,1	25,9	18,1	11,0	1,241
680	55,0	680	650	0,59	0,32	121,1	30,5	35,5	26,9	18,8	11,4	1,242
730	55,0	730	700	0,63	0,34	128,8	32,5	37,8	28,6	20,0	12,1	1,245
830	55,0	830	800	0,70	0,38	144,1	36,3	42,2	32,0	22,3	13,4	1,250
850	55,0	850	820	0,71	0,38	147,2	37,1	43,1	32,6	22,8	13,7	1,251
900	55,0	900	870	0,75	0,40	154,8	39,0	45,4	34,3	23,9	14,4	1,254
1200	55,0	1200	1170	0,96	0,53	200,5	50,5	58,8	44,3	30,8	18,4	1,266
1500	55,0	1500	1470	1,17	0,65	246,7	62,2	72,3	54,4	37,7	22,5	1,273
1800	55,0	1800	1770	1,38	0,77	293,8	74,0	86,1	64,8	44,9	26,7	1,276
2000	55,0	2000	1970	1,52	0,85	325,9	82,1	95,5	71,9	49,8	29,7	1,275

Thanks to the high performance of Irsap Sax Vertical radiators, the ideal Δt for low temperature projects is Δt at 30°C .

For Δt different from 50°C use the formula: $Q=Q_n (\Delta t / 50)^n$

Standard equipment

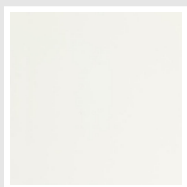
- wall fixing systems with screws and anchors
- 1/2" blind plug with piper cover kit
- 1/2" air vent

Data Set

Length (mm) sub>	NÂ° Elements	Watt =	500	530	630	650	680	730	830	850	900	1200	1500	1800	2000
160	4	Watt =	109	115	133	137	142	151	169	173	181	235	289	344	382
240	6	Watt =	164	172	199	205	213	226	253	259	272	353	434	517	573
320	8	Watt =	218	229	266	273	284	302	338	345	363	470	578	689	764
400	10	Watt =	273	287	332	342	355	378	422	431	454	588	723	861	955
480	12	Watt =	327	344	399	410	426	453	507	518	544	705	868	1033	1146
560	14	Watt =	382	402	465	478	497	528	591	604	635	823	1012	1206	1337
640	16	Watt =	437	459	532	546	568	604	676	690	726	940	1157	1378	1528
720	18	Watt =	491	516	598	615	639	680	760	776	817	1058	1302	1550	1719
800	20	Watt =	546	574	665	683	710	755	845	863	907	1175	1446	1722	1910
880	22	Watt =	600	631	731	751	781	830	929	949	998	1293	1591	1894	2101
960	24	Watt =	655	688	798	820	852	906	1014	1035	1089	1410	1735	2067	2292
1040	26	Watt =	710	746	864	888	923	982	1098	1121	1180	1528	1880	2239	2483
1120	28	Watt =	764	803	931	956	994	1057	1183	1208	1270	1646	2025	2411	2674
1200	30	Watt =	819	860	997	1024	1065	1132	1267	1294	1361	1763	2169	2583	2865
1280	32	Watt =	873	918	1064	1093	1136	1208	1352	1380	1452	1881	2314	2756	3056
1360	34	Watt =	928	975	1130	1161	1207	1284	1436	1466	1543	1998	2459	2928	3247
1440	36	Watt =	982	1032	1197	1229	1278	1359	1521	1553	1633	2116	2603	3100	
1520	38	Watt =	1037	1090	1263	1298	1349	1434	1605	1639	1724	2233	2748	3272	
1600	40	Watt =	1092	1147	1330	1366	1420	1510	1690	1725	1815	2351	2892		

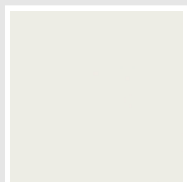
Colors and Finishes

STANDARD

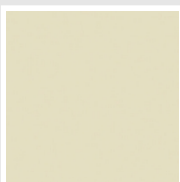


Bianco Standard
Cod. 01

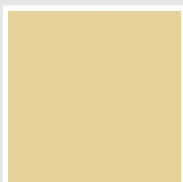
CLASSIC



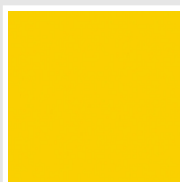
Bianco Edelweiss
Cod. 34



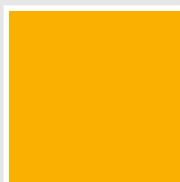
Avorio - RAL 1013
Cod. 02



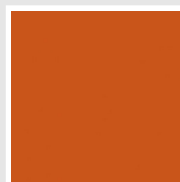
Beige Cream
Cod. 26



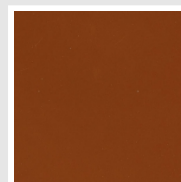
Giallo - RAL 1021
Cod. 04



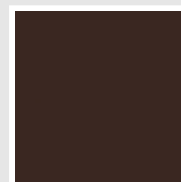
Giallo Melone - RAL
1028
Cod. E7



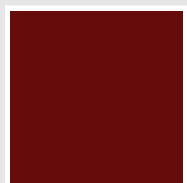
Arancio - RAL 2004
Cod. 17



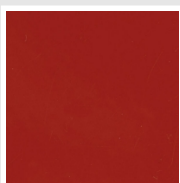
Marrone Ruggine -
RAL 8004
Cod. E1



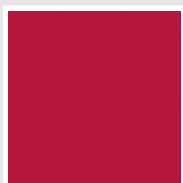
Marrone - RAL 8017
Cod. 09



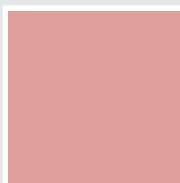
Amaranto - RAL 3003
Cod. 06



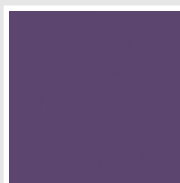
Rosso - RAL 3000
Cod. 05



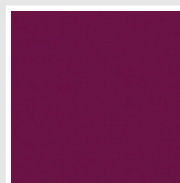
Rosso Fragola - RAL
3018
Cod. Y3



Rosa - RAL 3015
Cod. R2



Lilla Bluastro - RAL
4005
Cod. R3



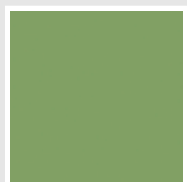
Porpora Traffico -
RAL 4006
Cod. R6



Verde Bosco - RAL
6005
Cod. 19



Verde Erba - RAL
6018
Cod. N3



Verde Salvia - RAL
6021
Cod. E6



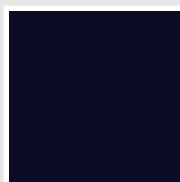
Blu Pastello - RAL
5024
Cod. G7



Grigio Manhattan
Cod. 03

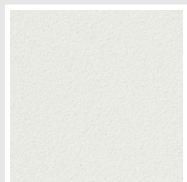


Nero - RAL 9005
Cod. 10

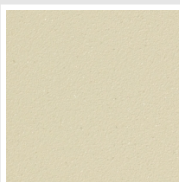


Deep Blue
Cod. 2F

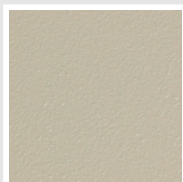
SPECIAL



Bianco Perla
Cod. 16



Quartz 1
Cod. 1C



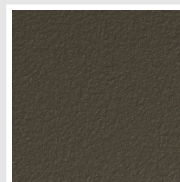
Sablé
Cod. Y4



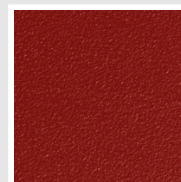
Quartz 2
Cod. 2C



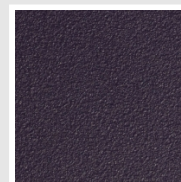
Sunstone
Cod. 2D



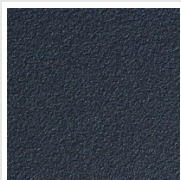
Bruno Tabacco
Cod. 1B



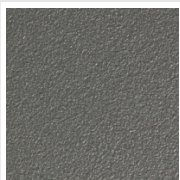
Flame Red
Cod. 7D



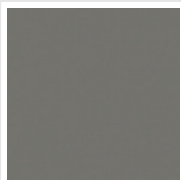
Purple Blue
Cod. 1D



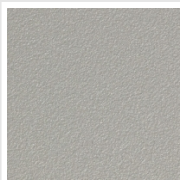
Azurite 3
Cod. 6C



Grigio Medio
Cod. 4D



Grigio Titanio
Metallizzato - RAL
9023
Cod. L3



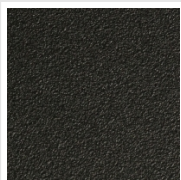
Grigio Perla
Cod. L6



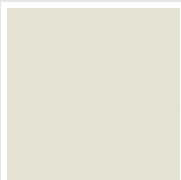
Nero Grafite
Cod. 18



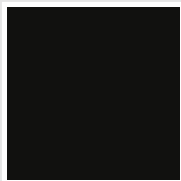
Grigio Quarzo
Cod. 31



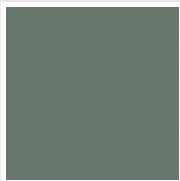
Nero Satinato
Cod. 30



Bianco Opaco
Cod. J8



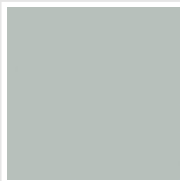
Nero Opaco
Cod. K1



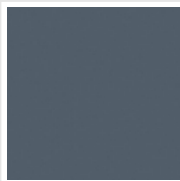
Agave
Cod. 9N



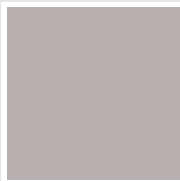
Blu Baltico
Cod. 1P



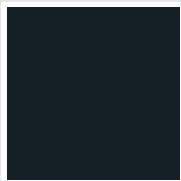
Ghiaccio
Cod. 3P



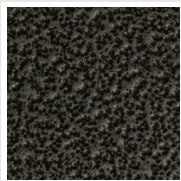
Blu Colomba Opaco
Cod. 4P



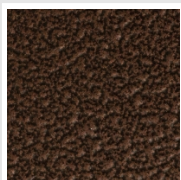
Grigio Chiaro Opaco
Cod. 8N



Grigio Cenere - Ral
7021
Cod. G1



Grigio Martellato
Cod. 32



Rame Martellato
Cod. J4

RAL



Other RAL Colours (following feasibility study)
Cod. ALTRIRAL

The Colors used in this folder are not considered binding. The different technological painting processes and the materials used for the realization can not have a perfect color match with the delivered product. Irsap company reserves the right to introduce at any time whatever modifications necessary to the improvement of the product.