

Horizontal Sax is ideal for settings with refined and original architectural lines, where the shape of the radiator enhances the environment, giving it a personal touch.



Sax Orizzontale, 14 elements, Hight 560 mm, Lenght 1800 mm, Tobacco Brown

Construction features

- manifolds with a 30 mm diameter circular section
- tubes made of sheet steel with a 20x25 mm rectangular section
- manifold threading 1/2" Gas right
- maximum working pressure 4 bar
- maximum working temperature 95°C

Standard equipment

- wall fixing systems with screws and anchors
- 1/2" blind plug with piper cover kit
- 1/2" air vent

Certifications



Plus



Technical data

Model	Depth (mm)	Length (mm)	Conn. C. (mm)	Weight (kg)	Capacity (lt)
500	55,0	500	470	0,47	0,24
530	55,0	530	500	0,49	0,25
630	55,0	630	600	0,56	0,29
650	55,0	650	620	0,57	0,30
680	55,0	680	650	0,59	0,32
730	55,0	730	700	0,63	0,34
830	55,0	830	800	0,70	0,38
850	55,0	850	820	0,71	0,38
900	55,0	900	870	0,75	0,40
1200	55,0	1200	1170	0,96	0,53
1500	55,0	1500	1470	1,17	0,65
1800	55,0	1800	1770	1,38	0,77
2000	55,0	2000	1970	1,52	0,85

Thanks to the high performance of Irsap Sax Horizontal radiators, the ideal Δt for low temperature projects is Δt at 30°C.

For Δt different from 50°C use the formula: $Q=Q_n (\Delta t / 50)^n$

Standard equipment

- wall fixing systems with screws and anchors
- 1/2" blind plug with piper cover kit
- 1/2" air vent

Number elements	4	6	8	10	12	14	16	18	20	22	24	26	28	30	32	34	36	38	40
Btu/h a $\Delta t=50^\circ\text{C}$	710,8	1.067,9	1.420,6	1.767,1	2.107,8	2.441,7	2.768,8	3.088,6	3.401,7	3.707,9	4.007,0	4.298,9	4.584,3	4.862,6	5.134,0	5.398,6	5.656,7	5.907,9	6.152,7
Thermal Power linear mt. Watt a $\Delta t=50^\circ\text{C}$	208,2	312,8	416,1	517,6	617,4	715,2	811,0	904,7	996,4	1.086,1	1.173,7	1.259,2	1.342,8	1.424,3	1.503,8	1.581,3	1.656,9	1.730,5	1.802,2
Thermal Power linear mt. Watt a $\Delta t=40^\circ\text{C}$	156,9	235,8	313,9	390,7	466,4	540,8	617,0	688,2	757,7	825,6	892,0	956,8	1.019,8	1.081,2	1.141,3	1.199,6	1.256,4	1.311,9	1.365,7
Thermal Power linear mt. Watt a $\Delta t=30^\circ\text{C}$	108,9	163,8	218,3	271,9	324,9	377,1	433,8	483,6	532,4	579,7	626,2	671,4	715,3	757,9	799,8	840,2	879,4	918,0	955,1

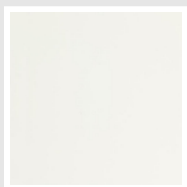
Thermal Power linear mt. Watt a $\Delta t=20^{\circ}\text{C}$	65,1	98,1	130,8	163,2	195,1	226,9	264,0	294,2	323,7	352,2	380,3	407,6	433,9	459,4	484,5	508,6	531,9	555,0	577,0
Exponent	1,269	1,266	1,263	1,260	1,257	1,253	1,225	1,226	1,227	1,229	1,230	1,231	1,233	1,235	1,236	1,238	1,240	1,241	1,243

Data Set

Height (mm) sub>	NÂ° Elements		500	530	630	650	680	730	830	850	900	1200	1500	1800	2000
160	4	Watt =	104	110	131	135	142	152	173	177	187	250	312	375	416
240	6	Watt =	156	166	197	203	213	228	260	266	282	375	469	563	626
320	8	Watt =	208	221	262	270	283	304	345	354	374	499	624	749	832
400	10	Watt =	259	274	326	336	352	378	430	440	466	621	776	932	1035
480	12	Watt =	309	327	389	401	420	451	512	525	556	741	926	1111	1235
560	14	Watt =	358	379	451	465	486	522	594	608	644	858	1073	1287	1430
640	16	Watt =	406	430	511	527	551	592	673	689	730	973	1216	1460	1622
720	18	Watt =	452	479	570	588	615	660	751	769	814	1086	1357	1628	1809
800	20	Watt =	498	528	628	648	678	727	827	847	897	1196	1495	1794	1993
880	22	Watt =	543	576	684	706	739	793	901	923	977	1303	1629	1955	2172
960	24	Watt =	587	622	739	763	798	857	974	998	1056	1408	1761	2113	2347
1040	26	Watt =	630	667	793	818	856	919	1045	1070	1133	1511	1889	2267	2518
1120	28	Watt =	671	712	846	873	913	980	1115	1141	1209	1611	2014	2417	2686
1200	30	Watt =	712	755	897	926	969	1040	1182	1211	1282	1709	2136	2564	2849
1280	32	Watt =	752	797	947	977	1023	1098	1248	1278	1353	1805	2256	2707	3008
1360	34	Watt =	791	838	996	1028	1075	1154	1312	1344	1423	1898	2372	2846	3163
1440	36	Watt =	828	878	1044	1077	1127	1210	1375	1408	1491	1988	2485	2982	
1520	38	Watt =	865	917	1090	1125	1177	1263	1436	1471	1557	2077	2596	3115	
1600	40	Watt =	901	955	1135	1171	1225	1316	1496	1532	1622	2163	2703		

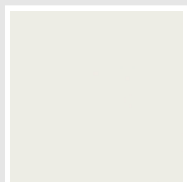
Colors and Finishes

STANDARD

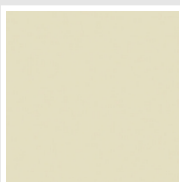


Bianco Standard
Cod. 01

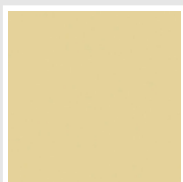
CLASSIC



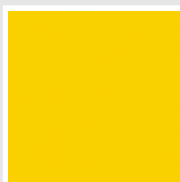
Bianco Edelweiss
Cod. 34



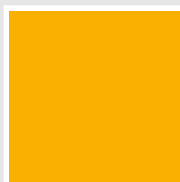
Avorio - RAL 1013
Cod. 02



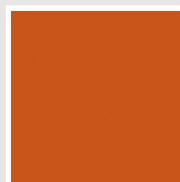
Beige Cream
Cod. 26



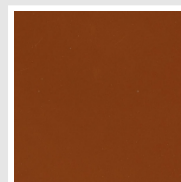
Giallo - RAL 1021
Cod. 04



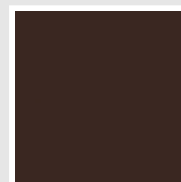
Giallo Melone - RAL
1028
Cod. E7



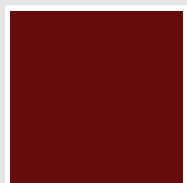
Arancio - RAL 2004
Cod. 17



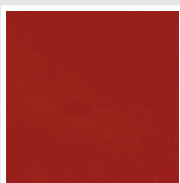
Marrone Ruggine -
RAL 8004
Cod. E1



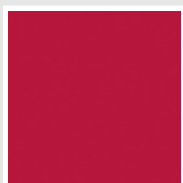
Marrone - RAL 8017
Cod. 09



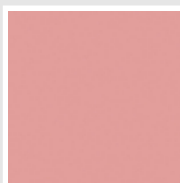
Amaranto - RAL 3003
Cod. 06



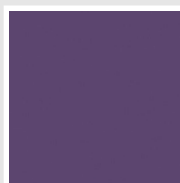
Rosso - RAL 3000
Cod. 05



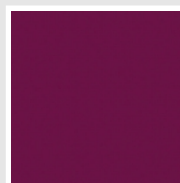
Rosso Fragola - RAL
3018
Cod. Y3



Rosa - RAL 3015
Cod. R2



Lilla Bluastro - RAL
4005
Cod. R3



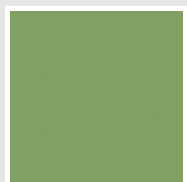
Porpora Traffico -
RAL 4006
Cod. R6



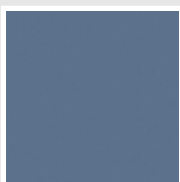
Verde Bosco - RAL
6005
Cod. 19



Verde Erba - RAL
6018
Cod. N3



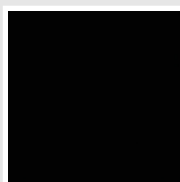
Verde Salvia - RAL
6021
Cod. E6



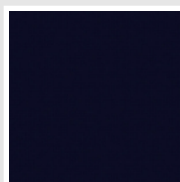
Blu Pastello - RAL
5024
Cod. G7



Grigio Manhattan
Cod. 03

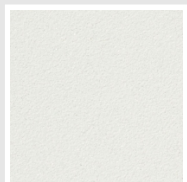


Nero - RAL 9005
Cod. 10

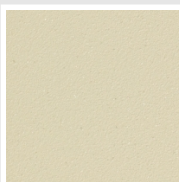


Deep Blue
Cod. 2F

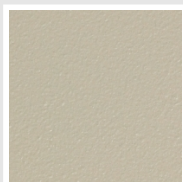
SPECIAL



Bianco Perla
Cod. 16



Quartz 1
Cod. 1C



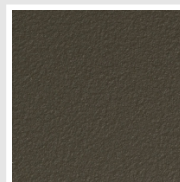
Sablé
Cod. Y4



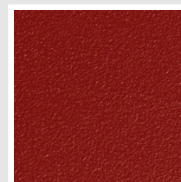
Quartz 2
Cod. 2C



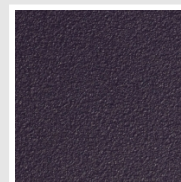
Sunstone
Cod. 2D



Bruno Tabacco
Cod. 1B



Flame Red
Cod. 7D



Purple Blue
Cod. 1D



Azurite 3
Cod. 6C

Grigio Medio
Cod. 4D

Grigio Titanio
Metallizzato - RAL
9023
Cod. L3

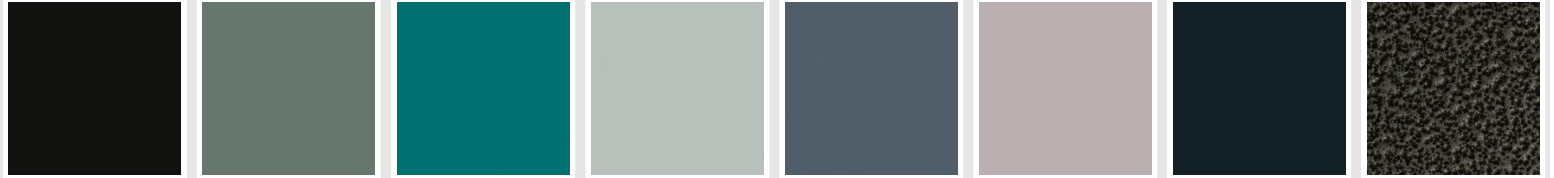
Grigio Perla
Cod. L6

Nero Grafite
Cod. 18

Grigio Quarzo
Cod. 31

Nero Satinato
Cod. 30

Bianco Opaco
Cod. J8



Nero Opaco
Cod. K1

Agave
Cod. 9N

Blu Baltico
Cod. 1P

Ghiaccio
Cod. 3P

Blu Colomba Opaco
Cod. 4P

Grigio Chiaro Opaco
Cod. 8N

Grigio Cenere - Ral
7021
Cod. G1

Grigio Martellato
Cod. 32



Rame Martellato
Cod. J4

RAL



Other RAL Colours (following feasibility study)
Cod. ALTRIRAL

The Colors used in this folder are not considered binding. The different technological painting processes and the materials used for the realization can not have a perfect color match with the delivered product. Irsap company reserves the right to introduce at any time whatever modifications necessary to the improvement of the product.