

Sax 2 Vertical

A sober profile, decided lines and great dimensional modularity are the characteristics that make Sax a unique and contemporary product. The range includes both vertical and horizontal models and versions with a single or double row. The latter is ideal for environments that require a high heating performance.



Sax 2 Verticale, Vertical, 18 elements, Hight 1800 mm, Lenght 720 mm, Brown - RAL 8017

Construction features

- manifolds with a 30 mm diameter circular section
- tubes made of sheet steel with a 20x25 mm rectangular section
- manifold threading 1/2" Gas right
- maximum working pressure 4 bar
- maximum working temperature 95°C

Standard equipment

- wall fixing systems with screws and anchors
- 1/2" blind plug with piper cover kit
- 1/2" air vent

Certifications



Plus



Technical data

Model	Depth (mm)	Height (mm)	Conn. C. (mm)	Weight (kg)	Capacity (lt)	$\Delta t=50^{\circ}\text{C}$ (btu/h)	$\Delta t=50^{\circ}\text{C}$ (kcal/h)	$\Delta t=50^{\circ}\text{C}$ (Watt)	$\Delta t=40^{\circ}\text{C}$ (Watt)	$\Delta t=30^{\circ}\text{C}$ (Watt)	$\Delta t=20^{\circ}\text{C}$ (Watt)	Exponent
500	80,0	500	470	0,82	0,44	148,7	37,5	43,6	32,8	22,7	13,5	1,278
530	80,0	530	500	0,86	0,47	156,8	39,5	46,0	34,5	23,9	14,2	1,279
630	80,0	630	600	1,00	0,55	183,3	46,2	53,7	40,4	27,9	16,6	1,282
650	80,0	650	620	1,03	0,57	188,5	47,5	55,3	41,5	28,7	17,1	1,283
680	80,0	680	650	1,07	0,59	196,4	49,5	57,5	43,2	29,9	17,8	1,284
730	80,0	730	700	1,14	0,63	209,3	52,8	61,3	46,0	31,8	18,9	1,285
830	80,0	830	800	1,28	0,71	234,8	59,2	68,8	51,6	35,6	21,1	1,289
850	80,0	850	820	1,31	0,73	239,8	60,5	70,3	52,7	36,4	21,6	1,289
900	80,0	900	870	1,38	0,77	252,4	63,6	74,0	55,5	38,2	22,7	1,291
1200	80,0	1200	1170	1,80	1,01	325,5	82,0	95,4	71,4	49,2	29,1	1,297
1500	80,0	1500	1470	2,22	1,26	395,4	99,7	115,9	86,8	59,7	35,3	1,297
1800	80,0	1800	1770	2,64	1,50	462,5	116,6	135,6	101,5	69,8	41,2	1,299
2000	80,0	2000	1970	2,92	1,66	505,8	127,5	148,2	110,9	76,3	45,0	1,301

Thanks to the high performance of Irsap Sax2 Vertical radiators, the ideal Δt for low temperature projects is Δt at 30°C .

For Δt different from 50°C use the formula: $Q=Q_n (\Delta t / 50)^n$

Standard equipment

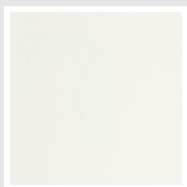
- wall fixing systems with screws and anchors
- 1/2" blind plug with piper cover kit
- 1/2" air vent

Data Set

Length (mm) sub>	NÂ° Elements	Watt =	500	530	630	650	680	730	830	850	900	1200	1500	1800	2000
160	4	Watt =	174	184	215	221	230	245	275	281	296	382	464	542	593
240	6	Watt =	262	276	322	332	345	368	413	422	444	572	695	813	890
320	8	Watt =	349	368	430	442	460	491	550	562	592	763	927	1084	1186
400	10	Watt =	436	460	537	553	576	613	688	703	740	954	1159	1356	1482
480	12	Watt =	523	552	645	663	691	736	826	843	888	1145	1391	1627	1779
560	14	Watt =	610	643	752	774	806	859	963	984	1036	1336	1622	1898	2076
640	16	Watt =	697	735	860	884	921	981	1101	1125	1184	1526	1854	2169	2372
720	18	Watt =	785	827	967	995	1036	1104	1239	1265	1331	1717	2086	2440	2668
800	20	Watt =	872	919	1075	1105	1151	1227	1376	1406	1479	1908	2318	2711	2965
880	22	Watt =	959	1011	1182	1216	1266	1349	1514	1546	1627	2099	2550	2982	3262
960	24	Watt =	1046	1103	1290	1326	1381	1472	1651	1687	1775	2290	2781	3253	
1040	26	Watt =	1133	1195	1397	1437	1496	1595	1789	1828	1923	2480	3013		
1120	28	Watt =	1221	1287	1504	1547	1611	1718	1927	1968	2071	2671	3245		
1200	30	Watt =	1308	1379	1612	1658	1726	1840	2064	2109	2219	2862			
1280	32	Watt =	1395	1471	1719	1768	1842	1963	2202	2249	2367	3053			
1360	34	Watt =	1482	1563	1827	1879	1957	2086	2340	2390	2515	3244			
1440	36	Watt =	1569	1655	1934	1989	2072	2208	2477	2530	2663				
1520	38	Watt =	1656	1746	2042	2100	2187	2331	2615	2671	2811				
1600	40	Watt =	1744	1838	2149	2210	2302	2454	2752	2812	2959				

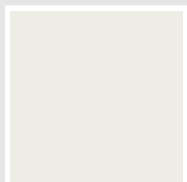
Colors and Finishes

STANDARD



Bianco Standard
Cod. 01

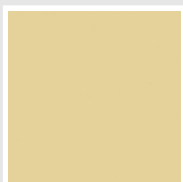
CLASSIC



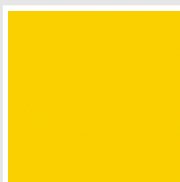
Bianco Edelweiss
Cod. 34



Avorio - RAL 1013
Cod. 02



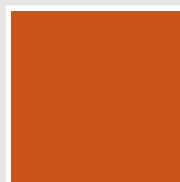
Beige Cream
Cod. 26



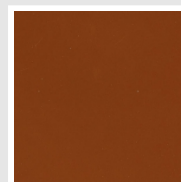
Giallo - RAL 1021
Cod. 04



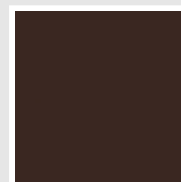
Giallo Melone - RAL
1028
Cod. E7



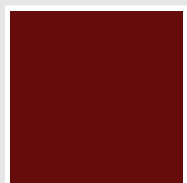
Arancio - RAL 2004
Cod. 17



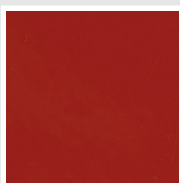
Marrone Ruggine -
RAL 8004
Cod. E1



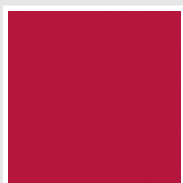
Marrone - RAL 8017
Cod. 09



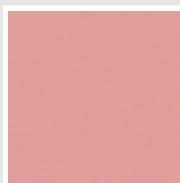
Amaranto - RAL 3003
Cod. 06



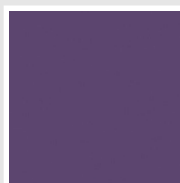
Rosso - RAL 3000
Cod. 05



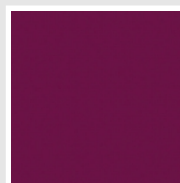
Rosso Fragola - RAL
3018
Cod. Y3



Rosa - RAL 3015
Cod. R2



Lilla Bluastro - RAL
4005
Cod. R3



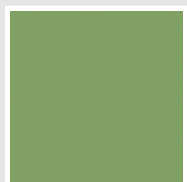
Porpora Traffico -
RAL 4006
Cod. R6



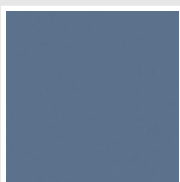
Verde Bosco - RAL
6005
Cod. 19



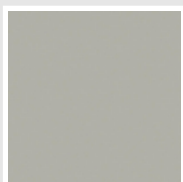
Verde Erba - RAL
6018
Cod. N3



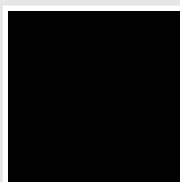
Verde Salvia - RAL
6021
Cod. E6



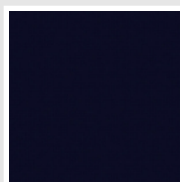
Blu Pastello - RAL
5024
Cod. G7



Grigio Manhattan
Cod. 03

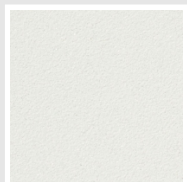


Nero - RAL 9005
Cod. 10

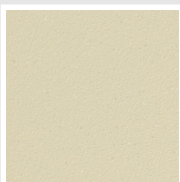


Deep Blue
Cod. 2F

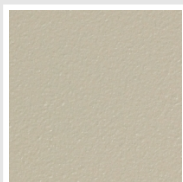
SPECIAL



Bianco Perla
Cod. 16



Quartz 1
Cod. 1C



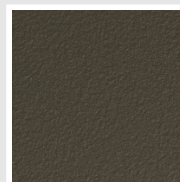
Sablé
Cod. Y4



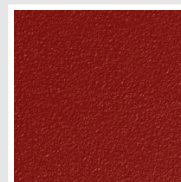
Quartz 2
Cod. 2C



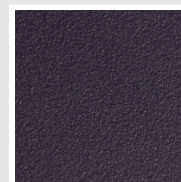
Sunstone
Cod. 2D



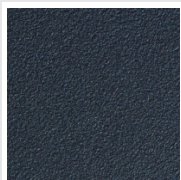
Bruno Tabacco
Cod. 1B



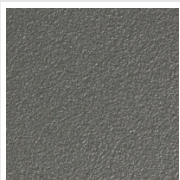
Flame Red
Cod. 7D



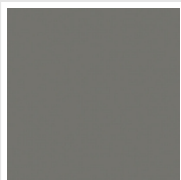
Purple Blue
Cod. 1D



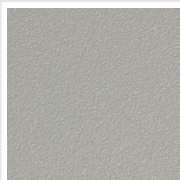
Azurite 3
Cod. 6C



Grigio Medio
Cod. 4D



Grigio Titanio
Metallizzato - RAL
9023
Cod. L3



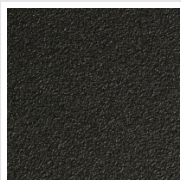
Grigio Perla
Cod. L6



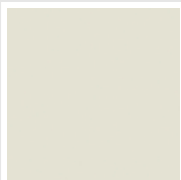
Nero Grafite
Cod. 18



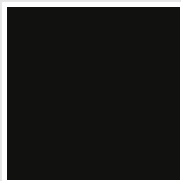
Grigio Quarzo
Cod. 31



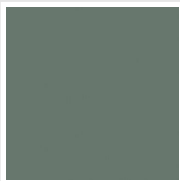
Nero Satinato
Cod. 30



Bianco Opaco
Cod. J8



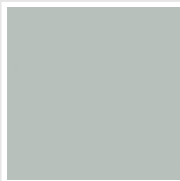
Nero Opaco
Cod. K1



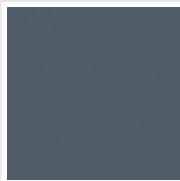
Agave
Cod. 9N



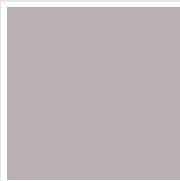
Blu Baltico
Cod. 1P



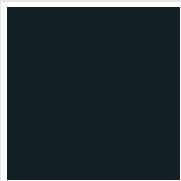
Ghiaccio
Cod. 3P



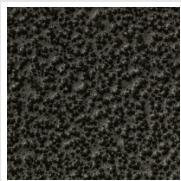
Blu Colomba Opaco
Cod. 4P



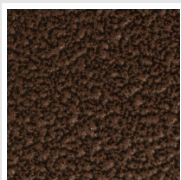
Grigio Chiaro Opaco
Cod. 8N



Grigio Cenere - Ral
7021
Cod. G1



Grigio Martellato
Cod. 32



Rame Martellato
Cod. J4

RAL



Other RAL Colours (following feasibility study)
Cod. ALTRIRAL

The Colors used in this folder are not considered binding. The different technological painting processes and the materials used for the realization can not have a perfect color match with the delivered product. Irsap company reserves the right to introduce at any time whatever modifications necessary to the improvement of the product.