

Horizontal Sax is ideal for settings with refined and original architectural lines, where the shape of the radiator enhances the environment, giving it a personal touch.



Sax 2 Orizzontale, 15 elements, Hight 600 mm, Lenght 1800 mm, Standard White

Construction features

manifolds with a 30 mm diameter circular section
tubes made of sheet steel with a 20x25 mm rectangular section
manifold threading 1/2" Gas right
maximum working pressure 4 bar
maximum working temperature 95°C

Standard equipment

wall fixing systems with screws and anchors
1/2" blind plug with piper cover kit
1/2" air vent

Certifications



Plus



Technical data

Model	Depth (mm)	Length (mm)	Conn. C. (mm)	Weight (kg)	Capacity (lt)
500	80,0	500	470	0,82	0,44
530	80,0	530	500	0,86	0,47
630	80,0	630	600	1,00	0,55
650	80,0	650	620	1,03	0,57
680	80,0	680	650	1,07	0,59
730	80,0	730	700	1,14	0,63
830	80,0	830	800	1,28	0,71
850	80,0	850	820	1,31	0,73
900	80,0	900	870	1,38	0,77
1200	80,0	1200	1170	1,80	1,01
1500	80,0	1500	1470	2,22	1,26
1800	80,0	1800	1770	2,64	1,50
2000	80,0	2000	1970	2,92	1,66

Thanks to the high performance of Irsap Sax Horizontal radiators, the ideal Δt for low temperature projects is Δt at 30°C.

For Δt different from 50°C use the formula: $Q=Q_n (\Delta t / 50)^n$

Standard equipment

- wall fixing systems with screws and anchors • 1/2" blind plug with piper cover kit • 1/2" air vent

Number elements	4	6	8	10	12	14	16	18	20	22	24	26	28	30	32	34	36	38	40
Btu/h a $\Delta t=50^\circ\text{C}$	1.398,7	1.952,1	2.465,6	2.947,6	3.404,1	3.838,4	4.252,8	4.649,5	5.029,5	5.394,8	5.745,8	6.083,4	6.408,4	6.721,8	7.023,6	7.314,8	7.595,8	7.866,5	8.128,1
Thermal Power linear mt. Watt a $\Delta t=50^\circ\text{C}$	409,7	571,8	722,2	863,4	997,1	1.124,3	1.245,7	1.361,9	1.473,2	1.580,2	1.683,0	1.781,9	1.877,1	1.968,9	2.057,3	2.142,6	2.224,9	2.304,2	2.380,8
Thermal Power linear mt. Watt a $\Delta t=40^\circ\text{C}$	307,3	429,2	542,4	648,9	749,7	845,9	938,5	1.028,1	1.114,1	1.195,0	1.272,5	1.347,0	1.418,9	1.488,0	1.554,5	1.618,9	1.680,7	1.740,2	1.797,7
Thermal Power linear mt. Watt a $\Delta t=30^\circ\text{C}$	212,1	296,4	375,0	449,0	519,1	586,2	651,5	715,5	777,2	833,6	887,4	939,0	989,2	1.037,1	1.083,1	1.128,0	1.170,7	1.211,8	1.251,5

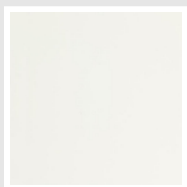
Thermal Power linear mt. Watt a $\Delta t=20^{\circ}\text{C}$	125,8	176,0	222,9	267,2	309,2	349,5	389,4	429,3	467,8	501,8	533,9	564,8	594,9	623,5	650,9	677,8	703,2	727,6	751,1
Exponent	1,289	1,286	1,283	1,280	1,278	1,275	1,269	1,260	1,252	1,252	1,253	1,254	1,254	1,255	1,256	1,256	1,257	1,258	1,259

Data Set

Height (mm) sub>	NÂ° Elements		500	530	630	650	680	730	830	850	900	1200	1500	1800	2000
160	4	Watt =	205	217	258	266	279	299	340	348	369	492	615	737	819
240	6	Watt =	286	303	360	372	389	417	475	486	515	686	858	1029	1144
320	8	Watt =	361	383	455	469	491	527	599	614	650	867	1083	1300	1444
400	10	Watt =	432	458	544	561	587	630	717	734	777	1036	1295	1554	1727
480	12	Watt =	499	528	628	648	678	728	828	848	897	1197	1496	1795	1994
560	14	Watt =	562	596	708	731	765	821	933	956	1012	1349	1686	2024	2249
640	16	Watt =	623	660	785	810	847	909	1034	1059	1121	1495	1869	2242	2491
720	18	Watt =	681	722	858	885	926	994	1130	1158	1226	1634	2043	2451	2724
800	20	Watt =	737	781	928	958	1002	1075	1223	1252	1326	1768	2210	2652	2946
880	22	Watt =	790	838	996	1027	1075	1154	1312	1343	1422	1896	2370	2844	3160
960	24	Watt =	842	892	1060	1094	1144	1229	1397	1431	1515	2020	2524	3029	
1040	26	Watt =	891	944	1123	1158	1212	1301	1479	1515	1604	2138	2673		
1120	28	Watt =	939	995	1183	1220	1276	1370	1558	1596	1689	2253	2816		
1200	30	Watt =	984	1044	1240	1280	1339	1437	1634	1674	1772	2363			
1280	32	Watt =	1029	1090	1296	1337	1399	1502	1708	1749	1852	2469			
1360	34	Watt =	1071	1136	1350	1393	1457	1564	1778	1821	1928	2571			
1440	36	Watt =	1112	1179	1402	1446	1513	1624	1847	1891	2002				
1520	38	Watt =	1152	1221	1452	1498	1567	1682	1912	1959	2074				
1600	40	Watt =	1190	1262	1500	1548	1619	1738	1976	2024	2143				

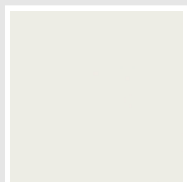
Colors and Finishes

STANDARD

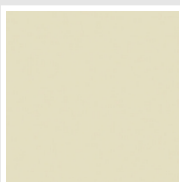


Bianco Standard
Cod. 01

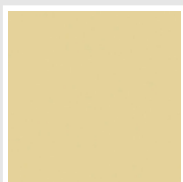
CLASSIC



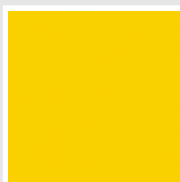
Bianco Edelweiss
Cod. 34



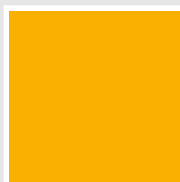
Avorio - RAL 1013
Cod. 02



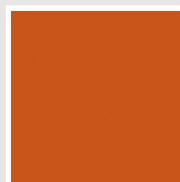
Beige Cream
Cod. 26



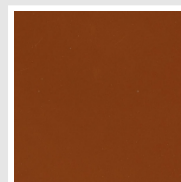
Giallo - RAL 1021
Cod. 04



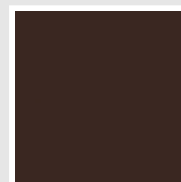
Giallo Melone - RAL
1028
Cod. E7



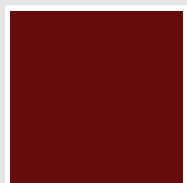
Arancio - RAL 2004
Cod. 17



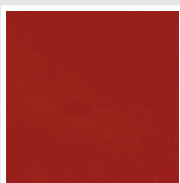
Marrone Ruggine -
RAL 8004
Cod. E1



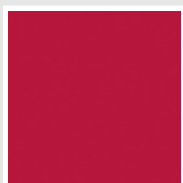
Marrone - RAL 8017
Cod. 09



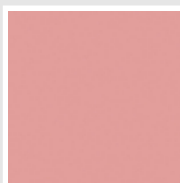
Amaranto - RAL 3003
Cod. 06



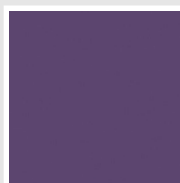
Rosso - RAL 3000
Cod. 05



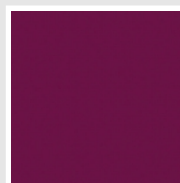
Rosso Fragola - RAL
3018
Cod. Y3



Rosa - RAL 3015
Cod. R2



Lilla Bluastro - RAL
4005
Cod. R3



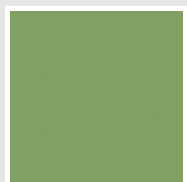
Porpora Traffico -
RAL 4006
Cod. R6



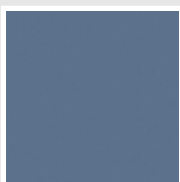
Verde Bosco - RAL
6005
Cod. 19



Verde Erba - RAL
6018
Cod. N3



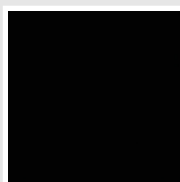
Verde Salvia - RAL
6021
Cod. E6



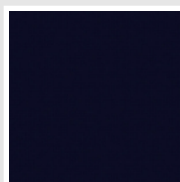
Blu Pastello - RAL
5024
Cod. G7



Grigio Manhattan
Cod. 03

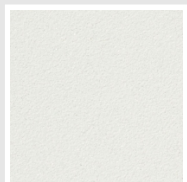


Nero - RAL 9005
Cod. 10

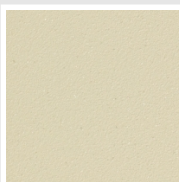


Deep Blue
Cod. 2F

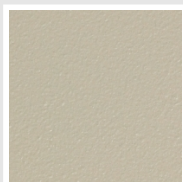
SPECIAL



Bianco Perla
Cod. 16



Quartz 1
Cod. 1C



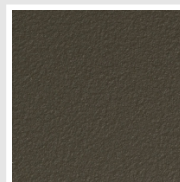
Sablé
Cod. Y4



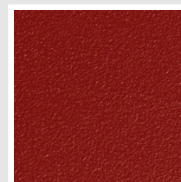
Quartz 2
Cod. 2C



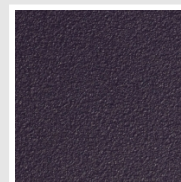
Sunstone
Cod. 2D



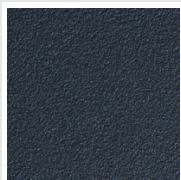
Bruno Tabacco
Cod. 1B



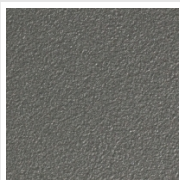
Flame Red
Cod. 7D



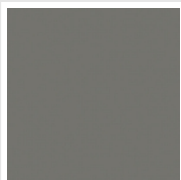
Purple Blue
Cod. 1D



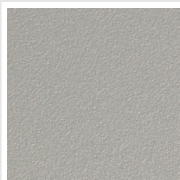
Azurite 3
Cod. 6C



Grigio Medio
Cod. 4D



Grigio Titanio
Metallizzato - RAL
9023
Cod. L3



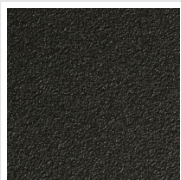
Grigio Perla
Cod. L6



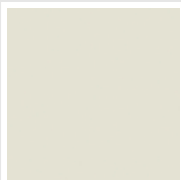
Nero Grafite
Cod. 18



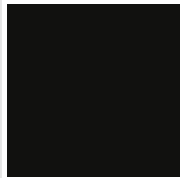
Grigio Quarzo
Cod. 31



Nero Satinato
Cod. 30



Bianco Opaco
Cod. J8



Nero Opaco
Cod. K1



Agave
Cod. 9N



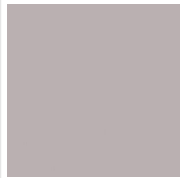
Blu Baltico
Cod. 1P



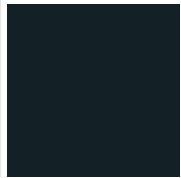
Ghiaccio
Cod. 3P



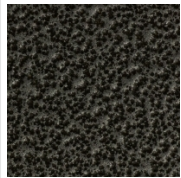
Blu Colomba Opaco
Cod. 4P



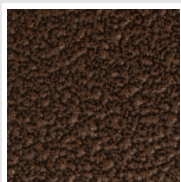
Grigio Chiaro Opaco
Cod. 8N



Grigio Cenere - Ral
7021
Cod. G1



Grigio Martellato
Cod. 32



Rame Martellato
Cod. J4

RAL



Other RAL Colours (following feasibility study)
Cod. ALTRIRAL

The Colors used in this folder are not considered binding. The different technological painting processes and the materials used for the realization can not have a perfect color match with the delivered product. Irsap company reserves the right to introduce at any time whatever modifications necessary to the improvement of the product.