

Piano represents the evolution of the “radiator” in shape and colour. Great versatility and high thermal powers make this product ideal for both small and large environments, even with low-temperature systems.



Piano Verticale, 12 elements, Hight 2020 mm, Lenght 680 mm, Sunstone

Construction features

- manifolds with a 30 mm diameter circular section
- tubes made of sheet steel with a 50x10 mm rectangular section
- manifold threading 1/2" Gas right
- maximum working pressure 4 bar
- maximum working temperature 95°C

Standard equipment

- wall fixing systems with screws and anchors
- 1/2" blind plug with piper cover kit
- 1/2" air vent

Certifications



Plus



Technical data

Model	Depth (mm)	Height (mm)	Conn. C. (mm)	Weight (kg)	Capacity (lt)	$\Delta t=50^{\circ}\text{C}$ (btu/h)	$\Delta t=50^{\circ}\text{C}$ (kcal/h)	$\Delta t=50^{\circ}\text{C}$ (Watt)	$\Delta t=40^{\circ}\text{C}$ (Watt)	$\Delta t=30^{\circ}\text{C}$ (Watt)	$\Delta t=20^{\circ}\text{C}$ (Watt)	Exponent
520	38,0	520	470	0,64	0,25	116,3	29,3	34,1	25,6	17,7	10,6	1,280
700	38,0	700	650	0,82	0,31	152,7	38,5	44,8	33,5	23,1	13,7	1,295
920	38,0	920	870	1,04	0,39	195,3	49,2	57,2	42,7	29,2	17,2	1,314
1220	38,0	1220	1170	1,39	0,48	255,9	64,5	75,0	56,0	38,4	22,6	1,310
1520	38,0	1520	1470	1,64	0,60	315,3	79,5	92,4	69,0	47,4	27,9	1,306
1820	38,0	1820	1770	1,94	0,70	375,0	94,5	109,9	82,2	56,5	33,3	1,302
2020	38,0	2020	1970	2,14	0,77	415,0	104,6	121,6	91,0	62,6	37,0	1,300
2220	38,0	2220	2170	2,39	0,83	455,3	114,8	133,4	99,9	68,8	40,7	1,297
2520	38,0	2520	2470	2,64	0,94	516,4	130,2	151,3	113,4	78,2	46,3	1,293

Thanks to the high performance of Irsap Piano Vertical radiators, the ideal Δt for low temperature projects is Δt at 30°C .

For Δt different from 50°C use the formula: $Q=Q_n (\Delta t / 50)^n$

Standard equipment

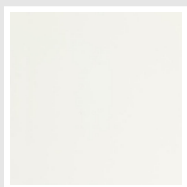
- wall fixing systems with screws and anchors
- 1/2" blind plug with piper cover kit
- 1/2" air vent

Data Set

Length (mm) sub>	NÂ° Elements		520	700	920	1220	1520	1820	2020	2220	2520
232	4	Watt =	136	179	229	300	370	440	487	534	605
344	6	Watt =	205	268	343	450	554	659	730	801	908
456	8	Watt =	273	358	458	600	739	879	973	1068	1211
568	10	Watt =	341	448	572	750	924	1099	1216	1334	1514
680	12	Watt =	409	537	687	900	1109	1319	1460	1601	1816
792	14	Watt =	477	626	801	1050	1294	1539	1703	1868	2119
904	16	Watt =	545	716	916	1200	1479	1758	1946	2135	2422
1016	18	Watt =	614	806	1030	1350	1663	1978	2189	2402	2724
1128	20	Watt =	682	895	1145	1500	1848	2198	2433	2669	3027
1240	22	Watt =	750	984	1259	1650	2033	2418	2676	2936	3330
1352	24	Watt =	818	1074	1374	1800	2218	2638	2919	3203	
1464	26	Watt =	886	1164	1488	1950	2403	2857	3162		
1576	28	Watt =	955	1253	1602	2100	2587	3077			
1688	30	Watt =	1023	1342	1717	2250	2772	3297			

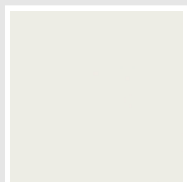
Colors and Finishes

STANDARD

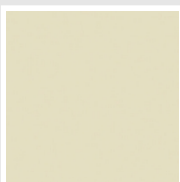


Bianco Standard
Cod. 01

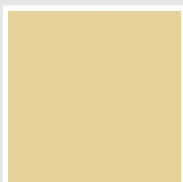
CLASSIC



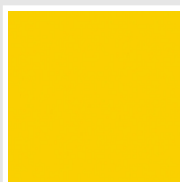
Bianco Edelweiss
Cod. 34



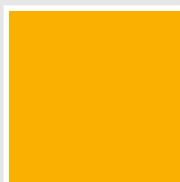
Avorio - RAL 1013
Cod. 02



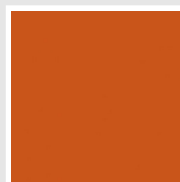
Beige Cream
Cod. 26



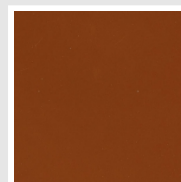
Giallo - RAL 1021
Cod. 04



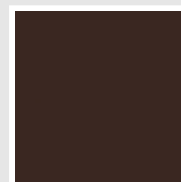
Giallo Melone - RAL
1028
Cod. E7



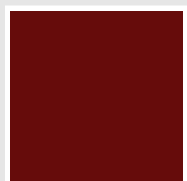
Arancio - RAL 2004
Cod. 17



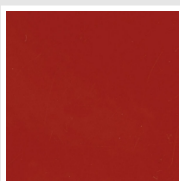
Marrone Ruggine -
RAL 8004
Cod. E1



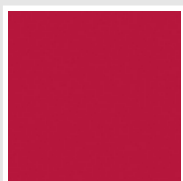
Marrone - RAL 8017
Cod. 09



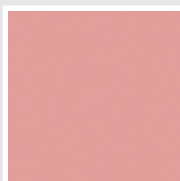
Amaranto - RAL 3003
Cod. 06



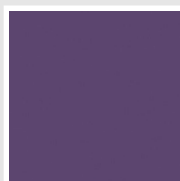
Rosso - RAL 3000
Cod. 05



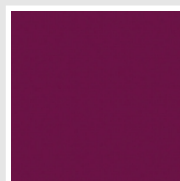
Rosso Fragola - RAL
3018
Cod. Y3



Rosa - RAL 3015
Cod. R2



Lilla Bluastro - RAL
4005
Cod. R3



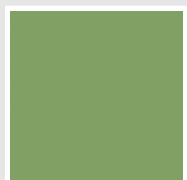
Porpora Traffico -
RAL 4006
Cod. R6



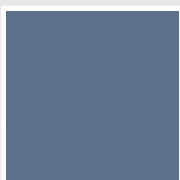
Verde Bosco - RAL
6005
Cod. 19



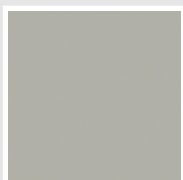
Verde Erba - RAL
6018
Cod. N3



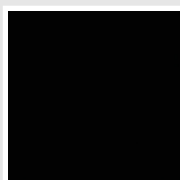
Verde Salvia - RAL
6021
Cod. E6



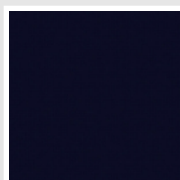
Blu Pastello - RAL
5024
Cod. G7



Grigio Manhattan
Cod. 03

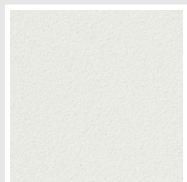


Nero - RAL 9005
Cod. 10

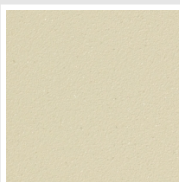


Deep Blue
Cod. 2F

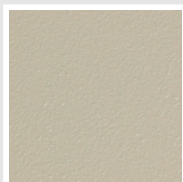
SPECIAL



Bianco Perla
Cod. 16



Quartz 1
Cod. 1C



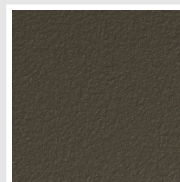
Sablé
Cod. Y4



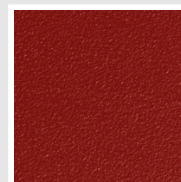
Quartz 2
Cod. 2C



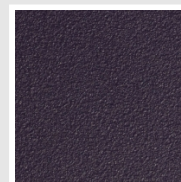
Sunstone
Cod. 2D



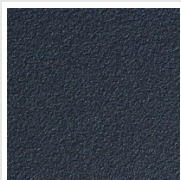
Bruno Tabacco
Cod. 1B



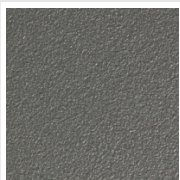
Flame Red
Cod. 7D



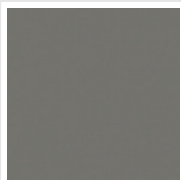
Purple Blue
Cod. 1D



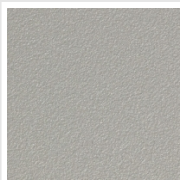
Azurite 3
Cod. 6C



Grigio Medio
Cod. 4D



Grigio Titanio
Metallizzato - RAL
9023
Cod. L3



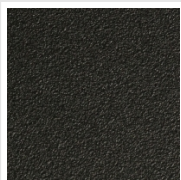
Grigio Perla
Cod. L6



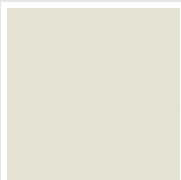
Nero Grafite
Cod. 18



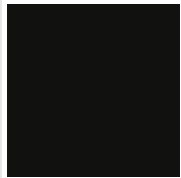
Grigio Quarzo
Cod. 31



Nero Satinato
Cod. 30



Bianco Opaco
Cod. J8



Nero Opaco
Cod. K1



Agave
Cod. 9N



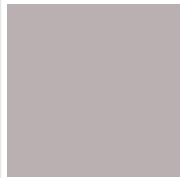
Blu Baltico
Cod. 1P



Ghiaccio
Cod. 3P



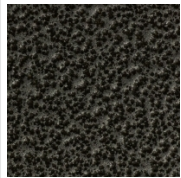
Blu Colomba Opaco
Cod. 4P



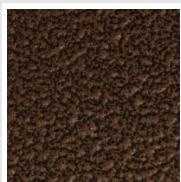
Grigio Chiaro Opaco
Cod. 8N



Grigio Cenere - Ral
7021
Cod. G1



Grigio Martellato
Cod. 32



Rame Martellato
Cod. J4

RAL



Other RAL Colours (following feasibility study)
Cod. ALTRIRAL

The Colors used in this folder are not considered binding. The different technological painting processes and the materials used for the realization can not have a perfect color match with the delivered product. Irsap company reserves the right to introduce at any time whatever modifications necessary to the improvement of the product.