

*Piano represents the evolution of the “radiator” in shape and colour. Great versatility and high thermal powers make this product ideal for both small and large environments, even with low-temperature systems.*



Piano 2 Orizzontale, 10 elements, Height 568 mm, Length 1520 mm, Standard White

## Construction features

- manifolds with a 30 mm diameter circular section
- tubes made of sheet steel with a 50x10 mm rectangular section
- manifold threading 1/2" Gas right
- maximum working pressure 4 bar
- maximum working temperature 95°C

## Standard equipment

- wall fixing systems with screws and anchors
- 1/2" blind plug with piper cover kit
- 1/2" air vent

## Certifications



## Plus



## Technical data

Model	Depth (mm)	Length (mm)	Conn. C. (mm)	Weight (kg)	Capacity (lt)
520	46,0	520	470	1,16	0,43
700	46,0	700	650	1,52	0,55
920	46,0	920	870	1,96	0,71
1220	46,0	1220	1170	2,61	0,91
1520	46,0	1520	1470	3,16	1,13
1820	46,0	1820	1770	3,76	1,34
2020	46,0	2020	1970	4,16	1,48
2220	46,0	2220	2170	4,61	1,61
2520	46,0	2520	2470	5,16	1,82

Thanks to the high performance of Irsap Piano2 Horizontal radiators, the ideal  $\Delta t$  for low temperature projects is  $\Delta t$  at 30°C.

For  $\Delta t$  different from 50°C use the formula:  $Q=Q_n (\Delta t / 50)^n$

### Standard equipment

- wall fixing systems with screws and anchors
- 1/2" blind plug with piper cover kit
- 1/2" air vent

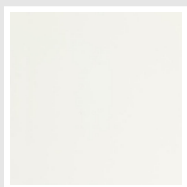
Number elements	4	6	8	10	12	14	16	18	20	22	24	26	28	30
Btu/h a $\Delta t=50^\circ\text{C}$	1.479,3	2.069,9	2.623,7	3.148,7	3.650,6	4.132,0	4.595,2	5.042,5	5.474,7	6.016,2	6.298,8	6.692,1	7.074,1	7.445,3
Thermal Power linear mt. Watt a $\Delta t=50^\circ\text{C}$	433,3	606,3	768,5	922,3	1.069,3	1.210,3	1.346,0	1.477,0	1.603,6	1.762,2	1.845,0	1.960,2	2.072,1	2.180,8
Thermal Power linear mt. Watt a $\Delta t=40^\circ\text{C}$	329,2	459,7	586,9	709,4	822,7	931,6	1.036,5	1.137,9	1.236,0	1.358,5	1.423,0	1.512,5	1.599,5	1.684,2
Thermal Power linear mt. Watt a $\Delta t=30^\circ\text{C}$	230,9	321,8	414,6	505,8	586,7	664,8	740,0	812,9	883,5	971,4	1.018,0	1.082,7	1.145,7	1.207,0
Thermal Power linear mt. Watt a $\Delta t=20^\circ\text{C}$	140,1	194,6	254,1	314,0	364,4	413,2	460,3	506,0	550,4	605,4	635,0	675,9	715,8	754,7
Exponent	1,232	1,240	1,208	1,176	1,175	1,173	1,171	1,169	1,167	1,166	1,164	1,162	1,160	1,158

## Data Set

Height (mm) sub>	NÂ° Elements		520	700	920	1220	1520	1820	2020	2220	2520
232	4	Watt =	225	303	399	529	659	789	875	962	1092
344	6	Watt =	315	424	558	740	922	1103	1225	1346	1528
456	8	Watt =	400	538	707	938	1168	1399	1552	1706	1937
568	10	Watt =	480	646	849	1125	1402	1679	1863	2048	2324
680	12	Watt =	556	749	984	1305	1625	1946	2160	2374	2695
792	14	Watt =	629	847	1113	1477	1840	2203	2445	2687	3050
904	16	Watt =	700	942	1238	1642	2046	2450	2719	2988	3392
1016	18	Watt =	768	1034	1359	1802	2245	2688	2984	3279	
1128	20	Watt =	834	1123	1475	1956	2437	2919			
1240	22	Watt =	916	1234	1621	2150	2679				
1352	24	Watt =	959	1292	1697	2251	2804				
1464	26	Watt =	1019	1372	1803	2391					
1576	28	Watt =	1077	1450	1906	2528					
1688	30	Watt =	1134	1527	2006	2661					

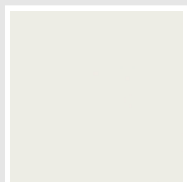
# Colors and Finishes

## STANDARD

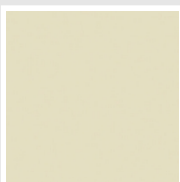


Bianco Standard  
Cod. 01

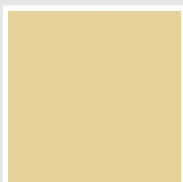
## CLASSIC



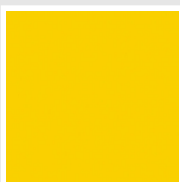
Bianco Edelweiss  
Cod. 34



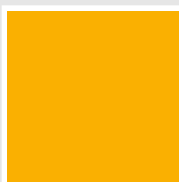
Avorio - RAL 1013  
Cod. 02



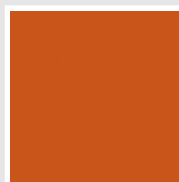
Beige Cream  
Cod. 26



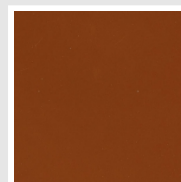
Giallo - RAL 1021  
Cod. 04



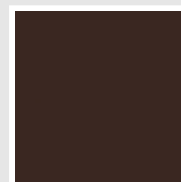
Giallo Melone - RAL  
1028  
Cod. E7



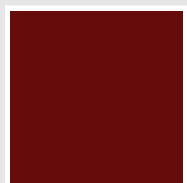
Arancio - RAL 2004  
Cod. 17



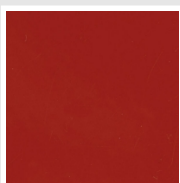
Marrone Ruggine -  
RAL 8004  
Cod. E1



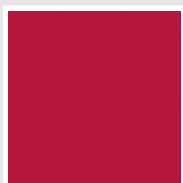
Marrone - RAL 8017  
Cod. 09



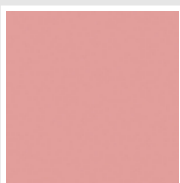
Amaranto - RAL 3003  
Cod. 06



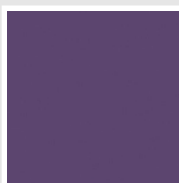
Rosso - RAL 3000  
Cod. 05



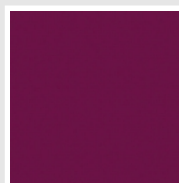
Rosso Fragola - RAL  
3018  
Cod. Y3



Rosa - RAL 3015  
Cod. R2



Lilla Bluastro - RAL  
4005  
Cod. R3



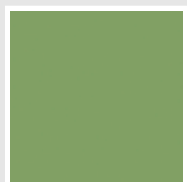
Porpora Traffico -  
RAL 4006  
Cod. R6



Verde Bosco - RAL  
6005  
Cod. 19



Verde Erba - RAL  
6018  
Cod. N3



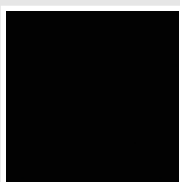
Verde Salvia - RAL  
6021  
Cod. E6



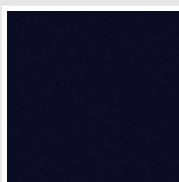
Blu Pastello - RAL  
5024  
Cod. G7



Grigio Manhattan  
Cod. 03

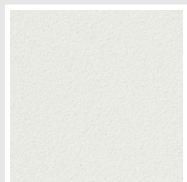


Nero - RAL 9005  
Cod. 10

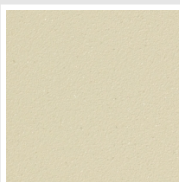


Deep Blue  
Cod. 2F

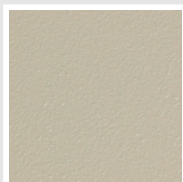
## SPECIAL



Bianco Perla  
Cod. 16



Quartz 1  
Cod. 1C



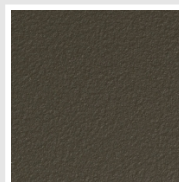
Sablé  
Cod. Y4



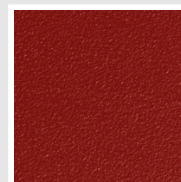
Quartz 2  
Cod. 2C



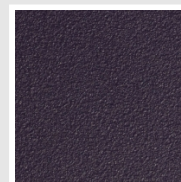
Sunstone  
Cod. 2D



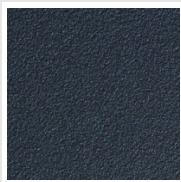
Bruno Tabacco  
Cod. 1B



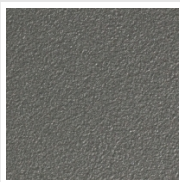
Flame Red  
Cod. 7D



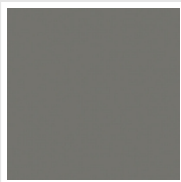
Purple Blue  
Cod. 1D



Azurite 3  
Cod. 6C



Grigio Medio  
Cod. 4D



Grigio Titanio  
Metallizzato - RAL  
9023  
Cod. L3



Grigio Perla  
Cod. L6



Nero Grafite  
Cod. 18



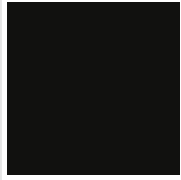
Grigio Quarzo  
Cod. 31



Nero Satinato  
Cod. 30



Bianco Opaco  
Cod. J8



Nero Opaco  
Cod. K1



Agave  
Cod. 9N



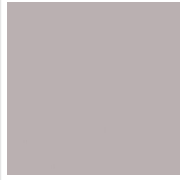
Blu Baltico  
Cod. 1P



Ghiaccio  
Cod. 3P



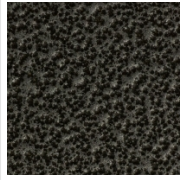
Blu Colomba Opaco  
Cod. 4P



Grigio Chiaro Opaco  
Cod. 8N



Grigio Cenere - Ral  
7021  
Cod. G1



Grigio Martellato  
Cod. 32



Rame Martellato  
Cod. J4

## RAL



Other RAL Colours (following feasibility study)  
Cod. ALTRIRAL

The Colors used in this folder are not considered binding. The different technological painting processes and the materials used for the realization can not have a perfect color match with the delivered product. Irsap company reserves the right to introduce at any time whatever modifications necessary to the improvement of the product.