

Piano represents the evolution of the “radiator” in shape and colour. Great versatility and high thermal powers make this product ideal for both small and large environments, even with low-temperature systems.



Piano 2 Verticale, 12 elements, Hight 2020 mm, Lenght 680 mm, Purple Blue

Construction features

- manifolds with a 30 mm diameter circular section
- tubes made of sheet steel with a 50x10 mm rectangular section
- manifold threading 1/2" Gas right
- maximum working pressure 4 bar
- maximum working temperature 95°C

Standard equipment

- wall fixing systems with screws and anchors
- 1/2" blind plug with piper cover kit
- 1/2" air vent

Certifications



Plus



Technical data

Model	Depth (mm)	Height (mm)	Conn. C. (mm)	Weight (kg)	Capacity (lt)	$\Delta t=50^{\circ}\text{C}$ (btu/h)	$\Delta t=50^{\circ}\text{C}$ (kcal/h)	$\Delta t=50^{\circ}\text{C}$ (Watt)	$\Delta t=40^{\circ}\text{C}$ (Watt)	$\Delta t=30^{\circ}\text{C}$ (Watt)	$\Delta t=20^{\circ}\text{C}$ (Watt)	Exponent
520	46,0	520	470	1,16	0,43	171,2	43,2	50,2	37,6	25,9	15,3	1,296
700	46,0	700	650	1,52	0,55	223,6	56,4	65,5	49,0	33,6	19,8	1,305
920	46,0	920	870	1,96	0,71	285,9	72,1	83,8	62,5	42,8	25,1	1,317
1220	46,0	1220	1170	2,61	0,91	369,0	93,0	108,1	80,6	55,2	32,4	1,316
1520	46,0	1520	1470	3,16	1,13	450,6	113,6	132,1	98,5	67,5	39,6	1,315
1820	46,0	1820	1770	3,76	1,34	531,2	133,9	155,7	116,1	79,6	46,7	1,314
2020	46,0	2020	1970	4,16	1,48	584,5	147,3	171,3	127,6	87,3	51,2	1,319
2220	46,0	2220	2170	4,61	1,61	637,6	160,7	186,9	139,1	95,0	55,5	1,324
2520	46,0	2520	2470	5,16	1,82	716,9	180,7	210,1	156,1	106,4	62,0	1,332

Thanks to the high performance of Irsap Piano2 Vertical radiators, the ideal Δt for low temperature projects is Δt at 30°C .

For Δt different from 50°C use the formula: $Q=Q_n (\Delta t / 50)^n$

Standard equipment

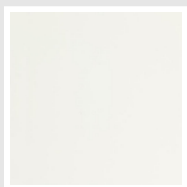
- wall fixing systems with screws and anchors
- 1/2" blind plug with piper cover kit
- 1/2" air vent

Data Set

Length (mm) sub>	NÂ° Elements		520	700	920	1220	1520	1820	2020	2220	2520
232	4	Watt =	201	262	335	433	528	623	685	747	840
344	6	Watt =	301	393	503	649	792	934	1028	1121	1261
456	8	Watt =	402	524	670	865	1056	1245	1370	1495	1681
568	10	Watt =	502	655	838	1081	1321	1557	1713	1869	2101
680	12	Watt =	602	786	1005	1298	1585	1868	2056	2242	2521
792	14	Watt =	703	917	1173	1514	1849	2180	2398	2616	2942
904	16	Watt =	803	1048	1341	1730	2113	2491	2741	2990	3362
1016	18	Watt =	903	1179	1508	1947	2377	2802	3084	3364	
1128	20	Watt =	1004	1310	1676	2163	2641	3114			
1240	22	Watt =	1104	1441	1843	2379	2905				
1352	24	Watt =	1205	1572	2011	2595	3169				
1464	26	Watt =	1305	1704	2179	2812					
1576	28	Watt =	1405	1835	2346	3028					
1688	30	Watt =	1506	1966	2514	3244					

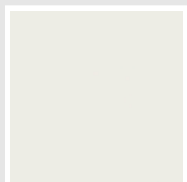
Colors and Finishes

STANDARD



Bianco Standard
Cod. 01

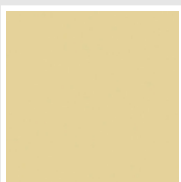
CLASSIC



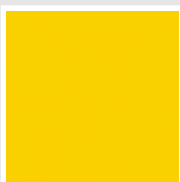
Bianco Edelweiss
Cod. 34



Avorio - RAL 1013
Cod. 02



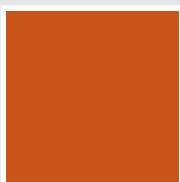
Beige Cream
Cod. 26



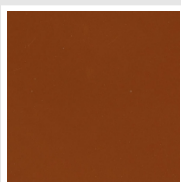
Giallo - RAL 1021
Cod. 04



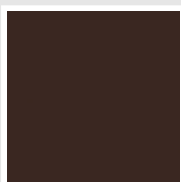
Giallo Melone - RAL
1028
Cod. E7



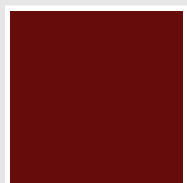
Arancio - RAL 2004
Cod. 17



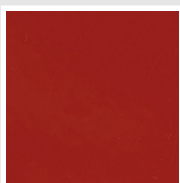
Marrone Ruggine -
RAL 8004
Cod. E1



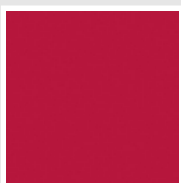
Marrone - RAL 8017
Cod. 09



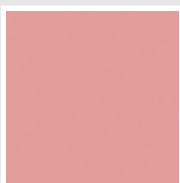
Amaranto - RAL 3003
Cod. 06



Rosso - RAL 3000
Cod. 05



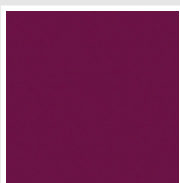
Rosso Fragola - RAL
3018
Cod. Y3



Rosa - RAL 3015
Cod. R2



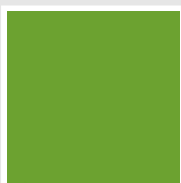
Lilla Bluastro - RAL
4005
Cod. R3



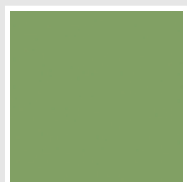
Porpora Traffico -
RAL 4006
Cod. R6



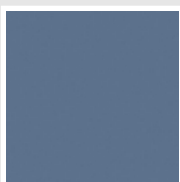
Verde Bosco - RAL
6005
Cod. 19



Verde Erba - RAL
6018
Cod. N3



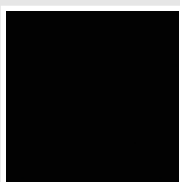
Verde Salvia - RAL
6021
Cod. E6



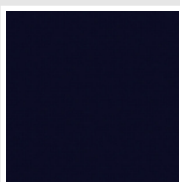
Blu Pastello - RAL
5024
Cod. G7



Grigio Manhattan
Cod. 03

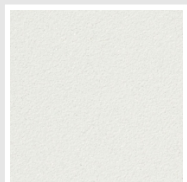


Nero - RAL 9005
Cod. 10

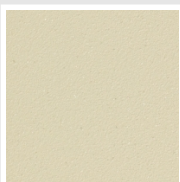


Deep Blue
Cod. 2F

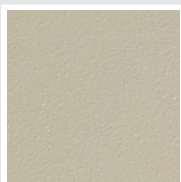
SPECIAL



Bianco Perla
Cod. 16



Quartz 1
Cod. 1C



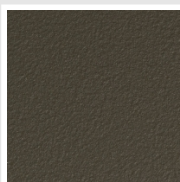
Sablé
Cod. Y4



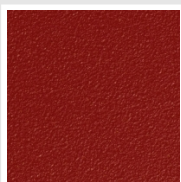
Quartz 2
Cod. 2C



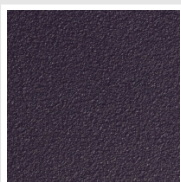
Sunstone
Cod. 2D



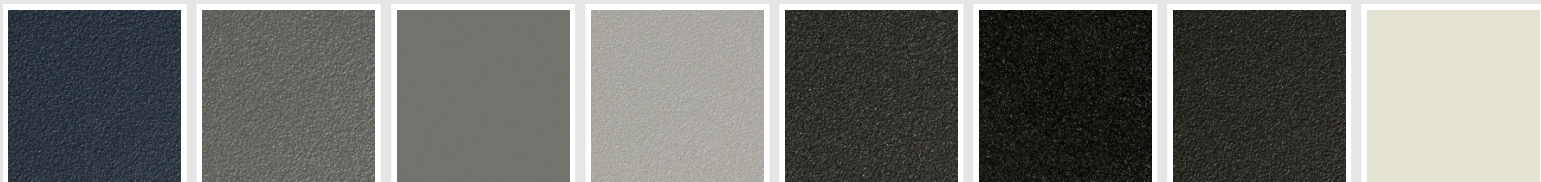
Bruno Tabacco
Cod. 1B



Flame Red
Cod. 7D



Purple Blue
Cod. 1D



Azurite 3
Cod. 6C

Grigio Medio
Cod. 4D

Grigio Titanio
Metallizzato - RAL
9023
Cod. L3

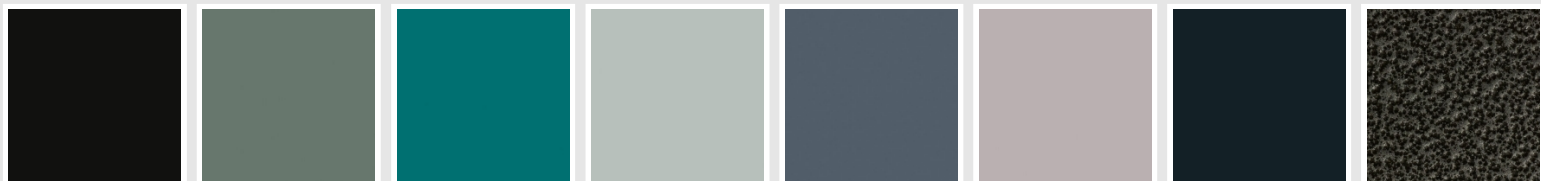
Grigio Perla
Cod. L6

Nero Grafite
Cod. 18

Grigio Quarzo
Cod. 31

Nero Satinato
Cod. 30

Bianco Opaco
Cod. J8



Nero Opaco
Cod. K1

Agave
Cod. 9N

Blu Baltico
Cod. 1P

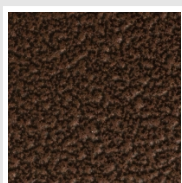
Ghiaccio
Cod. 3P

Blu Colomba Opaco
Cod. 4P

Grigio Chiaro Opaco
Cod. 8N

Grigio Cenere - Ral
7021
Cod. G1

Grigio Martellato
Cod. 32



Rame Martellato
Cod. J4

RAL



Other RAL Colours (following feasibility study)
Cod. ALTRIRAL

The Colors used in this folder are not considered binding. The different technological painting processes and the materials used for the realization can not have a perfect color match with the delivered product. Irsap company reserves the right to introduce at any time whatever modifications necessary to the improvement of the product.