

Piano represents the evolution of the “radiator” in shape and colour. Great versatility and high thermal powers make this product ideal for both small and large environments, even with low-temperature systems.



Piano 2 Orizzontale, 10 elements, Hight 568 mm, Lenght 1520 mm, Standard White

Construction features

- manifolds with a 30 mm diameter circular section
- tubes made of sheet steel with a 50x10 mm rectangular section
- manifold threading 1/2" Gas right
- maximum working pressure 4 bar
- maximum working temperature 95°C

Standard equipment

- wall fixing systems with screws and anchors
- 1/2" blind plug with piper cover kit
- 1/2" air vent

Certifications



Plus



Technical data

Model	Depth (mm)	Length (mm)	Conn. C. (mm)	Weight (kg)	Capacity (lt)
520	46,0	520	470	1,16	0,43
700	46,0	700	650	1,52	0,55
920	46,0	920	870	1,96	0,71
1220	46,0	1220	1170	2,61	0,91
1520	46,0	1520	1470	3,16	1,13
1820	46,0	1820	1770	3,76	1,34
2020	46,0	2020	1970	4,16	1,48
2220	46,0	2220	2170	4,61	1,61
2520	46,0	2520	2470	5,16	1,82

Thanks to the high performance of Irsap Piano2 Horizontal radiators, the ideal Δt for low temperature projects is Δt at 30°C.

For Δt different from 50°C use the formula: $Q=Q_n (\Delta t / 50)^n$

Standard equipment

- wall fixing systems with screws and anchors
- 1/2" blind plug with piper cover kit
- 1/2" air vent

Number elements	4	6	8	10	12	14	16	18	20	22	24	26	28	30
Btu/h a $\Delta t=50^\circ\text{C}$	1.479,3	2.069,9	2.623,7	3.148,7	3.650,6	4.132,0	4.595,2	5.042,5	5.474,7	6.016,2	6.298,8	6.692,1	7.074,1	7.445,3
Thermal Power linear mt. Watt a $\Delta t=50^\circ\text{C}$	433,3	606,3	768,5	922,3	1.069,3	1.210,3	1.346,0	1.477,0	1.603,6	1.762,2	1.845,0	1.960,2	2.072,1	2.180,8
Thermal Power linear mt. Watt a $\Delta t=40^\circ\text{C}$	329,2	459,7	586,9	709,4	822,7	931,6	1.036,5	1.137,9	1.236,0	1.358,5	1.423,0	1.512,5	1.599,5	1.684,2
Thermal Power linear mt. Watt a $\Delta t=30^\circ\text{C}$	230,9	321,8	414,6	505,8	586,7	664,8	740,0	812,9	883,5	971,4	1.018,0	1.082,7	1.145,7	1.207,0
Thermal Power linear mt. Watt a $\Delta t=20^\circ\text{C}$	140,1	194,6	254,1	314,0	364,4	413,2	460,3	506,0	550,4	605,4	635,0	675,9	715,8	754,7
Exponent	1,232	1,240	1,208	1,176	1,175	1,173	1,171	1,169	1,167	1,166	1,164	1,162	1,160	1,158

Data Set

Height (mm) sub>	NÂ° Elements		520	700	920	1220	1520	1820	2020	2220	2520
232	4	Watt =	225	303	399	529	659	789	875	962	1092
344	6	Watt =	315	424	558	740	922	1103	1225	1346	1528
456	8	Watt =	400	538	707	938	1168	1399	1552	1706	1937
568	10	Watt =	480	646	849	1125	1402	1679	1863	2048	2324
680	12	Watt =	556	749	984	1305	1625	1946	2160	2374	2695
792	14	Watt =	629	847	1113	1477	1840	2203	2445	2687	3050
904	16	Watt =	700	942	1238	1642	2046	2450	2719	2988	3392
1016	18	Watt =	768	1034	1359	1802	2245	2688	2984	3279	
1128	20	Watt =	834	1123	1475	1956	2437	2919			
1240	22	Watt =	916	1234	1621	2150	2679				
1352	24	Watt =	959	1292	1697	2251	2804				
1464	26	Watt =	1019	1372	1803	2391					
1576	28	Watt =	1077	1450	1906	2528					
1688	30	Watt =	1134	1527	2006	2661					

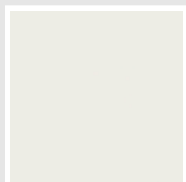
Colors and Finishes

STANDARD



Bianco Standard
Cod. 01

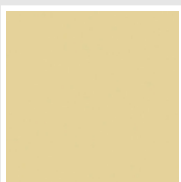
CLASSIC



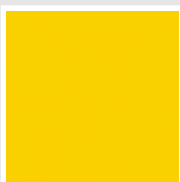
Bianco Edelweiss
Cod. 34



Avorio - RAL 1013
Cod. 02



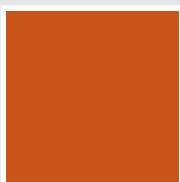
Beige Cream
Cod. 26



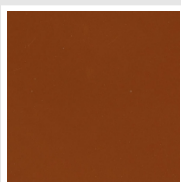
Giallo - RAL 1021
Cod. 04



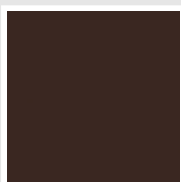
Giallo Melone - RAL
1028
Cod. E7



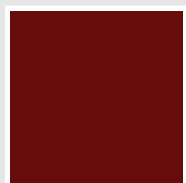
Arancio - RAL 2004
Cod. 17



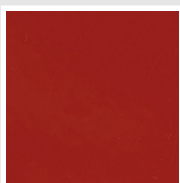
Marrone Ruggine -
RAL 8004
Cod. E1



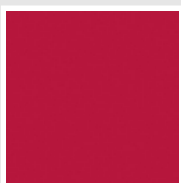
Marrone - RAL 8017
Cod. 09



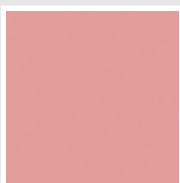
Amaranto - RAL 3003
Cod. 06



Rosso - RAL 3000
Cod. 05



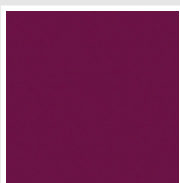
Rosso Fragola - RAL
3018
Cod. Y3



Rosa - RAL 3015
Cod. R2



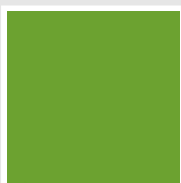
Lilla Bluastro - RAL
4005
Cod. R3



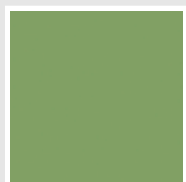
Porpora Traffico -
RAL 4006
Cod. R6



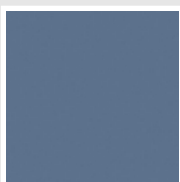
Verde Bosco - RAL
6005
Cod. 19



Verde Erba - RAL
6018
Cod. N3



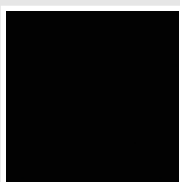
Verde Salvia - RAL
6021
Cod. E6



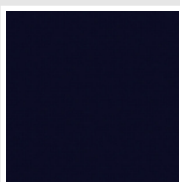
Blu Pastello - RAL
5024
Cod. G7



Grigio Manhattan
Cod. 03

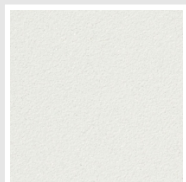


Nero - RAL 9005
Cod. 10

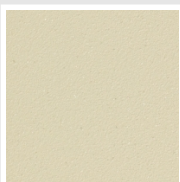


Deep Blue
Cod. 2F

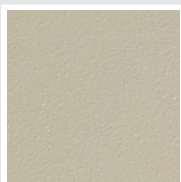
SPECIAL



Bianco Perla
Cod. 16



Quartz 1
Cod. 1C



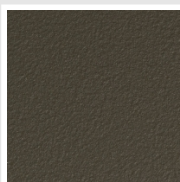
Sablé
Cod. Y4



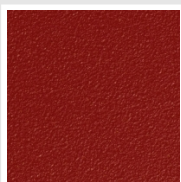
Quartz 2
Cod. 2C



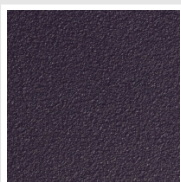
Sunstone
Cod. 2D



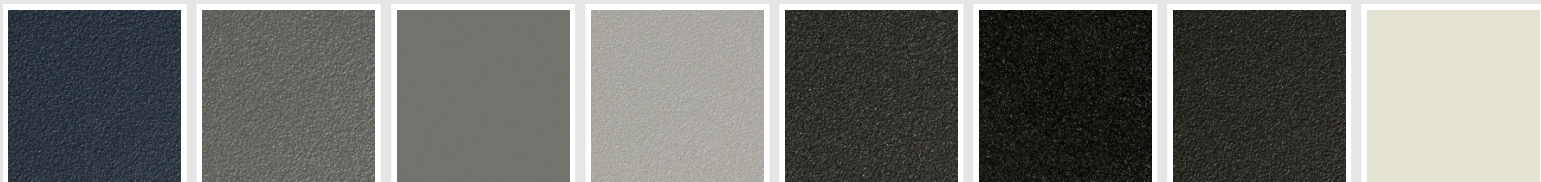
Bruno Tabacco
Cod. 1B



Flame Red
Cod. 7D



Purple Blue
Cod. 1D



Azurite 3
Cod. 6C

Grigio Medio
Cod. 4D

Grigio Titanio
Metallizzato - RAL
9023
Cod. L3

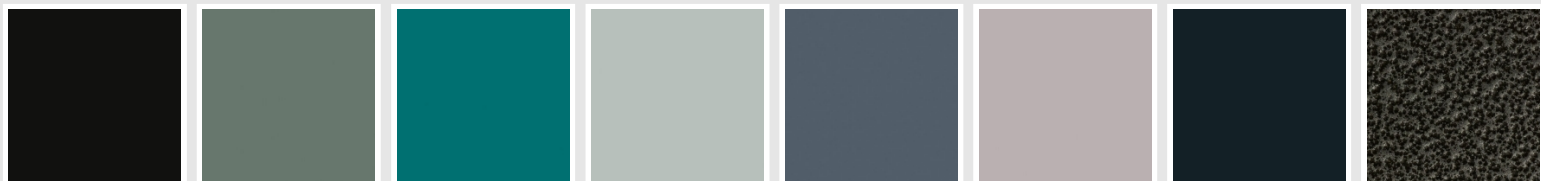
Grigio Perla
Cod. L6

Nero Grafite
Cod. 18

Grigio Quarzo
Cod. 31

Nero Satinato
Cod. 30

Bianco Opaco
Cod. J8



Nero Opaco
Cod. K1

Agave
Cod. 9N

Blu Baltico
Cod. 1P

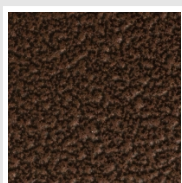
Ghiaccio
Cod. 3P

Blu Colomba Opaco
Cod. 4P

Grigio Chiaro Opaco
Cod. 8N

Grigio Cenere - Ral
7021
Cod. G1

Grigio Martellato
Cod. 32



Rame Martellato
Cod. J4

RAL



Other RAL Colours (following feasibility study)
Cod. ALTRIRAL

The Colors used in this folder are not considered binding. The different technological painting processes and the materials used for the realization can not have a perfect color match with the delivered product. Irsap company reserves the right to introduce at any time whatever modifications necessary to the improvement of the product.