

# Arpa12 Vertical

*A new entry in the IRSAP catalogue, the Arpa 12 completes its already vast modular design radiator range with a model that recalls precious filigree. Slender pipes follow one another in the creation of one single lightweight form. Slightly rounded ends make the product coherent in every detail. Performance is guaranteed also for low-temperature systems, while the range of Irsap colors offers versatility and fantasy for every room in the home or office.*



Arpa12, Vertical, 30 elements, Hight 1820 mm, Lenght 544 mm, Black - RAL 9005

## Construction features

manifolds with a 30 mm diameter circular section  
tubes made of sheet steel with an 12 mm diameter  
manifold threading 1/2" Gas right  
maximum working pressure 10 bar  
maximum working temperature 95°C

## Standard equipment

wall fixing systems with screws and anchors  
1/2" blind plug with piper cover kit  
1/2" air vent

## Certifications



## Plus



## Technical data

Model	Depth (mm)	Height (mm)	Conn. C. (mm)	Weight (kg)	Capacity (lt)	$\Delta t=50^{\circ}\text{C}$ (btu/h)	$\Delta t=50^{\circ}\text{C}$ (kcal/h)	$\Delta t=50^{\circ}\text{C}$ (Watt)	$\Delta t=40^{\circ}\text{C}$ (Watt)	$\Delta t=30^{\circ}\text{C}$ (Watt)	$\Delta t=20^{\circ}\text{C}$ (Watt)	Exponent
520	40,0	520	470	0,23	0,06	46,4	11,7	13,6	10,2	7,1	4,2	1,270
550	40,0	550	500	0,24	0,06	48,8	12,3	14,3	10,8	7,5	4,5	1,273
650	40,0	650	600	0,27	0,07	57,3	14,4	16,8	12,6	8,7	5,2	1,281
670	40,0	670	620	0,27	0,07	59,0	14,9	17,3	13,0	9,0	5,3	1,283
700	40,0	700	650	0,28	0,07	61,4	15,5	18,0	13,5	9,3	5,5	1,285
750	40,0	750	700	0,29	0,07	65,5	16,5	19,2	14,4	9,9	5,9	1,290
850	40,0	850	800	0,33	0,08	73,7	18,6	21,6	16,2	11,1	6,6	1,298
870	40,0	870	820	0,34	0,08	75,4	19,0	22,1	16,5	11,4	6,7	1,300
920	40,0	920	870	0,35	0,09	79,2	19,9	23,2	17,3	11,9	7,0	1,304
1220	40,0	1220	1170	0,45	0,10	103,4	26,1	30,3	22,7	15,6	9,2	1,302
1520	40,0	1520	1470	0,54	0,13	126,9	32,0	37,2	27,8	19,1	11,3	1,301
1820	40,0	1820	1770	0,64	0,15	149,8	37,8	43,9	32,9	22,6	13,4	1,298
2020	40,0	2020	1970	0,70	0,17	165,1	41,6	48,4	36,2	25,0	14,8	1,297
2220	40,0	2220	2170	0,77	0,18	180,2	45,4	52,8	39,5	27,2	16,1	1,295
2520	40,0	2520	2470	0,87	0,20	202,7	51,1	59,4	44,5	30,7	18,2	1,292

Thanks to the high performance of Irsap Arpa12 Vertical radiators, the ideal  $\Delta t$  for low temperature projects is  $\Delta t$  at  $30^{\circ}\text{C}$ .

For  $\Delta t$  different from  $50^{\circ}\text{C}$  use the formula:  $Q=Q_n (\Delta t / 50)^n$

### Standard equipment

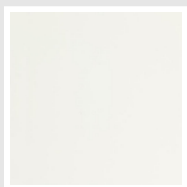
- wall fixing systems with screws and anchors
- 1/2" blind plug with piper cover kit
- 1/2" air vent

# Data Set

Length (mm) sub>	NÂ° Elements	520	550	650	670	700	750	850	870	920	1220	1520	1820	2020	2220	2520
76	4	Watt = 54	57	67	69	72	77	86	88	93	121	149	176	194	211	238
112	6	Watt = 82	86	101	104	108	115	130	133	139	182	223	263	290	317	356
148	8	Watt = 109	114	134	138	144	154	173	177	186	242	298	351	387	422	475
184	10	Watt = 136	143	168	173	180	192	216	221	232	303	372	439	484	528	594
220	12	Watt = 163	172	202	208	216	230	259	265	278	364	446	527	581	634	713
256	14	Watt = 190	200	235	242	252	269	302	309	325	424	521	615	678	739	832
292	16	Watt = 218	229	269	277	288	307	346	354	371	485	595	702	774	845	950
328	18	Watt = 245	257	302	311	324	346	389	398	418	545	670	790	871	950	1069
364	20	Watt = 272	286	336	346	360	384	432	442	464	606	744	878	968	1056	1188
400	22	Watt = 299	315	370	381	396	422	475	486	510	667	818	966	1065	1162	1307
436	24	Watt = 326	343	403	415	432	461	518	530	557	727	893	1054	1162	1267	1426
472	26	Watt = 354	372	437	450	468	499	562	575	603	788	967	1141	1258	1373	1544
508	28	Watt = 381	400	470	484	504	538	605	619	650	848	1042	1229	1355	1478	1663
544	30	Watt = 408	429	504	519	540	576	648	663	696	909	1116	1317	1452	1584	1782
580	32	Watt = 435	458	538	554	576	614	691	707	742	970	1190	1405	1549	1690	1901
616	34	Watt = 462	486	571	588	612	653	734	751	789	1030	1265	1493	1646	1795	2020
652	36	Watt = 490	515	605	623	648	691	778	796	835	1091	1339	1580	1742	1901	2138
688	38	Watt = 517	543	638	657	684	730	821	840	882	1151	1414	1668	1839	2006	2257
724	40	Watt = 544	572	672	692	720	768	864	884	928	1212	1488	1756	1936	2112	2376
760	42	Watt = 571	601	706	727	756	806	907	928	974	1273	1562	1844	2033	2218	2495
796	44	Watt = 598	629	739	761	792	845	950	972	1021	1333	1637	1932	2130	2323	2614
832	46	Watt = 626	658	773	796	828	883	994	1017	1067	1394	1711	2019	2226	2429	2732
868	48	Watt = 653	686	806	830	864	922	1037	1061	1114	1454	1786	2107	2323	2534	2851
904	50	Watt = 680	715	840	865	900	960	1080	1105	1160	1515	1860	2195	2420	2640	2970
940	52	Watt = 707	744	874	900	936	998	1123	1149	1206	1576	1934	2283	2517	2746	3089
976	54	Watt = 734	772	907	934	972	1037	1166	1193	1253	1636	2009	2371	2614	2851	3208
1012	56	Watt = 762	801	941	969	1008	1075	1210	1238	1299	1697	2083	2458	2710	2957	3326
1048	58	Watt = 789	829	974	1003	1044	1114	1253	1282	1346	1757	2158	2546	2807	3062	
1084	60	Watt = 816	858	1008	1038	1080	1152	1296	1326	1392	1818	2232	2634	2904	3168	

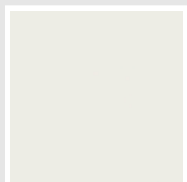
# Colors and Finishes

## STANDARD



Bianco Standard  
Cod. 01

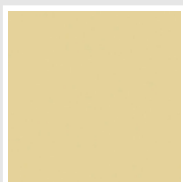
## CLASSIC



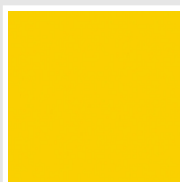
Bianco Edelweiss  
Cod. 34



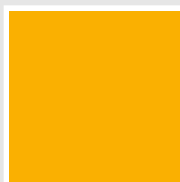
Avorio - RAL 1013  
Cod. 02



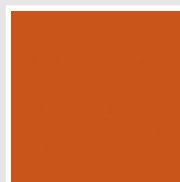
Beige Cream  
Cod. 26



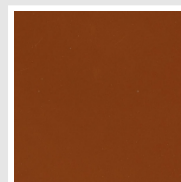
Giallo - RAL 1021  
Cod. 04



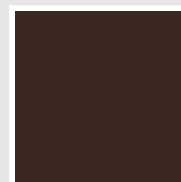
Giallo Melone - RAL  
1028  
Cod. E7



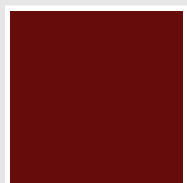
Arancio - RAL 2004  
Cod. 17



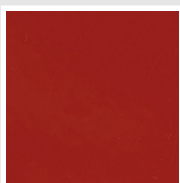
Marrone Ruggine -  
RAL 8004  
Cod. E1



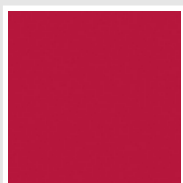
Marrone - RAL 8017  
Cod. 09



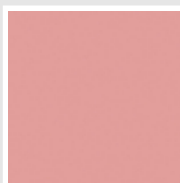
Amaranto - RAL 3003  
Cod. 06



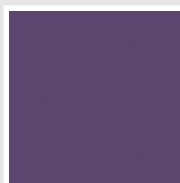
Rosso - RAL 3000  
Cod. 05



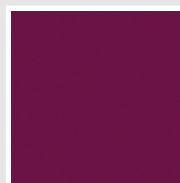
Rosso Fragola - RAL  
3018  
Cod. Y3



Rosa - RAL 3015  
Cod. R2



Lilla Bluastro - RAL  
4005  
Cod. R3



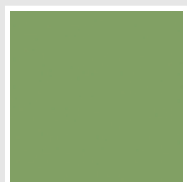
Porpora Traffico -  
RAL 4006  
Cod. R6



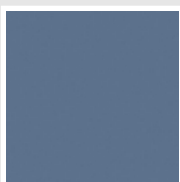
Verde Bosco - RAL  
6005  
Cod. 19



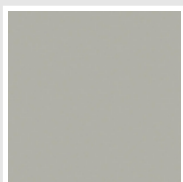
Verde Erba - RAL  
6018  
Cod. N3



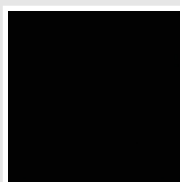
Verde Salvia - RAL  
6021  
Cod. E6



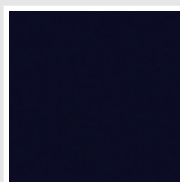
Blu Pastello - RAL  
5024  
Cod. G7



Grigio Manhattan  
Cod. 03

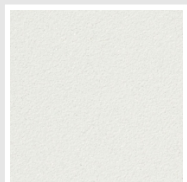


Nero - RAL 9005  
Cod. 10

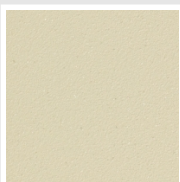


Deep Blue  
Cod. 2F

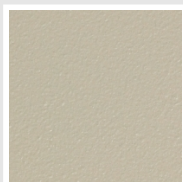
## SPECIAL



Bianco Perla  
Cod. 16



Quartz 1  
Cod. 1C



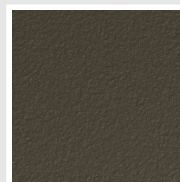
Sablé  
Cod. Y4



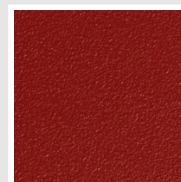
Quartz 2  
Cod. 2C



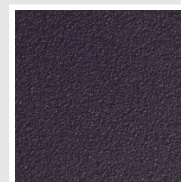
Sunstone  
Cod. 2D



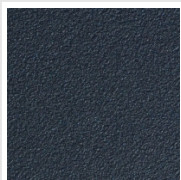
Bruno Tabacco  
Cod. 1B



Flame Red  
Cod. 7D



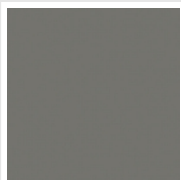
Purple Blue  
Cod. 1D



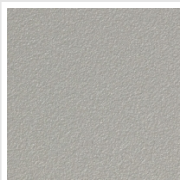
Azurite 3  
Cod. 6C



Grigio Medio  
Cod. 4D



Grigio Titanio  
Metallizzato - RAL  
9023  
Cod. L3



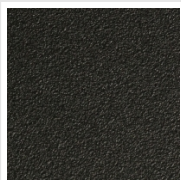
Grigio Perla  
Cod. L6



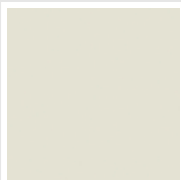
Nero Grafite  
Cod. 18



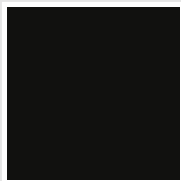
Grigio Quarzo  
Cod. 31



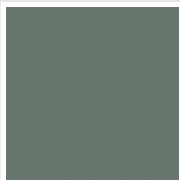
Nero Satinato  
Cod. 30



Bianco Opaco  
Cod. J8



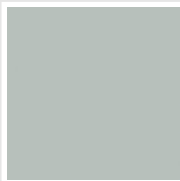
Nero Opaco  
Cod. K1



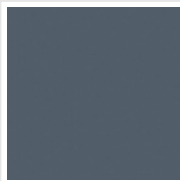
Agave  
Cod. 9N



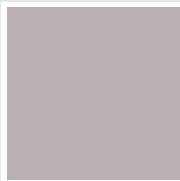
Blu Baltico  
Cod. 1P



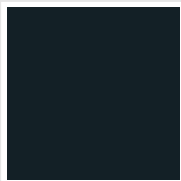
Ghiaccio  
Cod. 3P



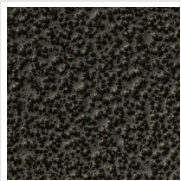
Blu Colomba Opaco  
Cod. 4P



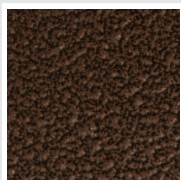
Grigio Chiaro Opaco  
Cod. 8N



Grigio Cenere - Ral  
7021  
Cod. G1



Grigio Martellato  
Cod. 32



Rame Martellato  
Cod. J4

## RAL



Other RAL Colours (following feasibility study)  
Cod. ALTRIRAL

The Colors used in this folder are not considered binding. The different technological painting processes and the materials used for the realization can not have a perfect color match with the delivered product. Irsap company reserves the right to introduce at any time whatever modifications necessary to the improvement of the product.