

Arpa12 Horizontal

A new entry in the IRSAP catalogue, the Arpa 12 completes its already vast modular design radiator range with a model that recalls precious filigree. Slender pipes follow one another in the creation of one single lightweight form. Slightly rounded ends make the product coherent in every detail. Performance is guaranteed also for low-temperature systems, while the range of Irsap colors offers versatility and fantasy for every room in the home or office.



Arpa 12, Horizontal, 30 elements, Hight 544 mm, Lenght 2020 mm, Satin Black

Construction features

manifolds with a 30 mm diameter circular section
tubes made of sheet steel with an 12 mm diameter
manifold threading 1/2" Gas right
maximum working pressure 10 bar
maximum working temperature 95°C

Standard equipment

wall fixing systems with screws and anchors
1/2" blind plug with piper cover kit
1/2" air vent

Certifications



Plus



Technical data

Model	Depth (mm)	Length (mm)	Conn. C. (mm)	Weight (kg)	Capacity (lt)
520	40,0	520	470	0,23	0,06
550	40,0	550	500	0,24	0,06
650	40,0	650	600	0,27	0,07
670	40,0	670	620	0,27	0,07
700	40,0	700	650	0,28	0,07
750	40,0	750	700	0,29	0,07
850	40,0	850	800	0,33	0,08
870	40,0	870	820	0,34	0,08
920	40,0	920	870	0,35	0,09
1220	40,0	1220	1170	0,45	0,10
1520	40,0	1520	1470	0,54	0,13
1820	40,0	1820	1770	0,64	0,15
2020	40,0	2020	1970	0,70	0,17
2220	40,0	2220	2170	0,77	0,18
2520	40,0	2520	2470	0,87	0,20

Thanks to the high performance of Irsap Arpa12 Horizontal radiators, the ideal Δt for low temperature projects is Δt at 30°C.

For Δt different from 50°C use the formula: $Q=Q_n (\Delta t / 50)^n$

Standard equipment

- wall fixing systems with screws and anchors
- 1/2" blind plug with piper cover kit
- 1/2" air vent

Number elements	4	6	8	10	12	14	16	18	20	22	24	26	28	30	32	34	36	38	40	42	44	46	
Btu/h a $\Delta t=50^\circ\text{C}$	754,59	20,91	269,08	31,25	361,42	401,58	442,01	486,31	527,71	571,91	612,08	654,42	698,25	742,48	787,59	833,08	879,23	926,23	973,53	1.033,38	1.093,52	1.154,66	1.216,84

Thermal Power linear mt. Watt a $\Delta t=50^\circ\text{C}$ 221,02 69,73 18,5 36,7 41,5 46,4 51,3 56,2 61,0 65,9 70,8 75,9 80,8 85,6 90,3 94,8 99,1 1.033,21 1.073,71 1.112,61 1.150,21 1.188,44

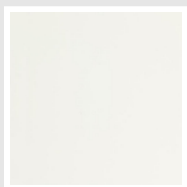
Thermal Power linear mt. Watt a $\Delta t=40^{\circ}C$	165,72	202,32	239,1	275,9	312,8	350,3	387,9	425,8	462,5	499,3	541,1	580,6	619,0	656,4	692,6	727,9	762,1	795,2	827,3	858,3	888,3	913,3
Thermal Power linear mt. Watt a $\Delta t=30^{\circ}C$	14,21	139,7	165,2	190,8	216,6	243,3	270,3	297,6	323,2	348,7	382,3	410,8	438,5	465,6	492,0	517,8	542,9	567,4	591,2	614,2	636,7	652,9
Thermal Power linear mt. Watt a $\Delta t=20^{\circ}C$	7,6	82,8	98,1	113,5	129,0	145,6	162,5	179,7	195,0	210,2	234,4	252,3	269,8	287,0	303,8	320,4	336,7	352,6	368,1	383,3	398,2	406,7
Exponent	1,29	21,28	91,28	5	1,28	1,27	1,26	1,25	1,24	1,24	1,24	1,23	1,19	1,19	1,18	1,18	1,17	1,17	1,16	1,16	1,15	1,17

Data Set

Height (mm) sub>	NÂ° Elements	520	550	650	670	700	750	850	870	920	1220	1520	1820	2020	2220	2520
76	4	Watt = 115	122	144	148	155	166	188	192	203	270	336	402	446	491	557
112	6	Watt = 140	148	175	181	189	202	229	235	248	329	410	491	545	599	680
148	8	Watt = 166	175	207	213	223	239	271	277	293	389	484	580	643	707	803
184	10	Watt = 191	202	239	246	257	275	312	319	338	448	558	668	742	815	925
220	12	Watt = 216	229	270	279	291	312	354	362	383	507	632	757	840	923	1048
256	14	Watt = 242	256	302	311	325	348	395	404	427	567	706	846	939	1032	1171
292	16	Watt = 267	282	334	344	359	385	436	447	472	626	780	934	1037	1140	1294
328	18	Watt = 292	309	365	377	393	422	478	489	517	686	854	1023	1135	1248	1417
364	20	Watt = 318	336	397	409	428	458	519	531	562	745	928	1112	1234	1356	1539
400	22	Watt = 343	363	429	442	462	495	561	574	607	805	1003	1200	1332	1464	1662
436	24	Watt = 368	390	460	475	496	531	602	616	652	864	1077	1289	1431	1572	1785
472	26	Watt = 395	418	494	509	532	569	645	661	699	926	1154	1382	1534	1686	1913
508	28	Watt = 421	445	526	542	566	607	687	704	744	987	1229	1472	1634	1795	2038
544	30	Watt = 445	471	557	574	600	643	728	745	788	1045	1302	1559	1731	1902	2159
580	32	Watt = 470	497	587	605	632	677	768	786	831	1102	1373	1644	1824	2005	2276
616	34	Watt = 493	521	616	635	664	711	806	825	872	1157	1441	1725	1915	2105	2389
652	36	Watt = 515	545	644	664	694	743	843	862	912	1209	1507	1804	2002	2201	2498
688	38	Watt = 537	568	672	692	723	775	878	899	951	1261	1570	1880	2087	2294	2604
724	40	Watt = 558	591	698	719	752	805	913	934	988	1310	1632	1954	2169	2384	2706
760	42	Watt = 579	612	723	745	779	834	946	968	1024	1357	1691	2025	2247	2470	2804
796	44	Watt = 598	633	748	771	805	863	978	1001	1058	1403	1748	2093	2323	2553	2899
832	46	Watt = 617	652	771	795	830	890	1008	1032	1091	1447	1803	2159	2396	2634	2989
868	48	Watt = 635	672	794	818	855	916	1038	1062	1123	1490	1856	2222	2467	2711	3077
904	50	Watt = 652	690	815	841	878	941	1066	1091	1154	1530	1907	2283	2534	2785	3161
940	52	Watt = 669	708	836	862	901	965	1094	1119	1184	1570	1956	2342	2599	2856	3242
976	54	Watt = 685	725	856	883	922	988	1120	1146	1212	1607	2002	2397	2661	2924	3320
1012	56	Watt = 700	741	875	902	943	1010	1145	1172	1239	1643	2047	2451	2721	2990	3394
1048	58	Watt = 715	756	894	921	962	1031	1169	1196	1265	1678	2090	2502	2778	3052	
1084	60	Watt = 729	771	911	939	981	1052	1192	1220	1290	1710	2131	2552	2832	3112	

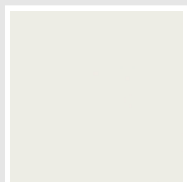
Colors and Finishes

STANDARD

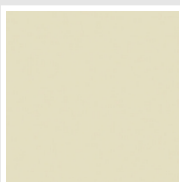


Bianco Standard
Cod. 01

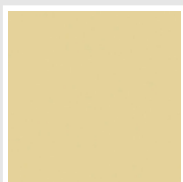
CLASSIC



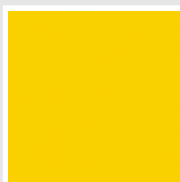
Bianco Edelweiss
Cod. 34



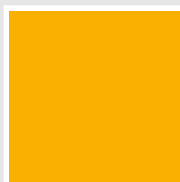
Avorio - RAL 1013
Cod. 02



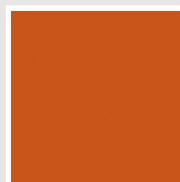
Beige Cream
Cod. 26



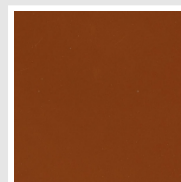
Giallo - RAL 1021
Cod. 04



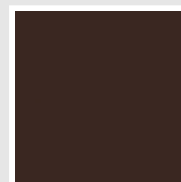
Giallo Melone - RAL
1028
Cod. E7



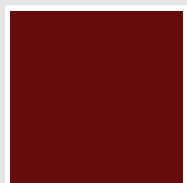
Arancio - RAL 2004
Cod. 17



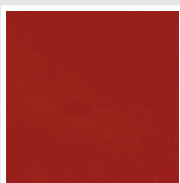
Marrone Ruggine -
RAL 8004
Cod. E1



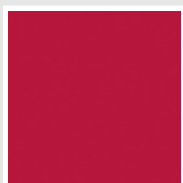
Marrone - RAL 8017
Cod. 09



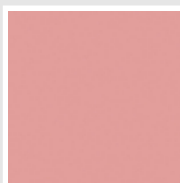
Amaranto - RAL 3003
Cod. 06



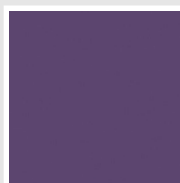
Rosso - RAL 3000
Cod. 05



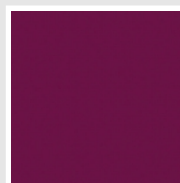
Rosso Fragola - RAL
3018
Cod. Y3



Rosa - RAL 3015
Cod. R2



Lilla Bluastro - RAL
4005
Cod. R3



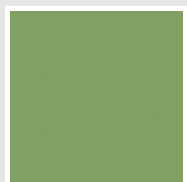
Porpora Traffico -
RAL 4006
Cod. R6



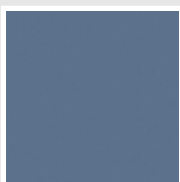
Verde Bosco - RAL
6005
Cod. 19



Verde Erba - RAL
6018
Cod. N3



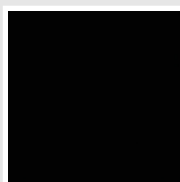
Verde Salvia - RAL
6021
Cod. E6



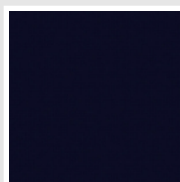
Blu Pastello - RAL
5024
Cod. G7



Grigio Manhattan
Cod. 03

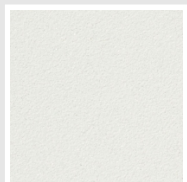


Nero - RAL 9005
Cod. 10

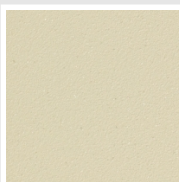


Deep Blue
Cod. 2F

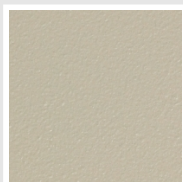
SPECIAL



Bianco Perla
Cod. 16



Quartz 1
Cod. 1C



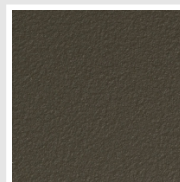
Sablé
Cod. Y4



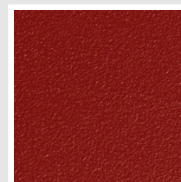
Quartz 2
Cod. 2C



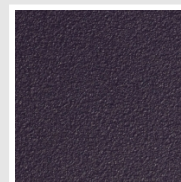
Sunstone
Cod. 2D



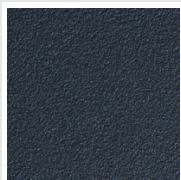
Bruno Tabacco
Cod. 1B



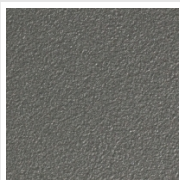
Flame Red
Cod. 7D



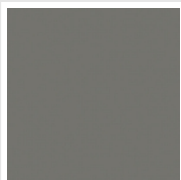
Purple Blue
Cod. 1D



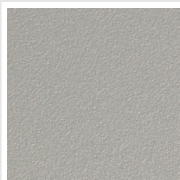
Azurite 3
Cod. 6C



Grigio Medio
Cod. 4D



Grigio Titanio
Metallizzato - RAL
9023
Cod. L3



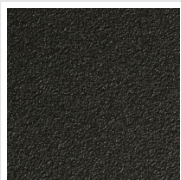
Grigio Perla
Cod. L6



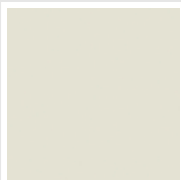
Nero Grafite
Cod. 18



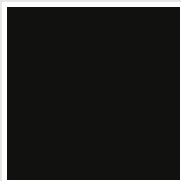
Grigio Quarzo
Cod. 31



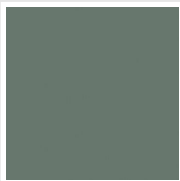
Nero Satinato
Cod. 30



Bianco Opaco
Cod. J8



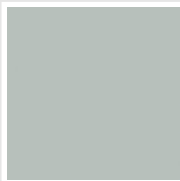
Nero Opaco
Cod. K1



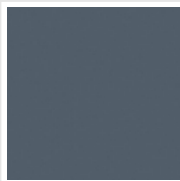
Agave
Cod. 9N



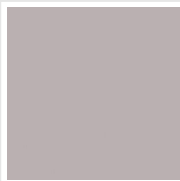
Blu Baltico
Cod. 1P



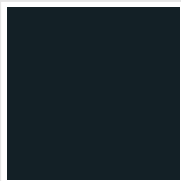
Ghiaccio
Cod. 3P



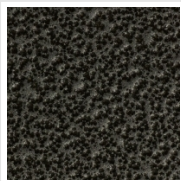
Blu Colomba Opaco
Cod. 4P



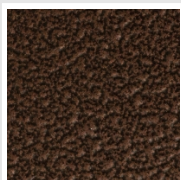
Grigio Chiaro Opaco
Cod. 8N



Grigio Cenere - Ral
7021
Cod. G1



Grigio Martellato
Cod. 32



Rame Martellato
Cod. J4

RAL



Other RAL Colours (following feasibility study)
Cod. ALTRIRAL

The Colors used in this folder are not considered binding. The different technological painting processes and the materials used for the realization can not have a perfect color match with the delivered product. Irsap company reserves the right to introduce at any time whatever modifications necessary to the improvement of the product.