

Arpa12_2 Vertical

A new entry in the IRSAP catalogue, the Arpa 12 completes its already vast modular design radiator range with a model that recalls precious filigree. Slender pipes follow one another in the creation of one single lightweight form. Slightly rounded ends make the product coherent in every detail. Performance is guaranteed also for low-temperature systems, while the range of Irsap colors offers versatility and fantasy for every room in the home or office.



Arpa12 2, Vertical, 30 elements, Hight 1820 mm, Lenght 544 mm, Quartz 2

Construction features

manifolds with a 30 mm diameter circular section
tubes made of sheet steel with an 12 mm diameter
manifold threading 1/2" Gas right
maximum working pressure 10 bar
maximum working temperature 95°C

Standard equipment

wall fixing systems with screws and anchors
1/2" blind plug with piper cover kit
1/2" air vent

Certifications



Plus



Technical data

Model	Depth (mm)	Height (mm)	Conn. C. (mm)	Weight (kg)	Capacity (lt)	$\Delta t=50^{\circ}\text{C}$ (btu/h)	$\Delta t=50^{\circ}\text{C}$ (kcal/h)	$\Delta t=50^{\circ}\text{C}$ (Watt)	$\Delta t=40^{\circ}\text{C}$ (Watt)	$\Delta t=30^{\circ}\text{C}$ (Watt)	$\Delta t=20^{\circ}\text{C}$ (Watt)	Exponent
520	50,0	520	470	0,39	0,10	71,3	18,0	20,9	15,7	10,8	6,4	1,290
550	50,0	550	500	0,41	0,10	74,7	18,8	21,9	16,4	11,3	6,7	1,294
650	50,0	650	600	0,47	0,11	86,3	21,8	25,3	18,9	13,0	7,7	1,304
670	50,0	670	620	0,49	0,12	88,4	22,3	25,9	19,4	13,3	7,8	1,306
700	50,0	700	650	0,51	0,12	91,8	23,1	26,9	20,1	13,8	8,1	1,309
750	50,0	750	700	0,54	0,13	97,6	24,6	28,6	21,3	14,6	8,6	1,315
850	50,0	850	800	0,60	0,14	108,5	27,4	31,8	23,7	16,2	9,4	1,325
870	50,0	870	820	0,62	0,15	110,9	27,9	32,5	24,2	16,5	9,6	1,327
920	50,0	920	870	0,65	0,15	116,0	29,2	34,0	25,2	17,2	10,0	1,333
1220	50,0	1220	1170	0,94	0,20	148,1	37,3	43,4	32,3	22,0	12,8	1,328
1520	50,0	1520	1470	1,03	0,24	179,1	45,1	52,5	39,1	26,7	15,6	1,324
1820	50,0	1820	1770	1,22	0,28	209,8	52,9	61,5	45,8	31,3	18,3	1,321
2020	50,0	2020	1970	1,35	0,31	229,6	57,9	67,3	50,1	34,3	20,1	1,319
2220	50,0	2220	2170	1,48	0,34	249,8	63,0	73,2	54,6	37,4	21,9	1,317
2520	50,0	2520	2470	1,67	0,39	279,1	70,3	81,8	61,0	41,8	24,5	1,314

Thanks to the high performance of Irsap Arpa12_2 Vertical radiators, the ideal Δt for low temperature projects is Δt at 30°C .

For Δt different from 50°C use the formula: $Q=Q_n (\Delta t / 50)^n$

Standard equipment

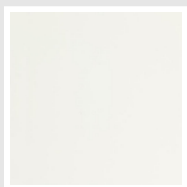
- wall fixing systems with screws and anchors
- 1/2" blind plug with piper cover kit
- 1/2" air vent

Data Set

Length (mm) sub>	NÂ° Elements	520	550	650	670	700	750	850	870	920	1220	1520	1820	2020	2220	2520
76	4	Watt = 84	88	101	104	108	114	127	130	136	174	210	246	269	293	327
112	6	Watt = 125	131	152	155	161	172	191	195	204	260	315	369	404	439	491
148	8	Watt = 167	175	202	207	215	229	254	260	272	347	420	492	538	586	654
184	10	Watt = 209	219	253	259	269	286	318	325	340	434	525	615	673	732	818
220	12	Watt = 251	263	304	311	323	343	382	390	408	521	630	738	808	878	982
256	14	Watt = 293	307	354	363	377	400	445	455	476	608	735	861	942	1025	1145
292	16	Watt = 334	350	405	414	430	458	509	520	544	694	840	984	1077	1171	1309
328	18	Watt = 376	394	455	466	484	515	572	585	612	781	945	1107	1211	1318	1472
364	20	Watt = 418	438	506	518	538	572	636	650	680	868	1050	1230	1346	1464	1636
400	22	Watt = 460	482	557	570	592	629	700	715	748	955	1155	1353	1481	1610	1800
436	24	Watt = 502	526	607	622	646	686	763	780	816	1042	1260	1476	1615	1757	1963
472	26	Watt = 543	569	658	673	699	744	827	845	884	1128	1365	1599	1750	1903	2127
508	28	Watt = 585	613	708	725	753	801	890	910	952	1215	1470	1722	1884	2050	2290
544	30	Watt = 627	657	759	777	807	858	954	975	1020	1302	1575	1845	2019	2196	2454
580	32	Watt = 669	701	810	829	861	915	1018	1040	1088	1389	1680	1968	2154	2342	2618
616	34	Watt = 711	745	860	881	915	972	1081	1105	1156	1476	1785	2091	2288	2489	2781
652	36	Watt = 752	788	911	932	968	1030	1145	1170	1224	1562	1890	2214	2423	2635	2945
688	38	Watt = 794	832	961	984	1022	1087	1208	1235	1292	1649	1995	2337	2557	2782	
724	40	Watt = 836	876	1012	1036	1076	1144	1272	1300	1360	1736	2100	2460	2692	2928	
760	42	Watt = 878	920	1063	1088	1130	1201	1336	1365	1428	1823	2205	2583	2827	3074	
796	44	Watt = 920	964	1113	1140	1184	1258	1399	1430	1496	1910	2310	2706	2961	3221	
832	46	Watt = 961	1007	1164	1191	1237	1316	1463	1495	1564	1996	2415	2829	3096		
868	48	Watt = 1003	1051	1214	1243	1291	1373	1526	1560	1632	2083	2520	2952	3230		
904	50	Watt = 1045	1095	1265	1295	1345	1430	1590	1625	1700	2170	2625	3075	3365		
940	52	Watt = 1087	1139	1316	1347	1399	1487	1654	1690	1768	2257	2730	3198			
976	54	Watt = 1129	1183	1366	1399	1453	1544	1717	1755	1836	2344	2835	3321			
1012	56	Watt = 1170	1226	1417	1450	1506	1602	1781	1820	1904	2430	2940	3444			
1048	58	Watt = 1212	1270	1467	1502	1560	1659	1844	1885	1972	2517	3045				
1084	60	Watt = 1254	1314	1518	1554	1614	1716	1908	1950	2040	2604	3150				

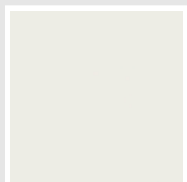
Colors and Finishes

STANDARD



Bianco Standard
Cod. 01

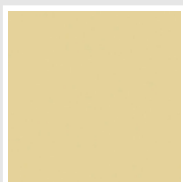
CLASSIC



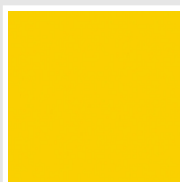
Bianco Edelweiss
Cod. 34



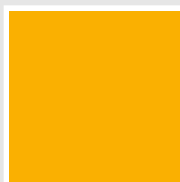
Avorio - RAL 1013
Cod. 02



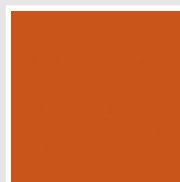
Beige Cream
Cod. 26



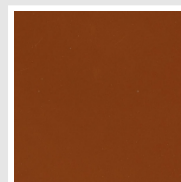
Giallo - RAL 1021
Cod. 04



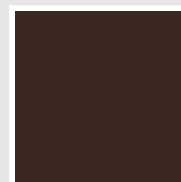
Giallo Melone - RAL
1028
Cod. E7



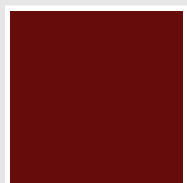
Arancio - RAL 2004
Cod. 17



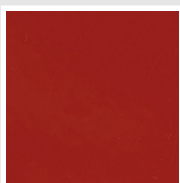
Marrone Ruggine -
RAL 8004
Cod. E1



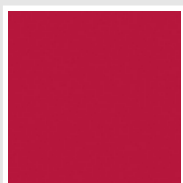
Marrone - RAL 8017
Cod. 09



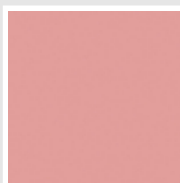
Amaranto - RAL 3003
Cod. 06



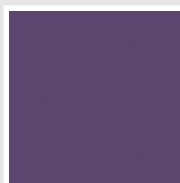
Rosso - RAL 3000
Cod. 05



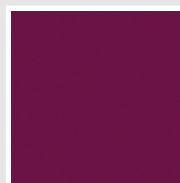
Rosso Fragola - RAL
3018
Cod. Y3



Rosa - RAL 3015
Cod. R2



Lilla Bluastro - RAL
4005
Cod. R3



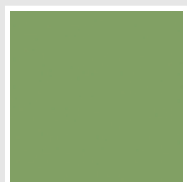
Porpora Traffico -
RAL 4006
Cod. R6



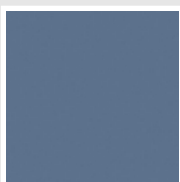
Verde Bosco - RAL
6005
Cod. 19



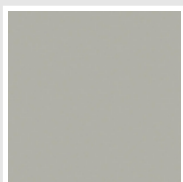
Verde Erba - RAL
6018
Cod. N3



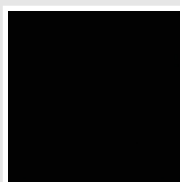
Verde Salvia - RAL
6021
Cod. E6



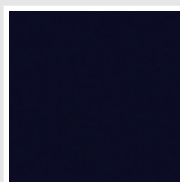
Blu Pastello - RAL
5024
Cod. G7



Grigio Manhattan
Cod. 03

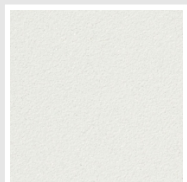


Nero - RAL 9005
Cod. 10

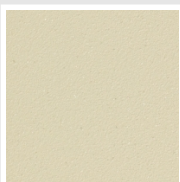


Deep Blue
Cod. 2F

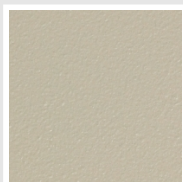
SPECIAL



Bianco Perla
Cod. 16



Quartz 1
Cod. 1C



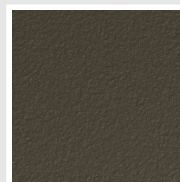
Sablé
Cod. Y4



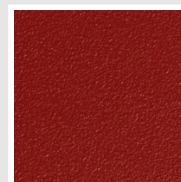
Quartz 2
Cod. 2C



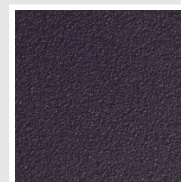
Sunstone
Cod. 2D



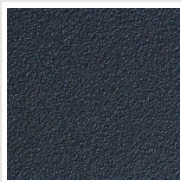
Bruno Tabacco
Cod. 1B



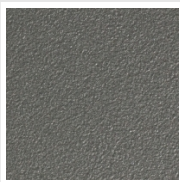
Flame Red
Cod. 7D



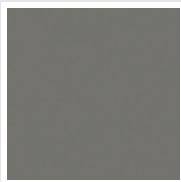
Purple Blue
Cod. 1D



Azurite 3
Cod. 6C



Grigio Medio
Cod. 4D



Grigio Titanio
Metallizzato - RAL
9023
Cod. L3



Grigio Perla
Cod. L6



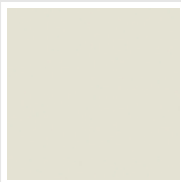
Nero Grafite
Cod. 18



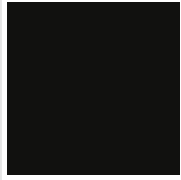
Grigio Quarzo
Cod. 31



Nero Satinato
Cod. 30



Bianco Opaco
Cod. J8



Nero Opaco
Cod. K1



Agave
Cod. 9N



Blu Baltico
Cod. 1P



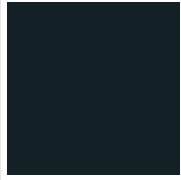
Ghiaccio
Cod. 3P



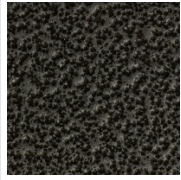
Blu Colomba Opaco
Cod. 4P



Grigio Chiaro Opaco
Cod. 8N



Grigio Cenere - Ral
7021
Cod. G1



Grigio Martellato
Cod. 32



Rame Martellato
Cod. J4

RAL



Other RAL Colours (following feasibility study)
Cod. ALTRIRAL

The Colors used in this folder are not considered binding. The different technological painting processes and the materials used for the realization can not have a perfect color match with the delivered product. Irsap company reserves the right to introduce at any time whatever modifications necessary to the improvement of the product.