

Arpa12 Vertical chrome plated

The range of ARPA12 radiators is divided into: vertical and horizontal, double and single, with elegant and typically wall mountings in the style of Irsap in the same color as the radiator, painted and finished in all their parts. Arpa 12, in single-rank models, is also available in the chrome version.



Arpa12 Cromato, Vertical, 30 elements, Hight 2020 mm, Lenght 544 mm, Chrome-plated

Construction features

manifolds with a 30 mm diameter circular section
tubes made of sheet steel with an 12 mm diameter
manifold threading 1/2" Gas right
maximum working pressure 10 bar
maximum working temperature 95°C

Standard equipment

wall fixing systems with screws and anchors
1/2" blind plug with piper cover kit
1/2" air vent

Certifications



Plus



Technical data

Model	Depth (mm)	Height (mm)	Conn. C. (mm)	Weight (kg)	Capacity (lt)	$\Delta t=50^{\circ}\text{C}$ (btu/h)	$\Delta t=50^{\circ}\text{C}$ (kcal/h)	$\Delta t=50^{\circ}\text{C}$ (Watt)	$\Delta t=40^{\circ}\text{C}$ (Watt)	$\Delta t=30^{\circ}\text{C}$ (Watt)	$\Delta t=20^{\circ}\text{C}$ (Watt)	Exponent
520	40,0	520	470	0,23	0,06	33,8	8,5	9,9	7,5	5,2	3,1	1,271
550	40,0	550	500	0,24	0,06	35,8	9,0	10,5	7,9	5,5	3,3	1,273
650	40,0	650	600	0,27	0,07	41,6	10,5	12,2	9,2	6,3	3,8	1,278
670	40,0	670	620	0,27	0,07	42,7	10,8	12,5	9,4	6,5	3,9	1,279
700	40,0	700	650	0,28	0,07	44,4	11,2	13,0	9,8	6,8	4,0	1,280
750	40,0	750	700	0,29	0,07	47,1	11,9	13,8	10,4	7,2	4,3	1,283
850	40,0	850	800	0,33	0,08	52,9	13,3	15,5	11,6	8,0	4,8	1,288
870	40,0	870	820	0,34	0,08	54,3	13,7	15,9	11,9	8,2	4,9	1,289
920	40,0	920	870	0,35	0,09	57,0	14,4	16,7	12,5	8,6	5,1	1,292
1220	40,0	1220	1170	0,45	0,10	74,0	18,7	21,7	16,2	11,1	6,6	1,305
1520	40,0	1520	1470	0,54	0,13	91,1	23,0	26,7	19,9	13,6	8,0	1,318
1820	40,0	1820	1770	0,64	0,15	108,5	27,4	31,8	23,7	16,2	9,5	1,320
2020	40,0	2020	1970	0,70	0,17	120,1	30,3	35,2	26,2	17,9	10,5	1,321

Thanks to the high performance of Irsap Arpa12 Vertical Chrome-plated radiators, the ideal Δt for low temperature projects is Δt at 30°C .

For Δt different from 50°C use the formula: $Q=Q_n (\Delta t / 50)^n$

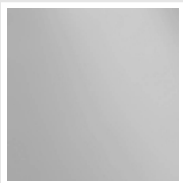
Standard equipment

- wall fixing systems with screws and anchors
- 1/2" blind plug with piper cover kit
- 1/2" air vent

Data Set

Length (mm) sub>	NÂ° Elements	520	550	650	670	700	750	850	870	920	1220	1520	1820	2020
76	4	Watt = 40	42	49	50	52	55	62	64	67	87	107	127	141
112	6	Watt = 59	63	73	75	78	83	93	95	100	130	160	191	211
148	8	Watt = 79	84	98	100	104	110	124	127	134	174	214	254	282
184	10	Watt = 99	105	122	125	130	138	155	159	167	217	267	318	352
220	12	Watt = 119	126	146	150	156	166	186	191	200	260	320	382	422
256	14	Watt = 139	147	171	175	182	193	217	223	234	304	374	445	493
292	16	Watt = 158	168	195	200	208	221	248	254	267	347	427	509	563
328	18	Watt = 178	189	220	225	234	248	279	286	301	391	481	572	634
364	20	Watt = 198	210	244	250	260	276	310	318	334	434	534	636	704
400	22	Watt = 218	231	268	275	286	304	341	350	367	477	587	700	774
436	24	Watt = 238	252	293	300	312	331	372	382	401	521	641	763	845
472	26	Watt = 257	273	317	325	338	359	403	413	434	564	694	827	915
508	28	Watt = 277	294	342	350	364	386	434	445	468	608	748	890	986
544	30	Watt = 297	315	366	375	390	414	465	477	501	651	801	954	1056
580	32	Watt = 317	336	390	400	416	442	496	509	534	694	854	1018	1126
616	34	Watt = 337	357	415	425	442	469	527	541	568	738	908	1081	1197
652	36	Watt = 356	378	439	450	468	497	558	572	601	781	961	1145	1267
688	38	Watt = 376	399	464	475	494	524	589	604	635	825	1015	1208	1338
724	40	Watt = 396	420	488	500	520	552	620	636	668	868	1068	1272	1408
760	42	Watt = 416	441	512	525	546	580	651	668	701	911	1121	1336	1478
796	44	Watt = 436	462	537	550	572	607	682	700	735	955	1175	1399	1549
832	46	Watt = 455	483	561	575	598	635	713	731	768	998	1228	1463	1619
868	48	Watt = 475	504	586	600	624	662	744	763	802	1042	1282	1526	1690
904	50	Watt = 495	525	610	625	650	690	775	795	835	1085	1335	1590	1760
940	52	Watt = 515	546	634	650	676	718	806	827	868				
976	54	Watt = 535	567	659	675	702	745	837	859	902				
1012	56	Watt = 554	588	683	700	728	773	868	890	935				
1048	58	Watt = 574	609	708	725	754	800	899	922	969				
1084	60	Watt = 594	630	732	750	780	828	930	954	1002				

FINISHES



Cromato

Cod. 50

The Colors used in this folder are not considered binding. The different technological painting processes and the materials used for the realization can not have a perfect color match with the delivered product. Irsap company reserves the right to introduce at any time whatever modifications necessary to the improvement of the product.