

Arpa18 Vertical

Slightly rounded ends make the product coherent in every detail. Performance is guaranteed also for low-temperature systems, while the range of Irsap colors offers versatility and fantasy for every room in the home or office.



Arpa18, Vertical, 20 elements, Hight 2020 mm, Lenght 364 mm, Quartz 1

Construction features

manifolds with a 30 mm diameter circular section
tubes made of sheet steel with an 18 mm diameter
manifold threading 1/2" Gas right
maximum working pressure 10 bar
maximum working temperature 95°C

Standard equipment

wall fixing systems with screws and anchors
1/2" blind plug with piper cover kit
1/2" air vent

Certifications



Plus



Technical data

Model	Depth (mm)	Height (mm)	Conn. C. (mm)	Weight (kg)	Capacity (lt)	$\Delta t=50^{\circ}\text{C}$ (btu/h)	$\Delta t=50^{\circ}\text{C}$ (kcal/h)	$\Delta t=50^{\circ}\text{C}$ (Watt)	$\Delta t=40^{\circ}\text{C}$ (Watt)	$\Delta t=30^{\circ}\text{C}$ (Watt)	$\Delta t=20^{\circ}\text{C}$ (Watt)	Exponent
520	46,0	520	470	0,30	0,13	68,6	17,3	20,1	15,1	10,4	6,2	1,280
550	46,0	550	500	0,32	0,13	72,3	18,2	21,2	15,9	11,0	6,6	1,281
650	46,0	650	600	0,36	0,15	84,3	21,2	24,7	18,6	12,8	7,6	1,282
670	46,0	670	620	0,37	0,16	86,7	21,8	25,4	19,1	13,2	7,8	1,282
700	46,0	700	650	0,39	0,16	90,4	22,8	26,5	19,9	13,8	8,2	1,283
750	46,0	750	700	0,41	0,17	96,2	24,2	28,2	21,2	14,6	8,7	1,284
850	46,0	850	800	0,45	0,19	108,2	27,3	31,7	23,8	16,4	9,8	1,285
870	46,0	870	820	0,46	0,20	110,2	27,8	32,3	24,2	16,8	9,9	1,285
920	46,0	920	870	0,49	0,20	116,3	29,3	34,1	25,6	17,7	10,5	1,286
1220	46,0	1220	1170	0,62	0,26	150,5	37,9	44,1	33,2	23,0	13,7	1,277
1520	46,0	1520	1470	0,76	0,32	184,2	46,4	54,0	40,7	28,2	16,9	1,269
1820	46,0	1820	1770	0,90	0,38	217,3	54,8	63,7	48,0	33,2	19,8	1,273
2020	46,0	2020	1970	0,99	0,42	239,2	60,3	70,1	52,7	36,5	21,8	1,276
2220	46,0	2220	2170	1,08	0,46	260,7	65,7	76,4	57,4	39,7	23,7	1,279
2520	46,0	2520	2470	1,22	0,52	292,4	73,7	85,7	64,3	44,5	26,4	1,284

Thanks to the high performance of Irsap Arpa18 Vertical radiators, the ideal Δt for low temperature projects is Δt at 30°C .

For Δt different from 50°C use the formula: $Q=Q_n (\Delta t / 50)^n$

Standard equipment

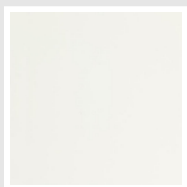
- wall fixing systems with screws and anchors
- 1/2" blind plug with piper cover kit
- 1/2" air vent

Data Set

Length (mm) sub>	NÂ° Elements	520	550	650	670	700	750	850	870	920	1220	1520	1820	2020	2220	2520
109	4	Watt = 80	85	99	102	106	113	127	129	136	176	216	255	280	306	343
163	6	Watt = 121	127	148	152	159	169	190	194	205	265	324	382	421	458	514
217	8	Watt = 161	170	198	203	212	226	254	258	273	353	432	510	561	611	686
271	10	Watt = 201	212	247	254	265	282	317	323	341	441	540	637	701	764	857
325	12	Watt = 241	254	296	305	318	338	380	388	409	529	648	764	841	917	1028
379	14	Watt = 281	297	346	356	371	395	444	452	477	617	756	892	981	1070	1200
433	16	Watt = 322	339	395	406	424	451	507	517	546	706	864	1019	1122	1222	1371
487	18	Watt = 362	382	445	457	477	508	571	581	614	794	972	1147	1262	1375	1543
541	20	Watt = 402	424	494	508	530	564	634	646	682	882	1080	1274	1402	1528	1714
595	22	Watt = 442	466	543	559	583	620	697	711	750	970	1188	1401	1542	1681	1885
649	24	Watt = 482	509	593	610	636	677	761	775	818	1058	1296	1529	1682	1834	2057
703	26	Watt = 523	551	642	660	689	733	824	840	887	1147	1404	1656	1823	1986	2228
757	28	Watt = 563	594	692	711	742	790	888	904	955	1235	1512	1784	1963	2139	2400
811	30	Watt = 603	636	741	762	795	846	951	969	1023	1323	1620	1911	2103	2292	2571
865	32	Watt = 643	678	790	813	848	902	1014	1034	1091	1411	1728	2038	2243	2445	2742
919	34	Watt = 683	721	840	864	901	959	1078	1098	1159	1499	1836	2166	2383	2598	2914
973	36	Watt = 724	763	889	914	954	1015	1141	1163	1228	1588	1944	2293	2524	2750	3085
1027	38	Watt = 764	806	939	965	1007	1072	1205	1227	1296	1676	2052	2421	2664	2903	3257
1081	40	Watt = 804	848	988	1016	1060	1128	1268	1292	1364	1764	2160	2548	2804	3056	
1135	42	Watt = 844	890	1037	1067	1113	1184	1331	1357	1432	1852	2268	2675	2944	3209	
1189	44	Watt = 884	933	1087	1118	1166	1241	1395	1421	1500	1940	2376	2803	3084	3362	
1243	46	Watt = 925	975	1136	1168	1219	1297	1458	1486	1569	2029	2484	2930	3225		
1297	48	Watt = 965	1018	1186	1219	1272	1354	1522	1550	1637	2117	2592	3058	3365		
1351	50	Watt = 1005	1060	1235	1270	1325	1410	1585	1615	1705	2205	2700	3185			
1405	52	Watt = 1045	1102	1284	1321	1378	1466	1648	1680	1773	2293	2808	3312			
1459	54	Watt = 1085	1145	1334	1372	1431	1523	1712	1744	1841	2381	2916				
1513	56	Watt = 1126	1187	1383	1422	1484	1579	1775	1809	1910	2470	3024				
1567	58	Watt = 1166	1230	1433	1473	1537	1636	1839	1873	1978	2558	3132				
1621	60	Watt = 1206	1272	1482	1524	1590	1692	1902	1938	2046	2646	3240				

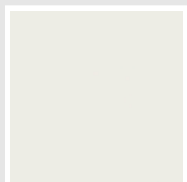
Colors and Finishes

STANDARD



Bianco Standard
Cod. 01

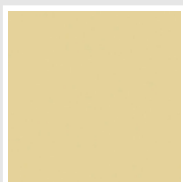
CLASSIC



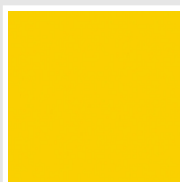
Bianco Edelweiss
Cod. 34



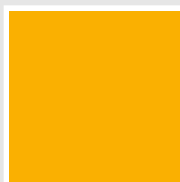
Avorio - RAL 1013
Cod. 02



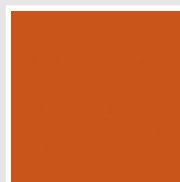
Beige Cream
Cod. 26



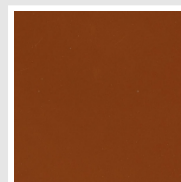
Giallo - RAL 1021
Cod. 04



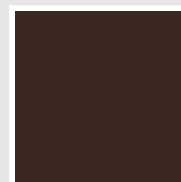
Giallo Melone - RAL
1028
Cod. E7



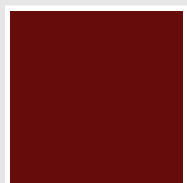
Arancio - RAL 2004
Cod. 17



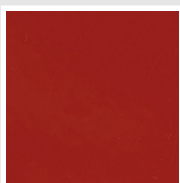
Marrone Ruggine -
RAL 8004
Cod. E1



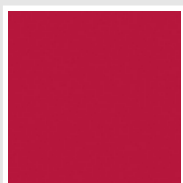
Marrone - RAL 8017
Cod. 09



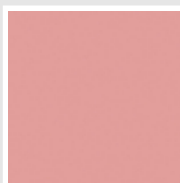
Amaranto - RAL 3003
Cod. 06



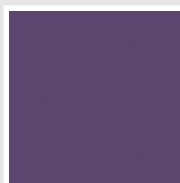
Rosso - RAL 3000
Cod. 05



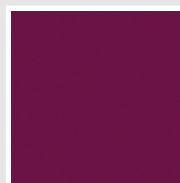
Rosso Fragola - RAL
3018
Cod. Y3



Rosa - RAL 3015
Cod. R2



Lilla Bluastro - RAL
4005
Cod. R3



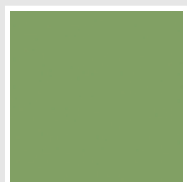
Porpora Traffico -
RAL 4006
Cod. R6



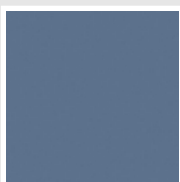
Verde Bosco - RAL
6005
Cod. 19



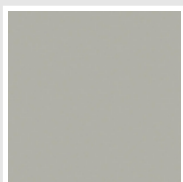
Verde Erba - RAL
6018
Cod. N3



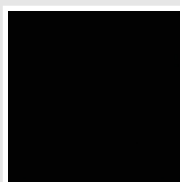
Verde Salvia - RAL
6021
Cod. E6



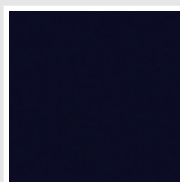
Blu Pastello - RAL
5024
Cod. G7



Grigio Manhattan
Cod. 03

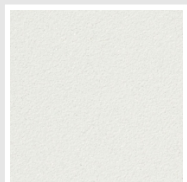


Nero - RAL 9005
Cod. 10

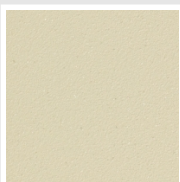


Deep Blue
Cod. 2F

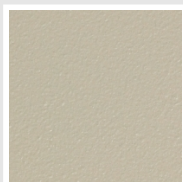
SPECIAL



Bianco Perla
Cod. 16



Quartz 1
Cod. 1C



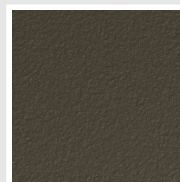
Sablé
Cod. Y4



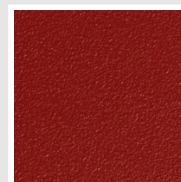
Quartz 2
Cod. 2C



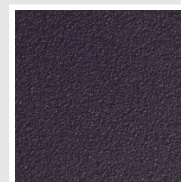
Sunstone
Cod. 2D



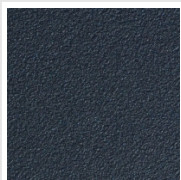
Bruno Tabacco
Cod. 1B



Flame Red
Cod. 7D



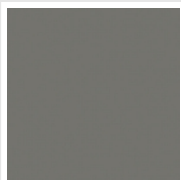
Purple Blue
Cod. 1D



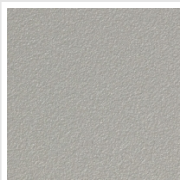
Azurite 3
Cod. 6C



Grigio Medio
Cod. 4D



Grigio Titanio
Metallizzato - RAL
9023
Cod. L3



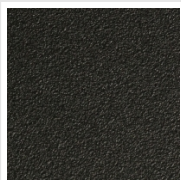
Grigio Perla
Cod. L6



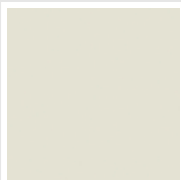
Nero Grafite
Cod. 18



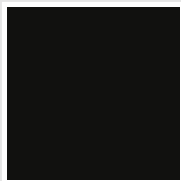
Grigio Quarzo
Cod. 31



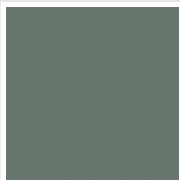
Nero Satinato
Cod. 30



Bianco Opaco
Cod. J8



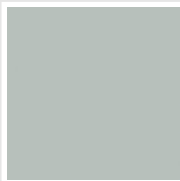
Nero Opaco
Cod. K1



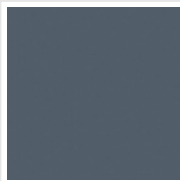
Agave
Cod. 9N



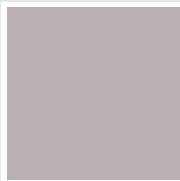
Blu Baltico
Cod. 1P



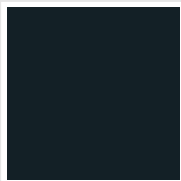
Ghiaccio
Cod. 3P



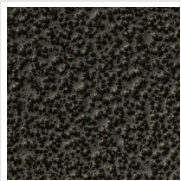
Blu Colomba Opaco
Cod. 4P



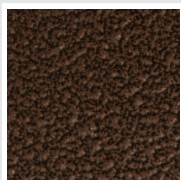
Grigio Chiaro Opaco
Cod. 8N



Grigio Cenere - Ral
7021
Cod. G1



Grigio Martellato
Cod. 32



Rame Martellato
Cod. J4

RAL



Other RAL Colours (following feasibility study)
Cod. ALTRIRAL

The Colors used in this folder are not considered binding. The different technological painting processes and the materials used for the realization can not have a perfect color match with the delivered product. Irsap company reserves the right to introduce at any time whatever modifications necessary to the improvement of the product.