

# Arpa18 Horizontal

*Slightly rounded ends make the product coherent in every detail. Performance is guaranteed also for low-temperature systems, while the range of Irsap colors offers versatility and fantasy for every room in the home or office.*



Arpa18, Horizontal, 20 elements, Hight 364 mm, Lenght 2020 mm, Quartz 1

## **Construction features**

manifolds with a 30 mm diameter circular section  
tubes made of sheet steel with an 18 mm diameter  
manifold threading 1/2" Gas right  
maximum working pressure 10 bar  
maximum working temperature 95°C

## **Standard equipment**

wall fixing systems with screws and anchors  
1/2" blind plug with piper cover kit  
1/2" air vent

## Certifications



## Plus



## Technical data

Model	Depth (mm)	Length (mm)	Conn. C. (mm)	Weight (kg)	Capacity (lt)
520	46,0	520	470	0,30	0,13
550	46,0	550	500	0,32	0,13
650	46,0	650	600	0,36	0,15
670	46,0	670	620	0,37	0,16
700	46,0	700	650	0,39	0,16
750	46,0	750	700	0,41	0,17
850	46,0	850	800	0,45	0,19
870	46,0	870	820	0,46	0,20
920	46,0	920	870	0,49	0,20
1220	46,0	1220	1170	0,62	0,26
1520	46,0	1520	1470	0,76	0,32
1820	46,0	1820	1770	0,90	0,38
2020	46,0	2020	1970	0,99	0,42
2220	46,0	2220	2170	1,08	0,46
2520	46,0	2520	2470	1,22	0,52

Thanks to the high performance of Irsap Arpa18 Horizontal radiators, the ideal  $\Delta t$  for low temperature projects is  $\Delta t$  at 30°C.

For  $\Delta t$  different from 50°C use the formula:  $Q=Q_n (\Delta t / 50)^n$

### Standard equipment

- wall fixing systems with screws and anchors
- 1/2" blind plug with piper cover kit
- 1/2" air vent

Number elements	4	6	8	10	12	14	16	18	20	22	24	26	28	30	32	34	36	38	40	42	44	46
-----------------	---	---	---	----	----	----	----	----	----	----	----	----	----	----	----	----	----	----	----	----	----	----

Btu/h a $\Delta t=50^\circ\text{C}$	849,71	1.081,31	1.312,91	1.544,41	1.776,02	2.007,62	2.239,12	2.470,72	2.710,42	2.942,23	3.161,73	3.381,63	3.589,83	3.790,63	3.983,84	4.169,54	4.348,44	4.519,84	4.684,74	4.900,95	5.117,15	5.333,35
-------------------------------------	--------	----------	----------	----------	----------	----------	----------	----------	----------	----------	----------	----------	----------	----------	----------	----------	----------	----------	----------	----------	----------	----------

Thermal Power linear mt. Watt a $\Delta t=50^\circ\text{C}$	248,93	316,7	384,6	452,4	520,2	588,0	655,9	723,7	793,9	861,8	926,1	990,5	1.051,5	1.110,3	1.166,9	1.221,3	1.273,7	1.323,9	1.372,2	1.435,5	1.498,8	1.561,5
---	--------	-------	-------	-------	-------	-------	-------	-------	-------	-------	-------	-------	---------	---------	---------	---------	---------	---------	---------	---------	---------	---------

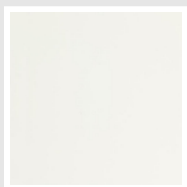
Thermal Power linear mt. Watt a $\Delta t=40^{\circ}C$	187,3	238,6	289,9	341,3	392,8	445,1	497,6	550,2	606,0	660,5	712,5	765,2	811,1	855,2	897,5	935,2	971,0	1.004,8	1.036,9	1.066,0	1.096,0	1.144,7	1.181,1
Thermal Power linear mt. Watt a $\Delta t=30^{\circ}C$	129,9	165,5	201,3	237,3	273,4	310,8	348,5	386,5	427,9	468,7	508,2	548,6	580,4	610,8	639,8	662,9	684,4	704,2	722,6	773,9	808,7	843,5	878,3
Thermal Power linear mt. Watt a $\Delta t=20^{\circ}C$	77,5	98,9	120,5	142,2	164,1	187,3	211,0	234,9	261,9	289,0	315,6	343,3	362,2	380,1	397,0	408,1	418,0	426,7	434,3	474,0	495,6	517,2	538,8
Exponent	1,274	1,270	1,267	1,263	1,259	1,248	1,238	1,228	1,210	1,192	1,175	1,157	1,163	1,170	1,177	1,196	1,216	1,236	1,256	1,209	1,208	1,207	1,206

## Data Set

Height (mm) sub>	NÂ° Elements	520	550	650	670	700	750	850	870	920	1220	1520	1820	2020	2220	2520
109	4	Watt = 129	137	162	167	174	187	212	217	229	304	378	453	503	553	627
163	6	Watt = 165	174	206	212	222	238	269	276	291	386	481	576	640	703	798
217	8	Watt = 200	212	250	258	269	288	327	335	354	469	585	700	777	854	969
271	10	Watt = 235	249	294	303	317	339	385	394	416	552	688	823	914	1004	1140
325	12	Watt = 271	286	338	349	364	390	442	453	479	635	791	947	1051	1155	1311
379	14	Watt = 306	323	382	394	412	441	500	512	541	717	894	1070	1188	1305	1482
433	16	Watt = 341	361	426	439	459	492	557	571	603	800	997	1194	1325	1456	1653
487	18	Watt = 376	398	470	485	507	543	615	630	666	883	1100	1317	1462	1607	1824
541	20	Watt = 413	437	516	532	556	595	675	691	730	969	1207	1445	1604	1762	2001
595	22	Watt = 448	474	560	577	603	646	733	750	793	1051	1310	1568	1741	1913	2172
649	24	Watt = 482	509	602	620	648	695	787	806	852	1130	1408	1686	1871	2056	2334
703	26	Watt = 515	545	644	664	693	743	842	862	911	1208	1506	1803	2001	2199	2496
757	28	Watt = 547	578	683	705	736	789	894	915	967	1283	1598	1914	2124	2334	2650
811	30	Watt = 577	611	722	744	777	833	944	966	1021	1355	1688	2021	2243	2465	2798
865	32	Watt = 607	642	758	782	817	875	992	1015	1074	1424	1774	2124	2357	2591	2941
919	34	Watt = 635	672	794	818	855	916	1038	1063	1124	1490	1856	2223	2467	2711	3078
973	36	Watt = 662	701	828	853	892	955	1083	1108	1172	1554	1936	2318	2573	2828	3210
1027	38	Watt = 688	728	861	887	927	993	1125	1152	1218	1615	2012	2409	2674	2939	3336
1081	40	Watt = 714	755	892	919	961	1029	1166	1194	1262	1674	2086	2497	2772	3046	
1135	42	Watt = 746	790	933	962	1005	1077	1220	1249	1321	1751	2182	2613	2900	3187	
1189	44	Watt = 779	824	974	1004	1049	1124	1274	1304	1379	1829	2278	2728	3028	3327	
1243	46	Watt = 812	859	1015	1047	1094	1172	1328	1359	1437	1906	2375	2843	3156		
1297	48	Watt = 845	894	1057	1089	1138	1219	1382	1414	1495	1983	2471	2958	3284		
1351	50	Watt = 878	929	1098	1132	1182	1267	1435	1469	1554	2060	2567	3074			
1405	52	Watt = 911	964	1139	1174	1227	1314	1489	1524	1612	2138	2663	3189			
1459	54	Watt = 944	999	1180	1216	1271	1362	1543	1579	1670	2215	2760				
1513	56	Watt = 977	1033	1221	1259	1315	1409	1597	1635	1728	2292	2856				
1567	58	Watt = 1010	1068	1262	1301	1359	1457	1651	1690	1787	2369	2952				
1621	60	Watt = 1043	1103	1304	1344	1404	1504	1705	1745	1845	2447	3048				

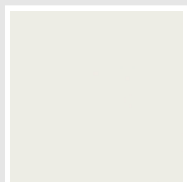
# Colors and Finishes

## STANDARD

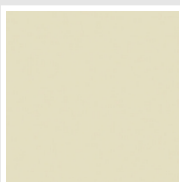


Bianco Standard  
Cod. 01

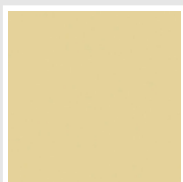
## CLASSIC



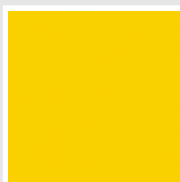
Bianco Edelweiss  
Cod. 34



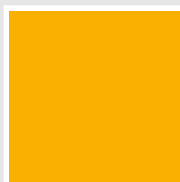
Avorio - RAL 1013  
Cod. 02



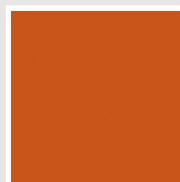
Beige Cream  
Cod. 26



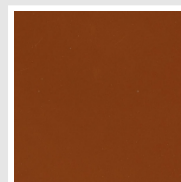
Giallo - RAL 1021  
Cod. 04



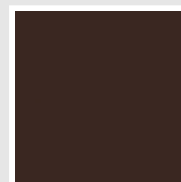
Giallo Melone - RAL  
1028  
Cod. E7



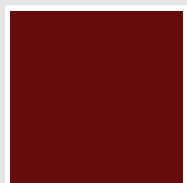
Arancio - RAL 2004  
Cod. 17



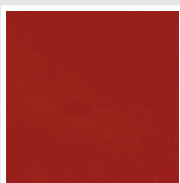
Marrone Ruggine -  
RAL 8004  
Cod. E1



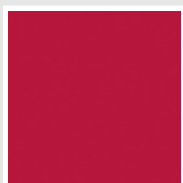
Marrone - RAL 8017  
Cod. 09



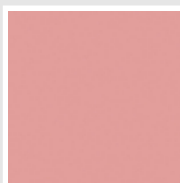
Amaranto - RAL 3003  
Cod. 06



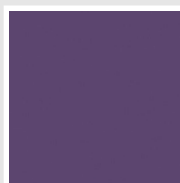
Rosso - RAL 3000  
Cod. 05



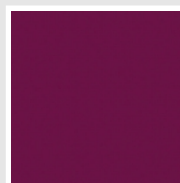
Rosso Fragola - RAL  
3018  
Cod. Y3



Rosa - RAL 3015  
Cod. R2



Lilla Bluastro - RAL  
4005  
Cod. R3



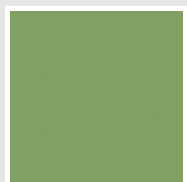
Porpora Traffico -  
RAL 4006  
Cod. R6



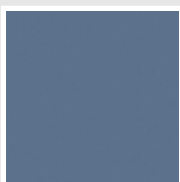
Verde Bosco - RAL  
6005  
Cod. 19



Verde Erba - RAL  
6018  
Cod. N3



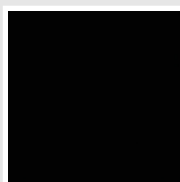
Verde Salvia - RAL  
6021  
Cod. E6



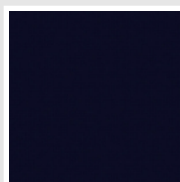
Blu Pastello - RAL  
5024  
Cod. G7



Grigio Manhattan  
Cod. 03

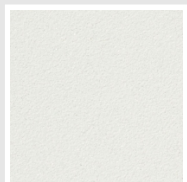


Nero - RAL 9005  
Cod. 10

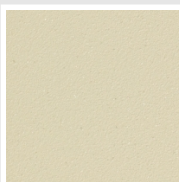


Deep Blue  
Cod. 2F

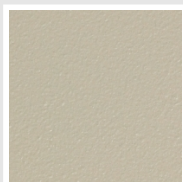
## SPECIAL



Bianco Perla  
Cod. 16



Quartz 1  
Cod. 1C



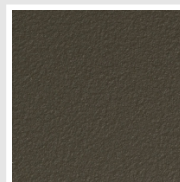
Sablé  
Cod. Y4



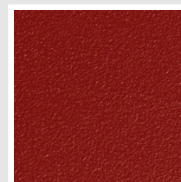
Quartz 2  
Cod. 2C



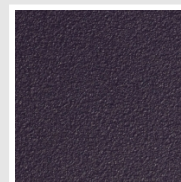
Sunstone  
Cod. 2D



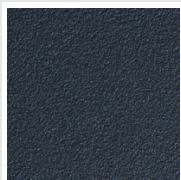
Bruno Tabacco  
Cod. 1B



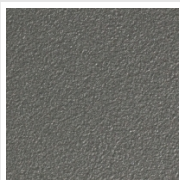
Flame Red  
Cod. 7D



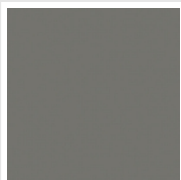
Purple Blue  
Cod. 1D



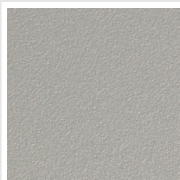
Azurite 3  
Cod. 6C



Grigio Medio  
Cod. 4D



Grigio Titanio  
Metallizzato - RAL  
9023  
Cod. L3



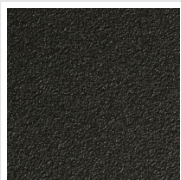
Grigio Perla  
Cod. L6



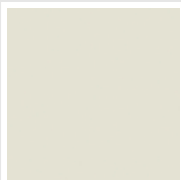
Nero Grafite  
Cod. 18



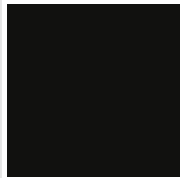
Grigio Quarzo  
Cod. 31



Nero Satinato  
Cod. 30



Bianco Opaco  
Cod. J8



Nero Opaco  
Cod. K1



Agave  
Cod. 9N



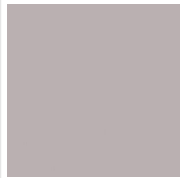
Blu Baltico  
Cod. 1P



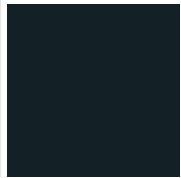
Ghiaccio  
Cod. 3P



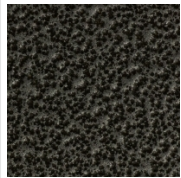
Blu Colomba Opaco  
Cod. 4P



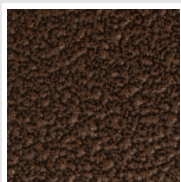
Grigio Chiaro Opaco  
Cod. 8N



Grigio Cenere - Ral  
7021  
Cod. G1



Grigio Martellato  
Cod. 32



Rame Martellato  
Cod. J4

## RAL



Other RAL Colours (following feasibility study)  
Cod. ALTRIRAL

The Colors used in this folder are not considered binding. The different technological painting processes and the materials used for the realization can not have a perfect color match with the delivered product. Irsap company reserves the right to introduce at any time whatever modifications necessary to the improvement of the product.