

Arpa18_2 Horizontal

Slightly rounded ends make the product coherent in every detail. Performance is guaranteed also for low-temperature systems, while the range of Irsap colors offers versatility and fantasy for every room in the home or office.



Arpa18 2, Horizontal, 20 elements, Hight 2020 mm, Lenght 364 mm, Graphite Black

Construction features

manifolds with a 30 mm diameter circular section
tubes made of sheet steel with an 18 mm diameter
manifold threading 1/2" Gas right
maximum working pressure 10 bar
maximum working temperature 95°C

Standard equipment

wall fixing systems with screws and anchors
1/2" blind plug with piper cover kit
1/2" air vent

Certifications



Plus



Technical data

Model	Depth (mm)	Length (mm)	Conn. C. (mm)	Weight (kg)	Capacity (lt)
520	62,0	520	470	0,54	0,23
550	62,0	550	500	0,57	0,24
650	62,0	650	600	0,66	0,28
670	62,0	670	620	0,68	0,29
700	62,0	700	650	0,71	0,30
750	62,0	750	700	0,75	0,32
850	62,0	850	800	0,84	0,36
870	62,0	870	820	0,86	0,37
920	62,0	920	870	0,91	0,39
1220	62,0	1220	1170	1,18	0,50
1520	62,0	1520	1470	1,46	0,62
1820	62,0	1820	1770	1,73	0,74
2020	62,0	2020	1970	1,92	0,82
2220	62,0	2220	2170	2,10	0,90
2520	62,0	2520	2470	2,37	1,01

Thanks to the high performance of Irsap Arpa18_2 Horizontal radiators, the ideal Δt for low temperature projects is Δt at 30°C.

For Δt different from 50°C use the formula: $Q=Q_n (\Delta t / 50)^n$

Standard equipment

- wall fixing systems with screws and anchors
- 1/2" blind plug with piper cover kit
- 1/2" air vent

Number elements	4	6	8	10	12	14	16	18	20	22	24	26	28	30	32	34	36	38	40	42	44	4	
Btu/h a $\Delta t=50^\circ\text{C}$	1.082,61	1.464,41	1.846,32	2.228,22	2.610,12	2.992,03	3.373,93	3.755,74	4.137,64	4.519,54	4.901,44	5.283,34	5.665,24	6.047,14	6.430,04	6.812,94	7.195,84	7.578,74	7.961,64	8.344,54	8.727,44	9.110,34	9.493,24

Thermal Power linear mt. Watt a $\Delta t=50^\circ\text{C}$ 317,1 429,0 540,8 652,7 764,5 876,4 988,2 1.100,11.191,01.274,61.349,71.420,71.483,61.540,31.590,91.631,01.675,21.709,41.738,81.822,31.905,71

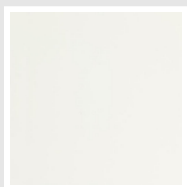
Thermal Power linear mt. Watt a $\Delta t=40^{\circ}\text{C}$	242,4	327,7	412,9	497,6	585,5	674,0	756,9	834,8	903,1	965,8	1.022,0	1.075,0	1.122,4	1.165,1	1.203,2	1.232,8	1.265,3	1.290,3	1.311,6	1.377,0	1.437,2
Thermal Power linear mt. Watt a $\Delta t=30^{\circ}\text{C}$	171,4	231,6	291,6	350,8	415,0	480,5	536,6	584,9	632,2	675,5	714,1	750,4	783,4	813,0	839,4	859,4	881,2	897,9	911,9	959,6	998,9
Thermal Power linear mt. Watt a $\Delta t=20^{\circ}\text{C}$	105,2	142,0	178,6	214,3	255,5	298,2	330,5	354,2	382,4	408,0	430,8	452,2	471,9	489,6	505,3	516,8	529,2	538,6	546,4	576,7	598,2
Exponent	1,204	1,207	1,209	1,215	1,196	1,177	1,195	1,237	1,240	1,243	1,246	1,249	1,250	1,251	1,252	1,254	1,258	1,260	1,263	1,256	1,264

Data Set

Height (mm) sub>	NÂ° Elements	520	550	650	670	700	750	850	870	920	1220	1520	1820	2020	2220	2520
109	4	Watt = 165	174	206	212	222	238	270	276	292	387	482	577	641	704	799
163	6	Watt = 223	236	279	287	300	322	365	373	395	523	652	781	866	952	1081
217	8	Watt = 281	297	352	362	379	406	460	471	498	660	822	984	1092	1201	1363
271	10	Watt = 339	359	424	437	457	490	555	568	600	796	992	1188	1318	1449	1645
325	12	Watt = 398	420	497	512	535	573	650	665	703	933	1162	1391	1544	1697	1927
379	14	Watt = 456	482	570	587	613	657	745	762	806	1069	1332	1595	1770	1946	2208
433	16	Watt = 514	544	642	662	692	741	840	860	909	1206	1502	1799	1996	2194	2490
487	18	Watt = 572	605	715	737	770	825	935	957	1012	1342	1672	2002	2222	2442	2772
541	20	Watt = 619	655	774	798	834	893	1012	1036	1096	1453	1810	2168	2406	2644	3001
595	22	Watt = 663	701	828	854	892	956	1083	1109	1173	1555	1937	2320	2575	2830	3212
649	24	Watt = 702	742	877	904	945	1012	1147	1174	1242	1647	2052	2456	2726	2996	3401
703	26	Watt = 739	781	923	952	994	1066	1208	1236	1307	1733	2159	2586	2870	3154	
757	28	Watt = 771	816	964	994	1039	1113	1261	1291	1365	1810	2255	2700	2997	3294	
811	30	Watt = 801	847	1001	1032	1078	1155	1309	1340	1417	1879	2341	2803	3111	3419	
865	32	Watt = 827	875	1034	1066	1114	1193	1352	1384	1464	1941	2418	2895	3214		
919	34	Watt = 848	897	1060	1093	1142	1223	1386	1419	1501	1990	2479	2968	3295		
973	36	Watt = 871	921	1089	1122	1173	1256	1424	1457	1541	2044	2546	3049			
1027	38	Watt = 889	940	1111	1145	1197	1282	1453	1487	1573	2085	2598				
1081	40	Watt = 904	956	1130	1165	1217	1304	1478	1513	1600	2121	2643				
1135	42	Watt = 948	1002	1184	1221	1276	1367	1549	1585	1676	2223	2770				
1189	44	Watt = 991	1048	1239	1277	1334	1429	1620	1658	1753	2325					
1243	46	Watt = 1034	1094	1293	1333	1392	1492	1691	1731	1830	2427					
1297	48	Watt = 1078	1140	1347	1389	1451	1554	1762	1803	1907	2529					
1351	50	Watt = 1121	1186	1401	1445	1509	1617	1833	1876	1984	2630					
1405	52	Watt = 1165	1232	1456	1500	1568	1680	1904	1948	2060	2732					
1459	54	Watt = 1208	1278	1510	1556	1626	1742	1975	2021	2137						
1513	56	Watt = 1251	1324	1564	1612	1685	1805	2045	2094	2214						
1567	58	Watt = 1295	1369	1618	1668	1743	1867	2116	2166	2291						
1621	60	Watt = 1338	1415	1673	1724	1801	1930	2187	2239	2367						

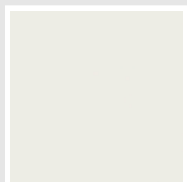
Colors and Finishes

STANDARD

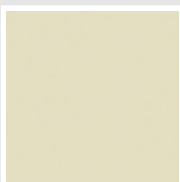


Bianco Standard
Cod. 01

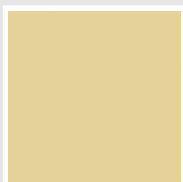
CLASSIC



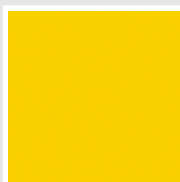
Bianco Edelweiss
Cod. 34



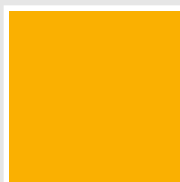
Avorio - RAL 1013
Cod. 02



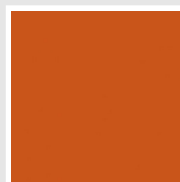
Beige Cream
Cod. 26



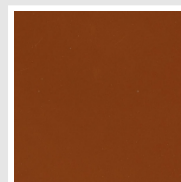
Giallo - RAL 1021
Cod. 04



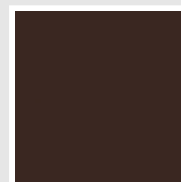
Giallo Melone - RAL
1028
Cod. E7



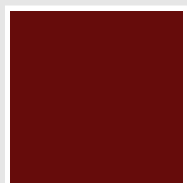
Arancio - RAL 2004
Cod. 17



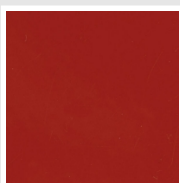
Marrone Ruggine -
RAL 8004
Cod. E1



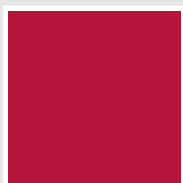
Marrone - RAL 8017
Cod. 09



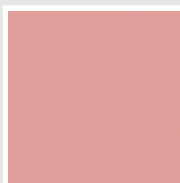
Amaranto - RAL 3003
Cod. 06



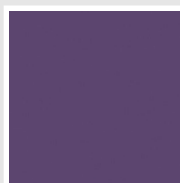
Rosso - RAL 3000
Cod. 05



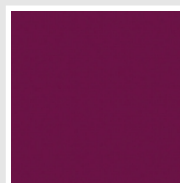
Rosso Fragola - RAL
3018
Cod. Y3



Rosa - RAL 3015
Cod. R2



Lilla Bluastro - RAL
4005
Cod. R3



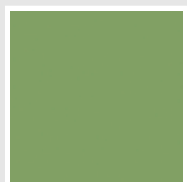
Porpora Traffico -
RAL 4006
Cod. R6



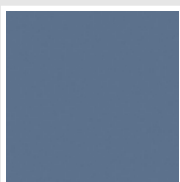
Verde Bosco - RAL
6005
Cod. 19



Verde Erba - RAL
6018
Cod. N3



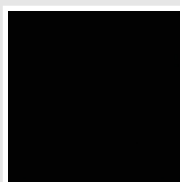
Verde Salvia - RAL
6021
Cod. E6



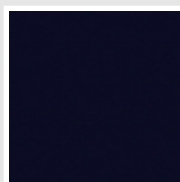
Blu Pastello - RAL
5024
Cod. G7



Grigio Manhattan
Cod. 03

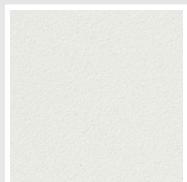


Nero - RAL 9005
Cod. 10

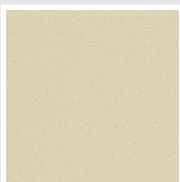


Deep Blue
Cod. 2F

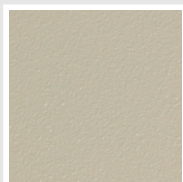
SPECIAL



Bianco Perla
Cod. 16



Quartz 1
Cod. 1C



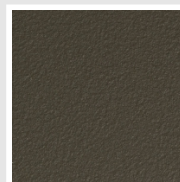
Sablé
Cod. Y4



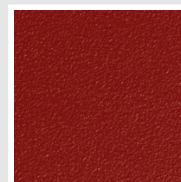
Quartz 2
Cod. 2C



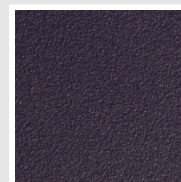
Sunstone
Cod. 2D



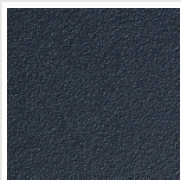
Bruno Tabacco
Cod. 1B



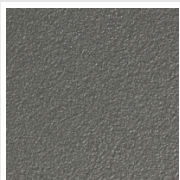
Flame Red
Cod. 7D



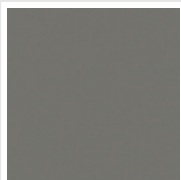
Purple Blue
Cod. 1D



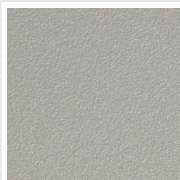
Azurite 3
Cod. 6C



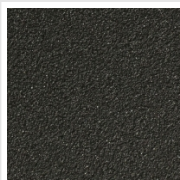
Grigio Medio
Cod. 4D



Grigio Titanio
Metallizzato - RAL
9023
Cod. L3



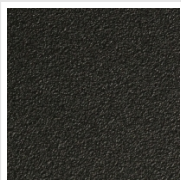
Grigio Perla
Cod. L6



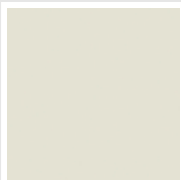
Nero Grafite
Cod. 18



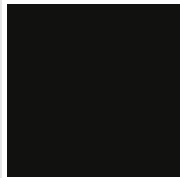
Grigio Quarzo
Cod. 31



Nero Satinato
Cod. 30



Bianco Opaco
Cod. J8



Nero Opaco
Cod. K1



Agave
Cod. 9N



Blu Baltico
Cod. 1P



Ghiaccio
Cod. 3P



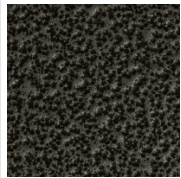
Blu Colomba Opaco
Cod. 4P



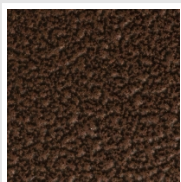
Grigio Chiaro Opaco
Cod. 8N



Grigio Cenere - Ral
7021
Cod. G1



Grigio Martellato
Cod. 32



Rame Martellato
Cod. J4

RAL



Other RAL Colours (following feasibility study)
Cod. ALTRIRAL

The Colors used in this folder are not considered binding. The different technological painting processes and the materials used for the realization can not have a perfect color match with the delivered product. Irsap company reserves the right to introduce at any time whatever modifications necessary to the improvement of the product.