

Offering the possibility to size the radiator with the highest degree of flexibility and style, the ARPA23 radiator presents a practical solution to every heating power need. A musical shape that combines personality with practicality makes it the ideal choice for small and large rooms even when low temperature systems are used.



Arpa23 Verticale, 20 elements, Hight 2020 mm, Lenght 680 mm, Bluish Lilac - RAL 4005

Construction features

- round section manifold, 30 mm diameter
- 23 mm diameter steel round pipes
- threading at the ends of the manifolds, right G 1/2"
- maximum working pressure 8 bar
- maximum working temperature 95°C

Standard equipment

- wall fixing systems with screws and anchors
- 1/2" blind plug with piper cover kit
- 1/2" air vent

Certifications



Plus



Technical data

Model	Depth (mm)	Height (mm)	Conn. C. (mm)	Weight (kg)	Capacity (lt)	$\Delta t=50^{\circ}\text{C}$ (btu/h)	$\Delta t=50^{\circ}\text{C}$ (kcal/h)	$\Delta t=50^{\circ}\text{C}$ (Watt)	$\Delta t=40^{\circ}\text{C}$ (Watt)	$\Delta t=30^{\circ}\text{C}$ (Watt)	$\Delta t=20^{\circ}\text{C}$ (Watt)	Exponent
520	50,0	520	470	0,46	0,20	89,1	22,4	26,1	19,8	13,8	8,3	1,249
550	50,0	550	500	0,48	0,20	93,5	23,6	27,4	20,7	14,5	8,7	1,251
650	50,0	650	600	0,55	0,24	107,8	27,2	31,6	23,9	16,6	10,0	1,257
670	50,0	670	620	0,56	0,24	110,9	27,9	32,5	24,6	17,1	10,3	1,258
700	50,0	700	650	0,58	0,25	115,0	29,0	33,7	25,4	17,7	10,6	1,259
750	50,0	750	700	0,62	0,27	122,1	30,8	35,8	27,0	18,8	11,3	1,262
850	50,0	850	800	0,69	0,30	136,5	34,4	40,0	30,1	20,9	12,5	1,268
870	50,0	870	820	0,70	0,31	139,2	35,1	40,8	30,7	21,3	12,8	1,269
920	50,0	920	870	0,74	0,33	146,0	36,8	42,8	32,2	22,4	13,4	1,269
1220	50,0	1220	1170	0,95	0,42	187,3	47,2	54,9	41,3	28,7	17,1	1,271
1520	50,0	1520	1470	1,16	0,52	227,6	57,4	66,7	50,2	34,8	20,8	1,273
1820	50,0	1820	1770	1,37	0,62	267,5	67,4	78,4	58,8	40,6	24,1	1,287
2020	50,0	2020	1970	1,50	0,69	293,8	74,0	86,1	64,5	44,4	26,2	1,296
2520	50,0	2520	2470	1,85	0,85	359,3	90,6	105,3	79,1	54,8	32,6	1,280

Thanks to the high performance of Irsap Arpa23 Vertical radiators, the ideal Δt for low temperature projects is Δt at 30°C .

For Δt different from 50°C use the formula: $Q=Q_n (\Delta t / 50)^n$

Standard equipment

- wall fixing systems with screws and anchors
- 1/2" blind plug with piper cover kit
- 1/2" air vent

Data Set

Length (mm) sub>	NÂ° Elements	520	550	650	670	700	750	850	870	920	1220	1520	1820	2020	2520
130	4	Watt = 104	110	126	130	135	143	160	163	171	220	267	314	344	421
198	6	Watt = 157	164	190	195	202	215	240	245	257	329	400	470	517	632
266	8	Watt = 209	219	253	260	270	286	320	326	342	439	534	627	689	842
334	10	Watt = 261	274	316	325	337	358	400	408	428	549	667	784	861	1053
402	12	Watt = 313	329	379	390	404	430	480	490	514	659	800	941	1033	1264
470	14	Watt = 365	384	442	455	472	501	560	571	599	769	934	1098	1205	1474
538	16	Watt = 418	438	506	520	539	573	640	653	685	878	1067	1254	1378	1685
606	18	Watt = 470	493	569	585	607	644	720	734	770	988	1201	1411	1550	1895
674	20	Watt = 522	548	632	650	674	716	800	816	856	1098	1334	1568	1722	2106
742	22	Watt = 574	603	695	715	741	788	880	898	942	1208	1467	1725	1894	2317
810	24	Watt = 626	658	758	780	809	859	960	979	1027	1318	1601	1882	2066	2527
878	26	Watt = 679	712	822	845	876	931	1040	1061	1113	1427	1734	2038	2239	2738
946	28	Watt = 731	767	885	910	944	1002	1120	1142	1198	1537	1868	2195	2411	2948
1014	30	Watt = 783	822	948	975	1011	1074	1200	1224	1284	1647	2001	2352	2583	3159
1082	32	Watt = 835	877	1011	1040	1078	1146	1280	1306	1370	1757	2134	2509	2755	
1150	34	Watt = 887	932	1074	1105	1146	1217	1360	1387	1455	1867	2268	2666	2927	
1218	36	Watt = 940	986	1138	1170	1213	1289	1440	1469	1541	1976	2401	2822	3100	
1286	38	Watt = 992	1041	1201	1235	1281	1360	1520	1550	1626	2086	2535	2979	3272	
1354	40	Watt = 1044	1096	1264	1300	1348	1432	1600	1632	1712	2196	2668	3136		

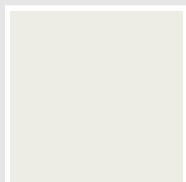
Colors and Finishes

STANDARD

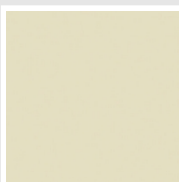


Bianco Standard
Cod. 01

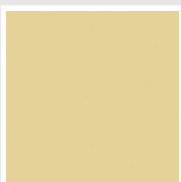
CLASSIC



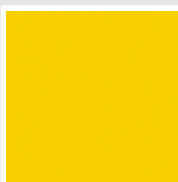
Bianco Edelweiss
Cod. 34



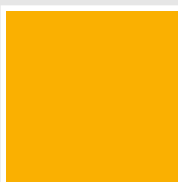
Avorio - RAL 1013
Cod. 02



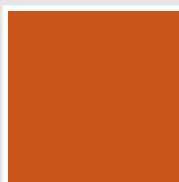
Beige Cream
Cod. 26



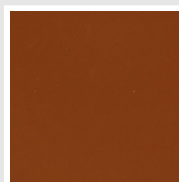
Giallo - RAL 1021
Cod. 04



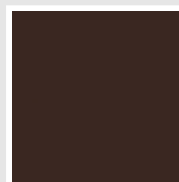
Giallo Melone - RAL
1028
Cod. E7



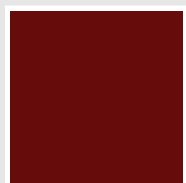
Arancio - RAL 2004
Cod. 17



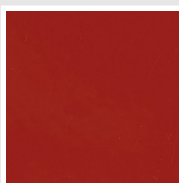
Marrone Ruggine -
RAL 8004
Cod. E1



Marrone - RAL 8017
Cod. 09



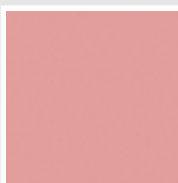
Amaranto - RAL 3003
Cod. 06



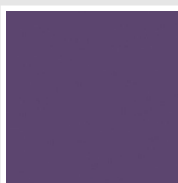
Rosso - RAL 3000
Cod. 05



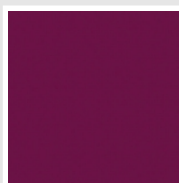
Rosso Fragola - RAL
3018
Cod. Y3



Rosa - RAL 3015
Cod. R2



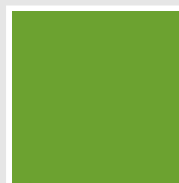
Lilla Bluastro - RAL
4005
Cod. R3



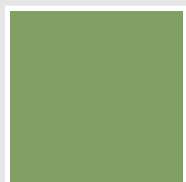
Porpora Traffico -
RAL 4006
Cod. R6



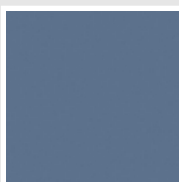
Verde Bosco - RAL
6005
Cod. 19



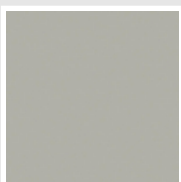
Verde Erba - RAL
6018
Cod. N3



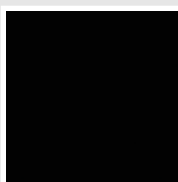
Verde Salvia - RAL
6021
Cod. E6



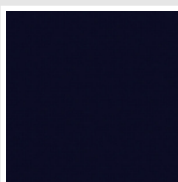
Blu Pastello - RAL
5024
Cod. G7



Grigio Manhattan
Cod. 03

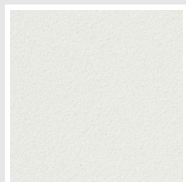


Nero - RAL 9005
Cod. 10

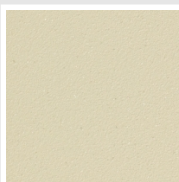


Deep Blue
Cod. 2F

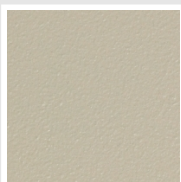
SPECIAL



Bianco Perla
Cod. 16



Quartz 1
Cod. 1C



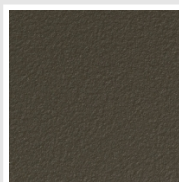
Sablé
Cod. Y4



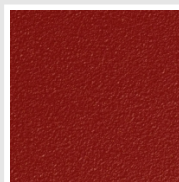
Quartz 2
Cod. 2C



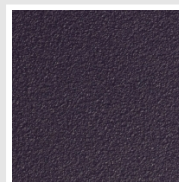
Sunstone
Cod. 2D



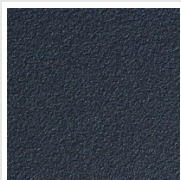
Bruno Tabacco
Cod. 1B



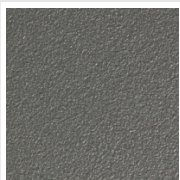
Flame Red
Cod. 7D



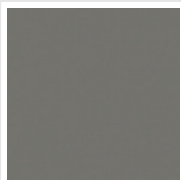
Purple Blue
Cod. 1D



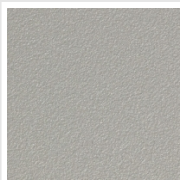
Azurite 3
Cod. 6C



Grigio Medio
Cod. 4D



Grigio Titanio
Metallizzato - RAL
9023
Cod. L3



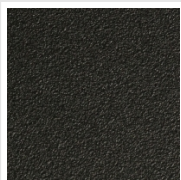
Grigio Perla
Cod. L6



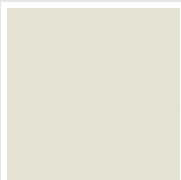
Nero Grafite
Cod. 18



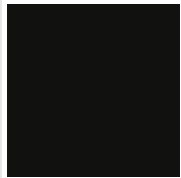
Grigio Quarzo
Cod. 31



Nero Satinato
Cod. 30



Bianco Opaco
Cod. J8



Nero Opaco
Cod. K1



Agave
Cod. 9N



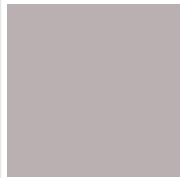
Blu Baltico
Cod. 1P



Ghiaccio
Cod. 3P



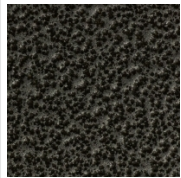
Blu Colomba Opaco
Cod. 4P



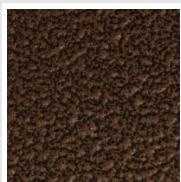
Grigio Chiaro Opaco
Cod. 8N



Grigio Cenere - Ral
7021
Cod. G1



Grigio Martellato
Cod. 32



Rame Martellato
Cod. J4

RAL



Other RAL Colours (following feasibility study)
Cod. ALTRIRAL

The Colors used in this folder are not considered binding. The different technological painting processes and the materials used for the realization can not have a perfect color match with the delivered product. Irsap company reserves the right to introduce at any time whatever modifications necessary to the improvement of the product.