

Arpa23 Horizontal

Offering the possibility to size the radiator with the highest degree of flexibility and style, the ARPA23 radiator presents a practical solution to every heating power need. A musical shape that combines personality with practicality makes it the ideal choice for small and large rooms even when low temperature systems are used.



Arpa23 Orizzontale, 12 elements, Height 408 mm, Length 1520 mm, Brown Rust - RAL 8004

Construction features

- round section manifold, 30 mm diameter
- 23 mm diameter steel round pipes
- threading at the ends of the manifolds, right G 1/2"
- maximum working pressure 8 bar
- maximum working temperature 95°C

Standard equipment

- wall fixing systems with screws and anchors
- 1/2" blind plug with piper cover kit
- 1/2" air vent

Certifications



Plus



Technical data

Model	Depth (mm)	Length (mm)	Conn. C. (mm)	Weight (kg)	Capacity (lt)
520	50,0	520	470	0,46	0,20
550	50,0	550	500	0,48	0,20
650	50,0	650	600	0,55	0,24
670	50,0	670	620	0,56	0,24
700	50,0	700	650	0,58	0,25
750	50,0	750	700	0,62	0,27
850	50,0	850	800	0,69	0,30
870	50,0	870	820	0,70	0,31
920	50,0	920	870	0,74	0,33
1220	50,0	1220	1170	0,95	0,42
1520	50,0	1520	1470	1,16	0,52
1820	50,0	1820	1770	1,37	0,62
2020	50,0	2020	1970	1,50	0,69
2520	50,0	2520	2470	1,85	0,85

Thanks to the high performance of Irsap Arpa23 Horizontal radiators, the ideal Δt for low temperature projects is Δt at 30°C.

For Δt different from 50°C use the formula: $Q=Q_n (\Delta t / 50)^n$

Standard equipment

- wall fixing systems with screws and anchors
- 1/2" blind plug with piper cover kit
- 1/2" air vent

Number elements	4	6	8	10	12	14	16	18	20	22	24	26	28	30	32	34	36	38	40
Btu/h a $\Delta t=50^\circ\text{C}$	617,3	946,7	1.272,7	1.594,7	1.910,8	2.221,1	2.525,7	2.823,7	3.115,3	3.400,0	3.678,6	3.950,3	4.215,6	4.474,0	4.726,3	4.972,1	5.211,5	5.444,3	5.671,3
Thermal Power linear mt. Watt a $\Delta t=50^\circ\text{C}$	180,8	277,3	372,8	467,1	559,7	650,6	739,8	827,1	912,5	995,9	1.077,5	1.157,1	1.234,8	1.310,5	1.384,4	1.456,4	1.526,5	1.594,7	1.661,2
Thermal Power linear mt. Watt a $\Delta t=40^\circ\text{C}$	137,4	210,9	283,7	355,7	426,6	497,1	566,5	634,9	700,2	764,0	826,2	885,5	943,0	999,1	1.063,0	1.119,2	1.173,9	1.227,4	1.279,5

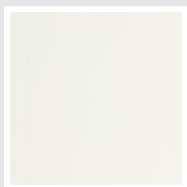
Thermal Power linear mt. Watt a $\Delta t=30^{\circ}\text{C}$	96,4	148,2	199,5	250,3	300,6	351,4	401,6	451,5	497,6	542,8	586,7	627,2	666,2	704,2	756,1	797,1	836,7	875,9	913,8
Thermal Power linear mt. Watt a $\Delta t=20^{\circ}\text{C}$	58,5	90,1	121,4	152,6	183,5	215,5	247,3	279,3	307,5	335,3	362,1	385,7	408,2	430,1	467,8	494,0	519,2	544,4	568,6
Exponent	1,231	1,227	1,224	1,221	1,217	1,206	1,196	1,185	1,187	1,188	1,190	1,199	1,208	1,216	1,184	1,180	1,177	1,173	1,170

Data Set

Height (mm) sub>	NÂ° Elements	520	550	650	670	700	750	850	870	920	1220	1520	1820	2020	2520
130	4	Watt = 94	99	118	121	127	136	154	157	166	221	275	329	365	456
198	6	Watt = 144	153	180	186	194	208	236	241	255	338	421	505	560	699
266	8	Watt = 194	205	242	250	261	280	317	324	343	455	567	678	753	939
334	10	Watt = 243	257	304	313	327	350	397	406	430	570	710	850	944	1177
402	12	Watt = 291	308	364	375	392	420	476	487	515	683	851	1019	1131	1410
470	14	Watt = 338	358	423	436	455	488	553	566	599	794	989	1184	1314	1640
538	16	Watt = 385	407	481	496	518	555	629	644	681	903	1124	1346	1494	1864
606	18	Watt = 430	455	538	554	579	620	703	720	761	1009	1257	1505	1671	2084
674	20	Watt = 474	502	593	611	639	684	776	794	840	1113	1387	1661	1843	2300
742	22	Watt = 518	548	647	667	697	747	847	866	916	1215	1514	1813	2012	2510
810	24	Watt = 560	593	700	722	754	808	916	937	991	1315	1638	1961	2177	2715
878	26	Watt = 602	636	752	775	810	868	984	1007	1065	1412	1759	2106	2337	2916
946	28	Watt = 642	679	803	827	864	926	1050	1074	1136	1506	1877	2247	2494	3112
1014	30	Watt = 681	721	852	878	917	983	1114	1140	1206	1599	1992	2385	2647	3302
1082	32	Watt = 720	761	900	928	969	1038	1177	1204	1274	1689	2104	2520	2796	
1150	34	Watt = 757	801	947	976	1019	1092	1238	1267	1340	1777	2214	2651	2942	
1218	36	Watt = 794	840	992	1023	1069	1145	1298	1328	1404	1862	2320	2778	3084	
1286	38	Watt = 829	877	1037	1068	1116	1196	1355	1387	1467	1946	2424	2902	3221	
1354	40	Watt = 864	914	1080	1113	1163	1246	1412	1445	1528	2027	2525	3023		

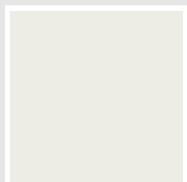
Colors and Finishes

STANDARD

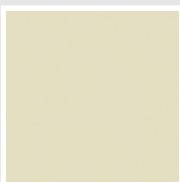


Bianco Standard
Cod. 01

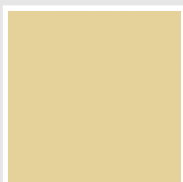
CLASSIC



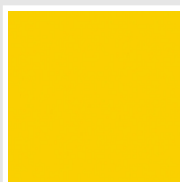
Bianco Edelweiss
Cod. 34



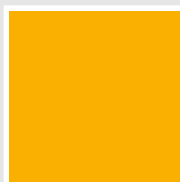
Avorio - RAL 1013
Cod. 02



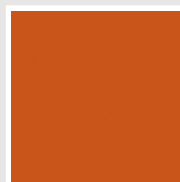
Beige Cream
Cod. 26



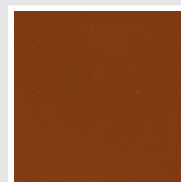
Giallo - RAL 1021
Cod. 04



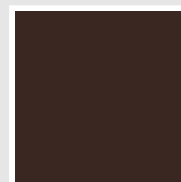
Giallo Melone - RAL
1028
Cod. E7



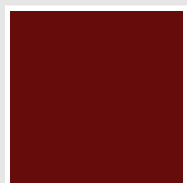
Arancio - RAL 2004
Cod. 17



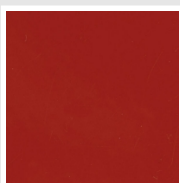
Marrone Ruggine -
RAL 8004
Cod. E1



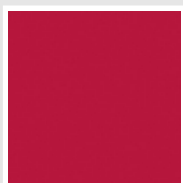
Marrone - RAL 8017
Cod. 09



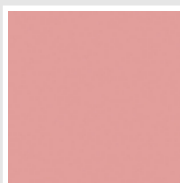
Amaranto - RAL 3003
Cod. 06



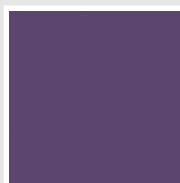
Rosso - RAL 3000
Cod. 05



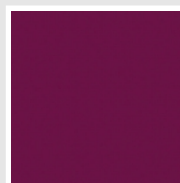
Rosso Fragola - RAL
3018
Cod. Y3



Rosa - RAL 3015
Cod. R2



Lilla Bluastro - RAL
4005
Cod. R3



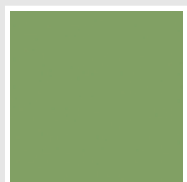
Porpora Traffico -
RAL 4006
Cod. R6



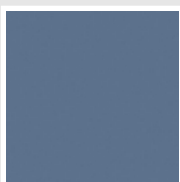
Verde Bosco - RAL
6005
Cod. 19



Verde Erba - RAL
6018
Cod. N3



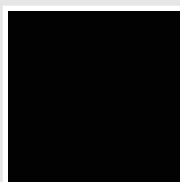
Verde Salvia - RAL
6021
Cod. E6



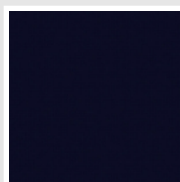
Blu Pastello - RAL
5024
Cod. G7



Grigio Manhattan
Cod. 03

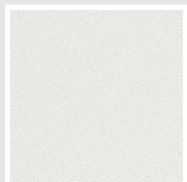


Nero - RAL 9005
Cod. 10

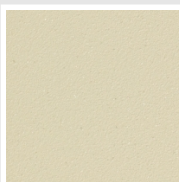


Deep Blue
Cod. 2F

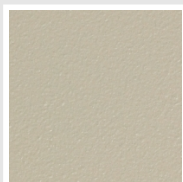
SPECIAL



Bianco Perla
Cod. 16



Quartz 1
Cod. 1C



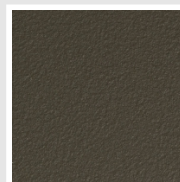
Sablé
Cod. Y4



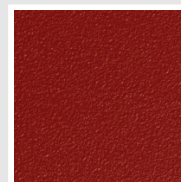
Quartz 2
Cod. 2C



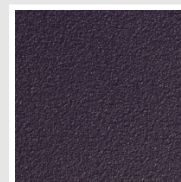
Sunstone
Cod. 2D



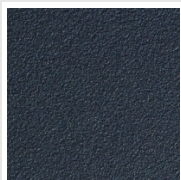
Bruno Tabacco
Cod. 1B



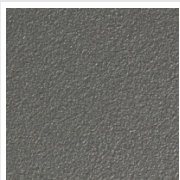
Flame Red
Cod. 7D



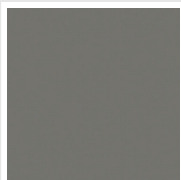
Purple Blue
Cod. 1D



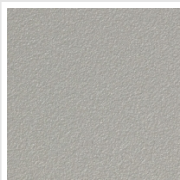
Azurite 3
Cod. 6C



Grigio Medio
Cod. 4D



Grigio Titanio
Metallizzato - RAL
9023
Cod. L3



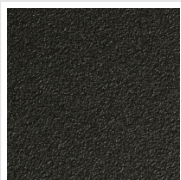
Grigio Perla
Cod. L6



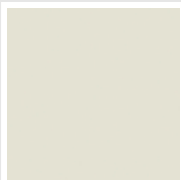
Nero Grafite
Cod. 18



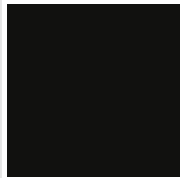
Grigio Quarzo
Cod. 31



Nero Satinato
Cod. 30



Bianco Opaco
Cod. J8



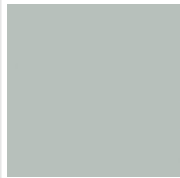
Nero Opaco
Cod. K1



Agave
Cod. 9N



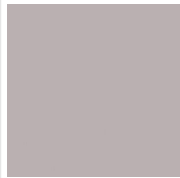
Blu Baltico
Cod. 1P



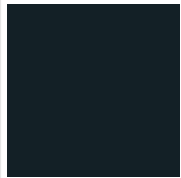
Ghiaccio
Cod. 3P



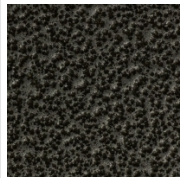
Blu Colomba Opaco
Cod. 4P



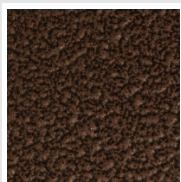
Grigio Chiaro Opaco
Cod. 8N



Grigio Cenere - Ral
7021
Cod. G1



Grigio Martellato
Cod. 32



Rame Martellato
Cod. J4

RAL



Other RAL Colours (following feasibility study)
Cod. ALTRIRAL

The Colors used in this folder are not considered binding. The different technological painting processes and the materials used for the realization can not have a perfect color match with the delivered product. Irsap company reserves the right to introduce at any time whatever modifications necessary to the improvement of the product.