

Offering the possibility to size the radiator with the highest degree of flexibility and style, the ARPA23 radiator presents a practical solution to every heating power need. A musical shape that combines personality with practicality makes it the ideal choice for small and large rooms even when low temperature systems are used.



Arpa23 2 Verticale, 18 elements, Hight 2020 mm, Lenght 612 mm, Claret - RAL 3003

Construction features

- round section manifold, 30 mm diameter
- 23 mm diameter steel round pipes
- threading at the ends of the manifolds, right G 1/2"
- maximum working pressure 8 bar
- maximum working temperature 95°C

Standard equipment

- wall fixing systems with screws and anchors
- 1/2" blind plug with piper cover kit
- 1/2" air vent

Certifications



Plus



Technical data

Model	Depth (mm)	Height (mm)	Conn. C. (mm)	Weight (kg)	Capacity (lt)	Δt=50°C (btu/h)	Δt=50°C (kcal/h)	Δt=50°C (Watt)	Δt=40°C (Watt)	Δt=30°C (Watt)	Δt=20°C (Watt)	Exponent
520	70,0	520	470	0,80	0,36	137,2	34,6	40,2	30,2	20,9	12,4	1,280
550	70,0	550	500	0,85	0,38	143,3	36,1	42,0	31,6	21,8	13,0	1,281
650	70,0	650	600	1,00	0,45	162,8	41,0	47,7	35,8	24,7	14,7	1,285
670	70,0	670	620	1,03	0,46	166,5	42,0	48,8	36,6	25,3	15,0	1,286
700	70,0	700	650	1,08	0,48	172,3	43,4	50,5	37,9	26,2	15,5	1,287
750	70,0	750	700	1,15	0,52	181,9	45,8	53,3	40,0	27,6	16,4	1,289
850	70,0	850	800	1,31	0,59	201,3	50,7	59,0	44,2	30,5	18,0	1,293
870	70,0	870	820	1,33	0,54	205,1	51,7	60,1	45,0	31,0	18,4	1,294
920	70,0	920	870	1,38	0,63	214,6	54,1	62,9	47,1	32,4	19,2	1,297
1220	70,0	1220	1170	1,81	0,82	273,6	69,0	80,2	59,8	40,9	24,0	1,317
1520	70,0	1520	1470	2,20	1,04	335,4	84,5	98,3	72,9	49,6	28,9	1,337
1820	70,0	1820	1770	2,63	1,25	400,2	100,9	117,3	87,3	59,7	34,9	1,322
2020	70,0	2020	1970	2,89	1,34	446,3	112,5	130,8	97,6	66,9	39,3	1,312
2520	70,0	2520	2470	3,61	1,67	570,5	143,8	167,2	123,0	82,8	47,5	1,375

Thanks to the high performance of Irsap Arpa23_2 Vertical radiators, the ideal Δt for low temperature projects is Δt at 30°C.

For Δt different from 50°C use the formula: $Q=Q_n (\Delta t / 50)^n$

Standard equipment

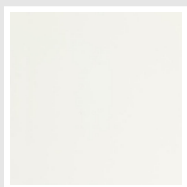
- wall fixing systems with screws and anchors
- 1/2" blind plug with piper cover kit
- 1/2" air vent

Data Set

Length (mm) sub>	NÂ° Elements	520	550	650	670	700	750	850	870	920	1220	1520	1820	2020	2520
130	4	Watt = 161	168	191	195	202	213	236	240	252	321	393	469	523	669
198	6	Watt = 241	252	286	293	303	320	354	361	377	481	590	704	785	1003
266	8	Watt = 322	336	382	390	404	426	472	481	503	642	786	938	1046	1338
334	10	Watt = 402	420	477	488	505	533	590	601	629	802	983	1173	1308	1672
402	12	Watt = 482	504	572	586	606	640	708	721	755	962	1180	1408	1570	2006
470	14	Watt = 563	588	668	683	707	746	826	841	881	1123	1376	1642	1831	2341
538	16	Watt = 643	672	763	781	808	853	944	962	1006	1283	1573	1877	2093	2675
606	18	Watt = 724	756	859	878	909	959	1062	1082	1132	1444	1769	2111	2354	3010
674	20	Watt = 804	840	954	976	1010	1066	1180	1202	1258	1604	1966	2346	2616	3344
742	22	Watt = 884	924	1049	1074	1111	1173	1298	1322	1384	1764	2163	2581	2878	
810	24	Watt = 965	1008	1145	1171	1212	1279	1416	1442	1510	1925	2359	2815	3139	
878	26	Watt = 1045	1092	1240	1269	1313	1386	1534	1563	1635	2085	2556	3050		
946	28	Watt = 1126	1176	1336	1366	1414	1492	1652	1683	1761	2246	2752	3284		
1014	30	Watt = 1206	1260	1431	1464	1515	1599	1770	1803	1887	2406	2949			
1082	32	Watt = 1286	1344	1526	1562	1616	1706	1888	1923	2013	2566	3146			
1150	34	Watt = 1367	1428	1622	1659	1717	1812	2006	2043	2139	2727	3342			
1218	36	Watt = 1447	1512	1717	1757	1818	1919	2124	2164	2264	2887				
1286	38	Watt = 1528	1596	1813	1854	1919	2025	2242	2284	2390	3048				
1354	40	Watt = 1608	1680	1908	1952	2020	2132	2360	2404	2516	3208				

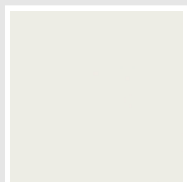
Colors and Finishes

STANDARD

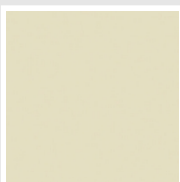


Bianco Standard
Cod. 01

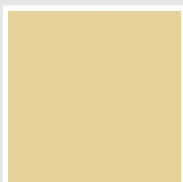
CLASSIC



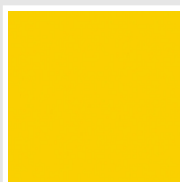
Bianco Edelweiss
Cod. 34



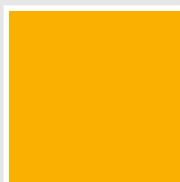
Avorio - RAL 1013
Cod. 02



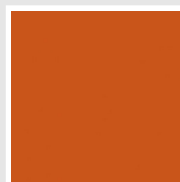
Beige Cream
Cod. 26



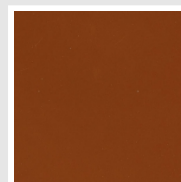
Giallo - RAL 1021
Cod. 04



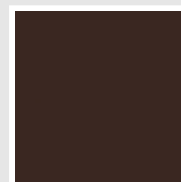
Giallo Melone - RAL
1028
Cod. E7



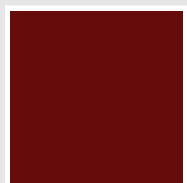
Arancio - RAL 2004
Cod. 17



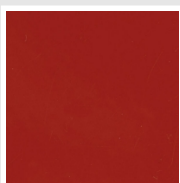
Marrone Ruggine -
RAL 8004
Cod. E1



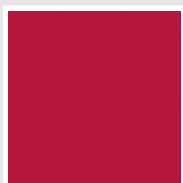
Marrone - RAL 8017
Cod. 09



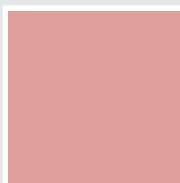
Amaranto - RAL 3003
Cod. 06



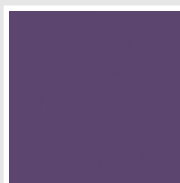
Rosso - RAL 3000
Cod. 05



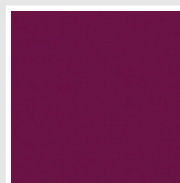
Rosso Fragola - RAL
3018
Cod. Y3



Rosa - RAL 3015
Cod. R2



Lilla Bluastro - RAL
4005
Cod. R3



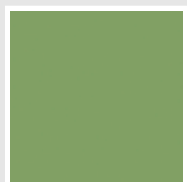
Porpora Traffico -
RAL 4006
Cod. R6



Verde Bosco - RAL
6005
Cod. 19



Verde Erba - RAL
6018
Cod. N3



Verde Salvia - RAL
6021
Cod. E6



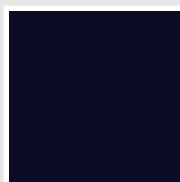
Blu Pastello - RAL
5024
Cod. G7



Grigio Manhattan
Cod. 03

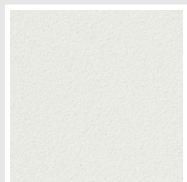


Nero - RAL 9005
Cod. 10

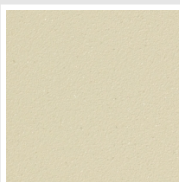


Deep Blue
Cod. 2F

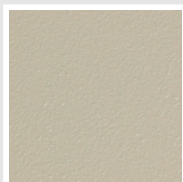
SPECIAL



Bianco Perla
Cod. 16



Quartz 1
Cod. 1C



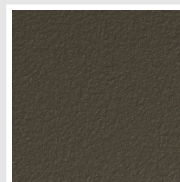
Sablé
Cod. Y4



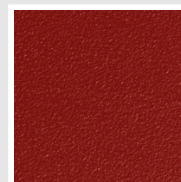
Quartz 2
Cod. 2C



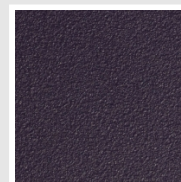
Sunstone
Cod. 2D



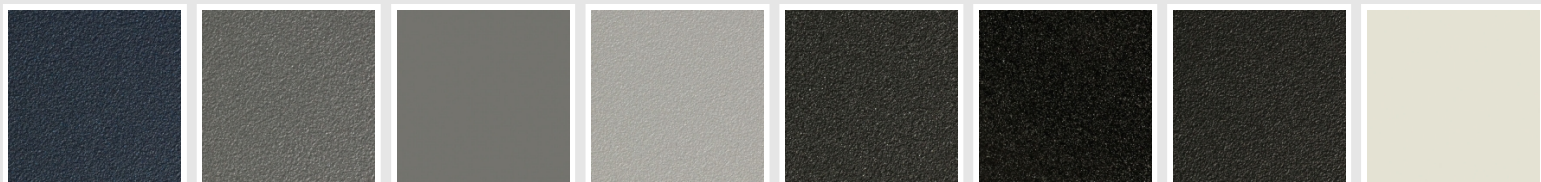
Bruno Tabacco
Cod. 1B



Flame Red
Cod. 7D



Purple Blue
Cod. 1D



Azurite 3
Cod. 6C

Grigio Medio
Cod. 4D

Grigio Titanio
Metallizzato - RAL
9023
Cod. L3

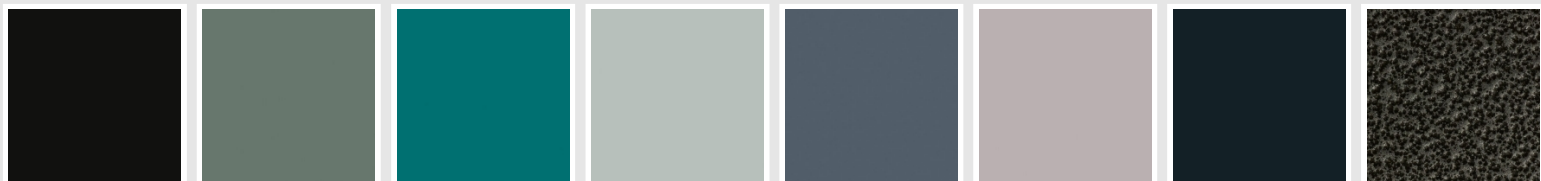
Grigio Perla
Cod. L6

Nero Grafite
Cod. 18

Grigio Quarzo
Cod. 31

Nero Satinato
Cod. 30

Bianco Opaco
Cod. J8



Nero Opaco
Cod. K1

Agave
Cod. 9N

Blu Baltico
Cod. 1P

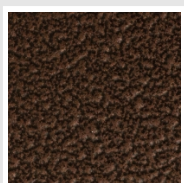
Ghiaccio
Cod. 3P

Blu Colomba Opaco
Cod. 4P

Grigio Chiaro Opaco
Cod. 8N

Grigio Cenere - Ral
7021
Cod. G1

Grigio Martellato
Cod. 32



Rame Martellato
Cod. J4

RAL



Other RAL Colours (following feasibility study)
Cod. ALTRIRAL

The Colors used in this folder are not considered binding. The different technological painting processes and the materials used for the realization can not have a perfect color match with the delivered product. Irsap company reserves the right to introduce at any time whatever modifications necessary to the improvement of the product.